



4-2-2016

Inauguration Program

Illinois Wesleyan University

Follow this and additional works at: https://digitalcommons.iwu.edu/jensen_inauguration



Part of the [Higher Education Commons](#)

Recommended Citation

Illinois Wesleyan University, "Inauguration Program" (2016). *Inauguration of Eric R. Jensen*. 3.

https://digitalcommons.iwu.edu/jensen_inauguration/3

This Book is protected by copyright and/or related rights. It has been brought to you by Digital Commons @ IWU with permission from the rights-holder(s). You are free to use this material in any way that is permitted by the copyright and related rights legislation that applies to your use. For other uses you need to obtain permission from the rights-holder(s) directly, unless additional rights are indicated by a Creative Commons license in the record and/ or on the work itself. This material has been accepted for inclusion by faculty at Illinois Wesleyan University. For more information, please contact digitalcommons@iwu.edu.

©Copyright is owned by the author of this document.

THE *Inauguration*
OF ERIC R. JENSEN
the NINETEENTH PRESIDENT of
ILLINOIS WESLEYAN UNIVERSITY

April 2, 2016

PERFORMANCE ARENA
AT THE SHIRK CENTER FOR ATHLETICS AND RECREATION





Knowledge and Wisdom

Illinois Wesleyan was founded in 1850 by 30 civic and Methodist Church leaders. During its first year, preparatory classes were taught; collegiate studies began in 1851.

Today, the University is an independent, residential liberal arts university, and exclusively undergraduate. Illinois Wesleyan enrolls approximately 1,900 students from 33 states and 24 countries. A highly selective institution, Wesleyan offers 81 majors, minors and programs in a unique curriculum that combines the liberal arts and sciences with professional schools of art, music, theatre and nursing.

Illinois Wesleyan has long had a commitment to diversity and inclusion. The Board of Trustees opened the University's enrollment to African Americans in 1867, and in 1880, Gus A. Hill became the institution's first African American graduate. The University's first female student, Hannah I. Shur, earned her degree in 1872. Illinois Wesleyan's first international students, Y. Osawa and K. Tanaka, arrived from Japan in 1889.

Another hallmark of the Illinois Wesleyan experience is the way that its faculty engage students inside and outside of the classroom. This tradition of faculty collaboration and engagement dates back to the institution's earliest days when Civil War veteran, geologist, and explorer John Wesley Powell engaged his students in exploration and fieldwork in the Rocky Mountain region. Powell later went on to serve as the second director of the U.S. Geological Survey and the first director of the Bureau of Ethnology at the Smithsonian Institution. Today the Illinois Wesleyan faculty engage their students in a wide range of scholarly, artistic and creative activity, much of which is on display at the university's annual John Wesley Powell Student Research Conference, now in its 27th year.

Presidential History



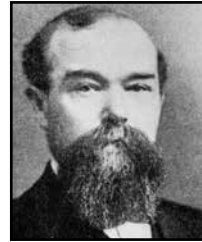
Clinton W. Sears
1855-1856



Oliver Spencer Munsell
1857-1873



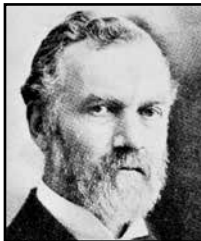
Samuel J. Fallows
1873-1875



William H. H. Adams
1875-1888



William H. Wilder
1888-1898



Edgar M. Smith
1898-1905



Frances G. Barnes
1905-1908



Theodore Kemp
1908-1922



William J. Davidson
1922-1932



Henry W. McPherson
1932-1937



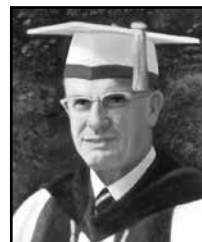
Wiley G. Brooks
1937-1939



William E. Shaw
1939-1947



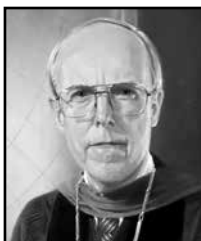
Merril J. Holmes
1947-1958



Lloyd M. Bertholf
1958-1968



Robert S. Eckley
1968-1986



Wayne Anderson
1986-1988



Minor Myers jr.
1989-2003



Richard F. Wilson
2004-2015



Eric R. Jensen
2015-



About Eric R. Jensen, Ph.D.

Prior to his selection as the 19th president of Illinois Wesleyan, Eric Jensen served as provost and chief academic officer of Hamline University in Saint Paul, Minnesota from 2012–2015. As Hamline provost, he oversaw undergraduate and graduate programming, academic advising, student affairs, intercollegiate athletics, the libraries, the international and diversity programs, and had significant budgetary responsibility, working closely with the chief financial officer in developing the university’s overall budget.

In 1982, President Jensen began his academic career as a professor of economics and public policy at the College of William and Mary in Williamsburg, Virginia. From 2004 to 2012, he was director of the College’s Thomas Jefferson Program in Public Policy.

An active scholar and researcher, Professor Jensen has published numerous articles on the economics of demographic change and has worked in a number of Asian countries as a Senior Fellow for the Honolulu based East-West Center and as a Council on Foreign Relations International Affairs Fellow based in Washington, D.C. He has also been a Visiting Scholar in Economics at the University of Indonesia and has worked on World Bank and United States Agency for International Development (USAID) projects in South and Southeast Asia. The Rockefeller Foundation, the Andrew Mellon Foundation and the Freeman Foundation have also supported Jensen’s scholarly activity.

President Jensen earned both his Ph.D. and master’s degrees in economics from the University of Michigan, and his undergraduate degree in economics from the University of Miami.

The president hails from Homewood, Illinois and is married to Elizabeth, a former middle school science teacher, who grew up outside of Williamsburg, Virginia. Elizabeth Jensen earned her bachelor’s degree from James Madison University and a master’s from the University of Oregon. The Jensens have two grown children, Joseph who resides in Seattle and Jessica in Saint Paul, and the family dog Calvin.

Inauguration Steering Committee

Honorary Co-Chairs

George Vinyard '71	Chair, Board of Trustees
Jean Baird '80	Secretary, Board of Trustees and Chair of Presidential Search Committee

Committee Members

R. Kent Cook, Co-Chair	Professor of Music
Rebecca A. Roesner, Co-Chair	Chair and Professor of Chemistry
Mary T. Anderson	Physical Plant Operations Coordinator
James Blumberg	Director of Physical Plant
Anna M. Bromaghim '07	Administrative Assistant, Campus Events and Conference Services
Karla C. Carney-Hall	Vice President of Student Affairs and Dean of Students
Marissa N. Cozzi '17	Economics Major, Student Senate Vice President
Patricia L. Henderson	Senior Administrative Assistant II, Office of the Provost and Dean of the Faculty
Christina L. Isabelli	Chair and Professor of Hispanic Studies
Daniel E. Jameson '80	Board of Trustees
Paxton O. Johnson '18	English–Writing Major, Student Senate University Events Commissioner
Elly L. Jones '91	Board of Trustees and President of the Alumni Association
Matthew O. Kurz	Vice President for Communications
Kathy Larey Lewton '70	Board of Trustees
Sue Milligan	Office Coordinator II, Office of the President
Molly L. Munson-Dryer	Executive Assistant to the President
Abigail S. Reel '04	Assistant Director for Career Development
Ronald L. Ruecker '66	Board of Trustees
Steve Seibring '81	Associate Vice President for Gift Planning
Adam L. Woodis	Visiting Assistant Professor, Department of German, Russian and Asian Studies

*President Jensen, on behalf of the University,
thanks the entire inaugural committee for their hard work,
and offers special thanks to Abigail S. Reel '04 for her contributions to the celebratory decor.*

Processional Order

Processional Marshals

Frank Boyd (Head Marshal)	Associate Provost and Title IX Coordinator
Sue Anderson	Outreach Librarian and Professor, Library
Meghan Burke	Associate Professor of Sociology
Cristina Cervantes '16	International Studies and Business double major
Zahia Drici	Professor and Chair of Mathematics
Lynda Duke	Associate Dean of Curricular and Faculty Development
Will Jaeckle	Associate Professor of Biology
Nancy Loitz	Professor of Theatre Arts
Manori Perera	Assistant Professor of Chemistry

Mace Bearer

Linda French Professor of Physics

The Mace is made of bronze and walnut, with the names of each of the University's presidents engraved on its bronze base. The bronze signifies power and endurance and the walnut staff, made of wood from the first campus building, Old North Hall, symbolizes organic strength. Atop the staff is a bronze cupola that represents Old North's bell tower.

Platform Party

George A. Vinyard '71	Chair, Board of Trustees
Jean M. Baird '80	Secretary, Board of Trustees and Chair of Presidential Search Committee
Eric R. Jensen	President of the University
Lane Bennett '18	President of Student Senate
R. Kent Cook	Professor of Music and Co-Chair of the Inaugural Steering Committee
Joanne Diaz	Associate Professor of English
Linda French	Professor of Physics
Jonathan D. Green	Provost and Dean of the Faculty
Eric Gordon	2015 Max Starkey Service Award recipient
Vaughn Hoffman	Board of Trustees and Senior Minister Wesley United Methodist Church
Deon Hornsby '97	Board of Trustees
Elly L. Jones '91	Board of Trustees and President of the Alumni Association
Jamie-Rose Guarrine '00	Vocalist and Assistant Professor of Voice, UMass Amherst
Michael Theune	Professor of English
Richard F. Wilson	President Emeritus
Elyse Nelson Winger	University Chaplain
Michael B. Young	Robert W. Harrington Endowed Professor of History

The Board of Trustees

The President's Cabinet

Inaugural Steering Committee

The Faculty

Student Representatives

Delegates from Colleges, Universities and Higher Education Associations

Program

Prelude

Processional (please stand)

“Crown Imperial”

Illinois Wesleyan Wind Ensemble

Lev Ivanov, *Assistant Professor of Music, Conductor*

William Walton

(1902–1983)

“America The Beautiful” (remain standing)

Sam Mullooly '16, *baritone*

Martha Aguirre '17, *soprano*

Samuel A. Ward

(1848–1903)

Invocation (remain standing)

Elyse Nelson Winger
University Chaplain

Welcome

Jonathan D. Green
Provost and Dean of Faculty

Poem for the Inauguration: *The Spirit Line*

Joanne Diaz
Associate Professor of English
Michael Theune
Professor of English

Cantate Domino

Illinois Wesleyan Collegiate Choir

J. Scott Ferguson, *Professor of Music, Conductor*

Józef Świder

(1930–2014)

Calls to Leadership

From the Board

Deon Hornsby '97
Board of Trustees

From a Presidential Perspective

Richard F. Wilson
President Emeritus

From Alumni

Elly Jones '91
President of the Alumni Association

From Faculty

Michael B. Young
Robert W. Harrington Endowed Professor of History

From Staff

Eric Gordon
2015 Max Starkey Service Award recipient

From Students

Lane Bennett '18
President of Student Senate

“Suleika I” D. 720

Jamie-Rose Guarrine '00, *soprano*

R. Kent Cook, *Professor of Music, piano*

Franz Schubert

(1797–1828)

Investiture of the 19th President

George Vinyard '71
Chair, Board of Trustees

Jean M. Baird '80
*Secretary, Board of Trustees
and Chair of Presidential Search Committee*

Introduction of the President

George A. Vinyard

Presentation of the Presidential Medallion

George A. Vinyard
Jean M. Baird

Inaugural Address

Eric R. Jensen

“The Liberal Arts in the 21st Century: Spotlight on Collaborative Engagement”

President

“Sit Down Servant”

arr. by Stacey V. Gibbs

Illinois Wesleyan Collegiate Choir

Alma Wesleyana (please stand and join in singing)

George William Warren

From hearts aflame, our love we pledge to thee,

(1828–1902)

Where'er we wander, over land or sea;

arr. Peter Andrew Gilbert '98

Through time unending loyal we will be—

True to our Alma Mater, Wesleyan.

When college days are fully past and gone,

While life endures, from twilight dream till dawn.

Grandly thy soul shall with us linger on—

Star crowned, our Alma Mater, Wesleyan!

Words by Professor W.E. Schultz

(1887–1964)

Benediction (remain standing)

Vaughn Hoffman

Wesley United Methodist Church

Recessional (remain standing)

“Procession of the Nobles”

Nicolai Rimsky-Korsakov

Illinois Wesleyan Wind Ensemble

(1844–1908)

arr. Erik W.G. Leidzén

Inaugural Celebration

Immediately following the ceremony, please join President and Elizabeth Jensen in the Shirk Activity Center for a Backyard Barbecue and Bluegrass reception featuring The Old Men Boys bluegrass band.

Ceremony interpreted by Lynne M. Poindexter

A first aid station is located in the main lobby outside the Arena entry doors.

President's Cabinet

Eric R. Jensen, Ph.D.	President of the University
Frank A. Boyd, Ph.D.	Associate Provost and Title IX Coordinator
Karla C. Carney-Hall, Ph.D.	Vice President for Student Affairs and Dean of Students
Robert C. Geraty '98, M.S.	Interim Dean of Admissions
Jonathan D. Green, D.M.A.	Provost and Dean of Faculty
Daniel P. Klotzbach, M.B.A.	Vice President for Business and Finance
Matthew O. Kurz, M.B.A.	Vice President for Communications
Molly L. Munson-Dryer, Ed.D.	Executive Assistant to the President
Robert P. Murray '82, M.S.	Dean of Enrollment Management
Martin W. Smith, M.S.	Vice President for Advancement
Carl F. Teichman '80, M.S.	Director of Government and Community Relations
Michael D. Thompson, Ed.D.	Assistant Vice President for Institutional Research, Planning and Evaluation
W. Michael Weis, Ph.D.	Chair and Professor of History, Council on University Programs and Policy Chair

Board of Trustees

Officers

George A. Vinyard '71, Chair – Glen Ellyn, IL
Thomas L. Brown '79, Vice Chair – Glen Ellyn, IL
Willie G. Brown, Vice Chair – Bloomington, IL
Herbert A. Getz '77, Vice Chair – Naperville, IL
Jean M. Baird '80, Secretary – Bloomington, IL
Robert E. Field '67, Treasurer – New Lenox, IL
Eric R. Jensen, President of the University – Bloomington, IL

Members of the Board of Trustees

Richard S. Ames	Chagrin Falls, OH
Phyllis Barker '73	Chicago, IL
Cathy T. Carswell '65	Greenwich, CT
Michael A. Clark '76	Arlington Heights, IL
Cesar Douglas Jr. '75	Tallahassee, FL
Marsha A. Guenzler-Stevens '78	Stevenson, MD
Vaughn Hoffman	Bloomington, IL
Deon Hornsby '97	Dundee, IL
John S. Horton '82	Paradise Valley, AZ
Daniel E. Jameson '80	Munster, IN
Elly L. Jones '91	Murfreesboro, TN
Jonathan D. Keaton	Springfield, IL
Richard M. King, II '67	Chicago, IL
W. Thomas Lawrence '80	Lake Bluff, IL
Kathy Larey Lewton '70	Stamford, CT
Michael A. Mason '80 H'06	Basking Ridge, NJ
Thomas C. McKinney, Jr. '76	Chesterfield, MO
Thomas J. Neis '70	Crystal Lake, IL
Mark Ohlendorf '82	Milwaukee, WI
Stephen L. Ondra '80	Chicago, IL
Laura C. Randolph '92	Bloomington, IL
J. William Roberts '64	Springfield, IL
Ronald L. Ruecker '66	Decatur, IL
Edward B. Rust, Jr. '72, H'94	Bloomington, IL
James A. Shirk	Bloomington, IL
Timothy J. Szerlong '74	Lake Forest, IL
Byron Tucci '66	Bloomington, IL
Steven J. Wannemacher '73	Bloomington, IL
David G. Wilkins '74	Freeland, MI
Jill E. York '85	Elmhurst, IL
Robert K. Zimmerman '71	St. Louis, MO

Honorary Trustees

The Earl of Buckinghamshire
London, England
Howard R. Fricke '60 H'09 and Sharon Fricke '60
Reno, NV
Kenji Tanaka H'91
Tokyo, Japan
Kent W. '62 and Sue Wallace
Dallas, TX

Emeritus Trustees

Flora Harris Armstrong '43	Bloomington, IL
Marvin D. Bower '45	Scottsdale, AZ
Ronald B. Cate '54	Wildrose, WI
Gilbert L. Dorsey '62	Bloomington, IL
Robert E. Evans '62	Holden, MA
David W. Gaffron	Bloomington, IL
Craig C. Hart H'08	Hudson, IL
J. Richard Hull '55	Sarasota, FL
John E. Jordan '57	Urbana, IL
Parker Kemp	Lexington, IL
Garry D. Kinder '55	Dallas, TX
Rebie R. Kingston H'96	West Bloomfield, MI
The Hon. John W. Maitland, Jr.	Bloomington, IL
Dominick Monge '40	Sarasota, FL
Robert E. Page '58	Rancho Santa Fe, CA
John W. Remo '58	West Lafayette, IN
Sidney G. Smith '60	Carbondale, IL
John C. Stutzman '54	Bloomington, IL
Anne Colwell Tryon	Frankfort, MI
Martha Coolidge Wetzel '52	South Pasadena, CA
Richard F. Wilson, President Emeritus	Scottsdale, AZ

Delegates

FOUNDED

- | | |
|--|---|
| 1636 Harvard University
Richard S. Lowry
<i>Alumnus</i> | 1833 Kalamazoo College
Cindy Loui
<i>Alumna</i> |
| 1693 William and Mary
Robert B. Archibald
<i>Professor</i> | 1834 Wheaton College
Ruth Ann Friedberg
<i>Alumna</i> |
| 1749 Washington and Lee
Corydon C. Nicholson, II
<i>Alumnus</i> | 1837 Knox College
Teresa L. Amott
<i>President</i> |
| 1791 University of Vermont
Alan Sickbert
<i>Alumnus</i> | 1842 Ohio Wesleyan University
Barbara Meyer
<i>Alumna</i> |
| 1793 Williams College
Robert J. Pierce
<i>Alumnus</i> | 1846 Grinnell College
Ara Aprahamian
<i>Alumnus</i> |
| 1800 Middlebury College
Susan Taylor
<i>Professor</i> | 1846 Grinnell College
Emily Martin
<i>Alumna</i> |
| 1800 University of Chicago
Jim Simeone
<i>Alumnus</i> | 1847 Earlham College
Jessica Jensen
<i>Alumna</i> |
| 1812 Hamilton College
William Keller
<i>Alumnus</i> | 1851 Northwestern University
Michael J. Moore
<i>Professor</i> |
| 1819 Centre College
Kyle Galbraith
<i>Alumnus</i> | 1852 Wartburg College
Darrel D. Colson
<i>President</i> |
| 1828 McKendree University
Miley Palmer
<i>Alumna</i> | 1853 Cornell College
Jerry Ringer
<i>Alumnus</i> |
| 1829 Illinois College
Elizabeth H. Tobin
<i>Provost</i> | 1854 Hamline University
Marcela Kostihova
<i>Professor</i> |
| 1832 Wabash College
Tobey Herzog
<i>Professor</i> | 1855 Bates College
Maria Gillombardo
<i>Alumna</i> |

- 1855 **Bates College**
Jason Scott
Alumnus
- 1855 **Berea College**
Margaret Tennis
Alumna
- 1855 **Eureka College**
Daniel Blankenship
Provost
- 1857 **Lake Forest College**
Gerard Cebzynski
Associate Vice President
- 1860 **Augustana College**
Steven C. Bahls
President
- 1860 **Simpson College**
Robert F. Kennett
Professor
- 1860 **Wheaton College**
Philip G. Ryken
President
- 1861 **North Central College**
Troy D. Hammond
President
- 1866 **College of Wooster**
Joseph Jensen
Alumnus
- 1869 **Southern Illinois University**
Stephen Hunt
Alumnus
- 1870 **Ohio State University**
Derrick Tilman-Kelly
Alumnus
- 1870 **Wellesley College**
Elyse Nelson Winger
Alumna
- 1871 **Elmhurst College**
Larry A. Braskamp
President
- 1883 **Houghton College**
Staci N. Fuller
Alumna
- 1883 **Whitman College**
Kathleen Murray '79
President
- 1890 **Viterbo University**
Juan F. Jimenez
Alumnus
- 1891 **Randolph College**
Cheryl Abernathy
Alumna
- 1897 **Trinity International University**
Thomas H.L. Cornman
Vice President
- 1898 **St. Norbert College**
Jeff Frick
Dean
- 1901 **Millikin University**
Patrick White
President
- 1901 **Sweet Briar College**
Christine Boulware
Alumna
- 1926 **Sarah Lawrence College**
Elizabeth Duncan Jenkins
Alumna

Acknowledgements

In addition to those recognized elsewhere in the program, the Inauguration Steering Committee would especially like to thank:

Debra Adams: *for providing first aid services for the investiture ceremony*

Darcy L. Greder: *for coordinating ushers for the investiture ceremony*

The Department of German, Russian and Asian Languages, School of Music, and Ames School of Art:
for their gracious flexibility with events that overlap the inaugural weekend

Illinois Wesleyan and Sodexo Staff: *for their extra effort and hours preparing for the inaugural events*

Sodexo: *for graciously accommodating a large, complex set of events*

Student Ushers: *for providing hospitality to our guests*

Publications, Printing and Mailing Services: *for their work on all of the inaugural materials, campus banners and so much more*

Physical Plant Staff: *for the many hours that they spent planning, setting up and tearing down events.*





♻️ Please recycle this program in specially marked recycle containers.