



4-2022

## Titan Success: Faculty Behind the Scenes, April

Mellon Center

Follow this and additional works at: [https://digitalcommons.iwu.edu/provost\\_publications](https://digitalcommons.iwu.edu/provost_publications)



Part of the [Higher Education Commons](#)

---

### Recommended Citation

Mellon Center, "Titan Success: Faculty Behind the Scenes, April" (2022). *Publications from the Associate Deans*. 2.

[https://digitalcommons.iwu.edu/provost\\_publications/2](https://digitalcommons.iwu.edu/provost_publications/2)

This Article is protected by copyright and/or related rights. It has been brought to you by Digital Commons @ IWU with permission from the rights-holder(s). You are free to use this material in any way that is permitted by the copyright and related rights legislation that applies to your use. For other uses you need to obtain permission from the rights-holder(s) directly, unless additional rights are indicated by a Creative Commons license in the record and/ or on the work itself. This material has been accepted for inclusion by faculty at Illinois Wesleyan University. For more information, please contact [digitalcommons@iwu.edu](mailto:digitalcommons@iwu.edu).

©Copyright is owned by the author of this document.

# FACULTY BEHIND THE SCENES

*The latest in Titan Success, making Tommy proud.*

## *In This Issue*

**Dr. Knoll is  
Feeding the Future**

**Dr. Gibbs Chosen  
for Success**

**Dr. Kerr on a Roll**

**Director Larey  
Judging Excellence**

### **Mellon Center**

p. 309.556.3902

e. melncntr@iwu.edu

a. Holmes Hall, 200

w. iwu.edu/mellon-center/

Newsletter construction by Shea Atkins '23

*Hispanic Studies*

*Secondary Education*



photo: SelectStock images

## **Dr. Knoll Publishes Article on Premature Infant Feeding**

Associate Professor of Nursing, Dr. Knoll has collaborated on a publication that details the nuances of a mother and a rater\* using the same EFS (early feeding skills) assessment to judge a premature infant's feeding skills. Premature infants can have many issues regarding feeding properly. The EFS assessment is a 28 factor observational assessment for mothers and professionals to use in order to rate the infant's ability to feed. The purpose of training mothers in this assessment is so that they can actively participate in the care-giving of healthcare professionals to their infants. It was concluded that while the results of this specific study were good (each section of the inter-rater assessment scoring above .75) it was a pilot study with a reduced test group. In order to further validate the usefulness and accuracy of the EFS assessment more studies will need to be conducted.

Full Article: <https://doi.org/10.1016/j.ijporl.2022.111069>

\*Rater - A qualified person more familiar with the EFS assessment who is not the mother. This purpose of the rater is to give an accurate assessment in relation to the mothers.

## DATES TO REMEMBER



**April 15: Fall adoptions due to the Bookstore**

**April 18, 4pm: University Excellence Awards applications due to the Mellon Center (melncntr@iwu.edu)**

**May 1, 1pm: Commencement**

**May 3: FDC Scholarship Renewal Workshop**

**May 6: CETAL Workshop: Toward Inclusive Excellence in Your Learning Environment**

## **SoTA Professor Chosen for *The Black Book Interactive Project***

Assistant Professor of Theatre Arts, Dr. Michelle Gibbs, was selected to be one of 14 scholars for The Project on the History of Black Writing's Black Book Interactive Project. "The Black Book Interactive Project is a collaborative research project that seeks to increase the number of black-authored texts in the study of digital humanities. By generating a metadata schema that accounts for race and race-related issues, we will correct the digital divide in black-authored texts. BBIP has been funded by the University of Kansas, the National Endowment for the Humanities (NEH), the American Council of Learned Societies (ACLS) and the Andrew Mellon Foundation. <https://bbip.ku.edu/> I will use the time and resources available to work on my Zora Neale Hurston digital database and website project. My project seeks to examine, cross-reference, and analyze depictions of early twentieth-century Black womanhood in Hurston's theatrical, ethnographic, and fiction works" (Gibbs, 2022). Dr. Gibbs is crossing her fingers for a successful professional publishing to come from this already Titan success.



DR. MICHELLE GIBBS

Photo: IWU.edu

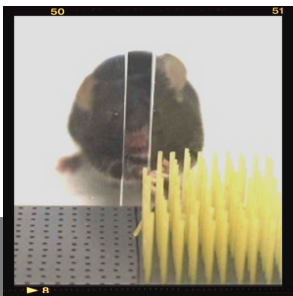


Photo:  
Dr. Kerr, IWU

## Dr. Kerr co-authors publications with several IWU students

Associate Professor of Psychology, Dr. Kerr, along with 2 IWU student co-authors, published an article in *Neurorehabilitation & Neural Repair*, the second highest ranked journal in the field of neurorehabilitation. The article investigated lower intensity rehabilitative training in order to help understand the basic mechanisms of stroke and recovery in a mouse model. It was found that while training every other day after stroke is beneficial, it is best to train every day. Dr. Kerr states, "A second paper, published in 2021, looked at one of the adjunctive therapies that we explore in our lab - aerobic exercise. Published in *Experimental Brain Research*, a top journal in the field, with three IWU undergraduate co-authors, this work found that voluntary exercise prevents maladaptive plasticity associated with compensatory limb use in our mouse model" (Kerr, 2022). This is in addition to a third paper also published in 2021 featured in *Reviews in the Neurosciences*.

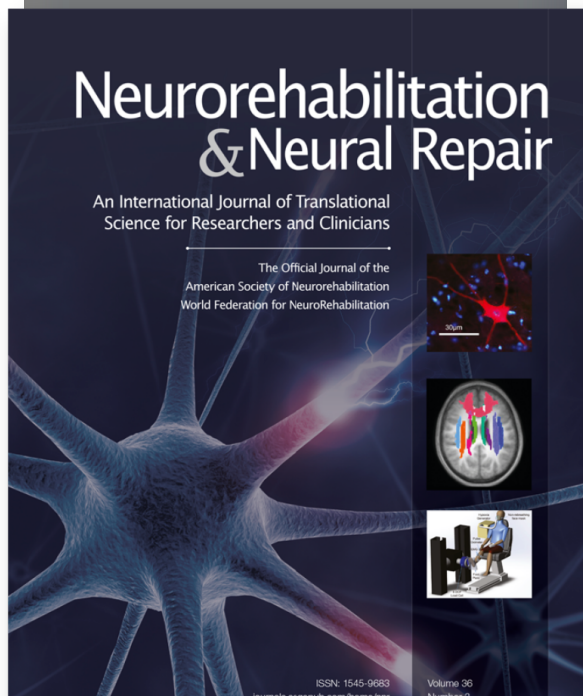


Photo: Most recent edition of *Neurorehabilitation & Neural Repair* March 2022

## Director Franklin Larey Inspiring Young Musicians

As the Director of the School of Music, Professor Larey delivered a keynote address at Millikin University, which was hosting the College Music Society's annual conference on March 19. From March 21st through the 25th Director Larey served as a masterclass teacher and adjudicator at the 50th Seattle Young Artists Music Festival. The Seattle Young Artists Music Festival Association is where "students perform individually or in small groups before professional music educators whose mission is to nurture confidence and guide students toward improved technical and musical performance" (syamfa.org). "Adjudicators\* from across the country are brought to Seattle just for this event and include faculty and performing artists from the best conservatories in America" (syamfa.org).



Photo: iwu.edu

\*Festival Judges



# In Other News...

## Sharing your Scholarship!

SelectedWorks is the faculty and staff-focused portion of IWU's Digital Commons. It enables users to create a personal webpage to highlight their scholarly work. A SelectedWorks profile will enhance the discoverability of your publications, presentations, and research projects. Results from SelectedWorks often rank higher than other types of websites in search engine results. The included Author Dashboard allows you to access metrics including number of times materials were downloaded and where the downloads geographically originated from. For an example you can visit the dashboard for all of Digital Commons at IWU. You can also view examples of your colleagues' SelectedWorks pages here:

[https://digitalcommons.iwu.edu/sw\\_gallery.html](https://digitalcommons.iwu.edu/sw_gallery.html)

You can use this link to create your own account or contact **Amy Sutter** ([asutter@iwu.edu](mailto:asutter@iwu.edu) / x3728) in the Ames Library to have us set one up for you. We will also assist with exploring the publisher policies for posting full-text versions of your publications. If you have an existing account, but it hasn't been updated in a while, Amy can also help with that; sending her a current C.V. will begin the update process.

If you have any questions about SelectedWorks, or scholarly publishing in general, please contact **Chris Sweet**, Scholarly Communications Librarian ([csweet@iwu.edu](mailto:csweet@iwu.edu) / x3984)

# AMES HELP!

Brought to you by:  
Stephanie Davis-Kahl



## DO YOU NEED DATA?



Visit the ICPSR, "a data archive of more than 250,000 files of research in the social and behavioral sciences. It hosts 21 specialized collections of data in education, aging, criminal justice, public health, criminology, substance abuse, terrorism, and other fields."

Our membership with ICPSR also includes access to:

- summer programs for students & faculty
- scholarships for summer programs
- podcasts, classroom exercises, and more



To access ICPSR, go to:  
[https://libguides.iwu.edu/stats\\_data](https://libguides.iwu.edu/stats_data)

If you would like to be featured in the next newsletter follow the link to our Success Survey!

<https://forms.gle/zYTCPoi8JQTLF8Lv9>