



3-29-2014

## 2014 Pride Summit Brochure

Illinois Wesleyan University

Follow this and additional works at: [https://digitalcommons.iwu.edu/pac\\_docs](https://digitalcommons.iwu.edu/pac_docs)

---

### Recommended Citation

Illinois Wesleyan University, "2014 Pride Summit Brochure" (2014). *Related Documents*. 4.  
[https://digitalcommons.iwu.edu/pac\\_docs/4](https://digitalcommons.iwu.edu/pac_docs/4)

This Article is protected by copyright and/or related rights. It has been brought to you by Digital Commons @ IWU with permission from the rights-holder(s). You are free to use this material in any way that is permitted by the copyright and related rights legislation that applies to your use. For other uses you need to obtain permission from the rights-holder(s) directly, unless additional rights are indicated by a Creative Commons license in the record and/ or on the work itself. This material has been accepted for inclusion by faculty at Illinois Wesleyan University. For more information, please contact [digitalcommons@iwu.edu](mailto:digitalcommons@iwu.edu).

©Copyright is owned by the author of this document.

IWU *Pride*  
**SUMMIT**

---

**IDENTITY: WHO I AM ON  
THE INSIDE AND OUTSIDE**

**Illinois Wesleyan University  
Saturday, March 29, 2014**

## **PAC MISSION STATEMENT**

The Pride Alumni Community (PAC) welcomes all members of the Illinois Wesleyan University community to join us: alumni, students, faculty, staff, family and friends of the University. Our mission is to connect members of the LGBTQ community, friends and allies to our alma mater.

We support the Pride Alliance, the IWU student-run organization on campus, in their commitment to all students, regardless of sexual orientation or gender identity. We also support their transition into engaged alumni who will continue to be productive members of the University upon graduation.

We share the University's overall educational, admission, career, and fundraising objectives, especially as they relate to and affect LGBTQ students, faculty, and staff.

## **PRIDE ALLIANCE STATEMENT**

The Illinois Wesleyan University Pride Alliance is a student organization that works to ensure that all students have equal rights regardless of sexual orientation or gender identity. Pride generates awareness of issues affecting the gay, lesbian, bisexual, and trans-gendered communities through education and activism.

## **WELCOME**

March 29, 2014

Welcome to the first Pride Summit at IWU. We are thrilled that you have joined us today.

This year's theme is "Identity: Who I am on the Inside and Outside" and explores issues of personal, gender, racial, cultural, sexual and professional identity. We want you to meet and network with members of the Pride Alumni Community, share your experiences and explore your identity in a fun, supportive and safe environment.

Our goal is to encourage you to share: who you are, where you come from, and how you operate. We all bring our own style, personality, talents and experiences to all of our interactions. Today is a day to think about and share those with one another. We are all on a journey of self-discovery. Thank you for joining us today and sharing part of your journey. We hope this will be the first of many more such events between alumni, students, staff, faculty and allies of the Pride Community here at IWU.

Jim Richter '93  
Pride Alumni Community  
Co-chairperson

Todd Zoellick '00  
Pride Alumni Community  
Programming Chairperson



**9:30AM**

Turfler Room

**CONTINENTAL BREAKFAST AND  
REGISTRATION**

Members of the Pride Alumni Community and Alumni Relations

**10:00AM**

Joslin Atrium

**WELCOME**

Ann Harding  
Provost Jonathan Green

**10:10AM**

Joslin Atrium

**WHAT I WOULDN'T SELL, TRADE, OR  
GIVE AWAY**

Todd Zoellick  
Thank you for bringing something that you would not sell, trade, or give away. Take a deep breath. Relax. This activity is designed to help us get to know one another better. Who are you? Where do you come from? What is important to you?

**11:00AM**

Joslin Atrium

**MY STYLE, YOUR STYLE, OUR STYLE**

Todd Zoellick  
Using Tony Gregorc's Leadership Style Delineator, we are going to assess the way we each acquire and process information differently. This model is based on the existence of perceptions—our evaluation of the world by means of an approach that makes sense to us. These perceptions in turn are the foundation of our specific learning strengths, or learning styles.

**12:30PM**

Turfler Room

**LUNCH  
Remarks**

Sundee Mullangi

**Appreciation for Josh Butts**

Ann Harding

**IWU Pride Climate Report**

Matthew Damschroder

**1:30PM**

Joslin Atrium

**DIVERSITY SHUFFLE**

Meghan Burke and Rachel Wimberly  
This exercise will facilitate discussion about differences and similarities within our campus community. The diversity shuffle will help us explore our personal, gender, racial, cultural, spiritual, and sexual identity. Afterwards, we'll shuffle into small groups to discuss our experience.

**2:30PM**

**BREAK**

**2:45PM**

Joslin Atrium

**CAREER PANEL PRESENTATION:  
LGBTQ IDENTITY IN THE WORKPLACE**

Members of the Pride Alumni Community and Hart Career Center join us for this lively discussion exploring LGBTQ identity in the workplace. Our panel includes alumni from across the country working in education, healthcare, business, non-for-profit, and public policy.

**3:45PM**

Joslin Atrium

**CLOSING REMARKS**

Jim Richter

**4:00PM**

Joslin Atrium

**PAC LEADERSHIP MEETING**

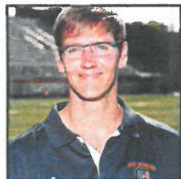
Rachel Paturi  
Following the summit, all Pride Alumni are welcome to stay and attend our spring meeting to discuss our strategic goals for the year, including organizing committees for communication, membership, programming, and philanthropy.

## BIOS OF PAC LEADERSHIP AND ALUMNI PARTICIPANTS



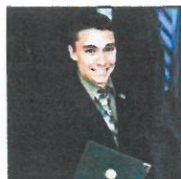
### Josh Butts '01

Josh Butts '01, is Managing Director of Development at Harvard Medical School. In this role, Josh focuses on major gifts fundraising for the Medical School's global health program, focusing heavily on work in Haiti and Rwanda. Josh lives in Cambridge, MA and was a history and English double major at IWU.



### Jason Dennis '00

Jason Dennis '00, is a high school psychology teacher and football coach at Oak Park & River Forest High School in Oak Park, IL. Jason was a history & psychology double major with an education minor. He played football and ran track while at IWU.



### Bobby Castillo '13

Bobby Castillo '13 is an Admissions Counselor at IWU in Bloomington, IL. He majored in English Literature with a minor in philosophy.



### Tracy Garrett '81

Tracy Garrett '81 was a music major and is now an award-winning multi-published author. She has also served as Secretary on our Alumni Association Executive Board for many years. Tracy resides in Missouri with her husband and their fuzzy kid, Wrigley.



### Scott Huch '86

Scott Huch '86 is President of The Delta Group in Annandale, Virginia, a company he co-founded in 1993. Scott served as a Republican Precinct Committeeman in Fairfax County, Virginia, from 1990 to 2004. During the 2000 campaign for President, he was part of a small group that was invited to Austin, Texas, to meet with then-Governor George W. Bush to advise him and his campaign staff on outreach strategy to the LGBT community. Scott majored in political science.



### Elly Jones '91

Elly Jones '91 lives just outside of Nashville, TN and is a Division Manager for TN, OH, and KY for State Farm Insurance. She majored in Psychology and now serves as Vice-President on the Alumni Association Executive Board.



### Warren Kistner '83

Warren Kistner '83 completed his undergraduate study in Business Administration with a minor in History. Following five years of Business Management experience, he completed a Master's in Counseling at Illinois State University. Warren has worked in IWU Career Services since 1995.



### Sundeep V. Mullangi '97

Sundeep V. Mullangi '97, of Chicago, is senior managing director with PPM America, an investment management firm that is an indirect subsidiary of the British holding company Prudential plc. As the new Alumni Association President, he joins the Board for a three-year ex-officio term. A double major in accounting and economics at Illinois Wesleyan, Mullangi began his career at PricewaterhouseCoopers and Heller Financial, before joining PPM America in 2003.



### Jim Richter '93

Jim Richter '93 lives in Chicago and works as a consultant in pathology and laboratory medicine. Jim works with a variety of healthcare organizations, from small community hospitals to large university systems, to improve pathology services through lean processes, utilization of personnel and diagnostic excellence. His major at IWU was Natural Science.



### Molly Rollings '99

Molly Rollings '99 was a Risk Management/Insurance major and now lives in Champaign, Illinois. She is a Commercial Insurance Producer at Dimond Bros.



### Daniel Rossi '09

Daniel Rossi '09 is a program evaluator at a community-based organization on the West Side of Chicago. In his current position, Daniel manages all data and evaluation projects for the nonprofit and its affiliated social enterprise. Daniel graduated from IWU with a major in Philosophy and recently completed his Masters of Public Affairs.



### Kristi Roth '91

Kristi Roth '91 graduated with a BA in French. She works as a web specialist at State Farm and lives in Normal with her husband, Ken, and two kitties, Cleo and Ramses.



### Todd Zoellick '00

Todd Zoellick '00 majored in history, political science with minors in English and business. Todd is a business leader, author, educator, attorney, and policy/operations expert for education. He is the President of TransitPro Logistics, a Senior Advisor to Atlantic Research Partners and also the Founder and President of Zoellick Enterprises, LLC. Todd is also the author of children's books.



## **CALENDAR OF PAC EVENTS**

### **HOMEcoming BRUNCH**

**SUNDAY, OCT 19, 2014**

**11AM**

### **PRIDE CHICAGO CONNECTION**

**JULY 2014, DATE TBA**

## **PRIDE ALLIANCE EVENTS**

### **LAVENDER GRAD CELEBRATION**

**THURSDAY, APRIL 3, 2014**

**7:30PM JOSLIN ATRIUM**

### **DRAG BALL**

**FRIDAY, APRIL 18, 2014**

**7:00PM HANSEN STUDENT CENTER**

**For more information on IWU Pride Alumni Community, go to  
[www.titanpride.org/pridealumni](http://www.titanpride.org/pridealumni)**