



Summer 9-10-2008

President's Convocation (2008 Program and audio)

Illinois Wesleyan University

Follow this and additional works at: https://digitalcommons.iwu.edu/presidents_docs



Part of the [Higher Education Commons](#)

Recommended Citation

Wesleyan University, Illinois, "President's Convocation (2008 Program and audio)" (2008).
President's Convocation. 36.

https://digitalcommons.iwu.edu/presidents_docs/36

This Article is protected by copyright and/or related rights. It has been brought to you by Digital Commons @ IWU with permission from the rights-holder(s). You are free to use this material in any way that is permitted by the copyright and related rights legislation that applies to your use. For other uses you need to obtain permission from the rights-holder(s) directly, unless additional rights are indicated by a Creative Commons license in the record and/ or on the work itself. This material has been accepted for inclusion by faculty at Illinois Wesleyan University. For more information, please contact digitalcommons@iwu.edu.

©Copyright is owned by the author of this document.

Illinois Wesleyan University

PRESIDENT'S CONVOCATION



Westbrook Auditorium
Presser Hall
September 10, 2008
11:00 AM

PROGRAM

President Richard F. Wilson, *Presiding*

Prelude
Scott Schumann '09, *trumpet*; Dan George '09, *trumpet*; Jessica Pearce '09, *horn*;
Matt Luhn '10, *trombone*; Don Killinger '09, *tuba*

Processional (*please stand*)
Trumpet Tune
Jeremiah Clarke
(1674-1707)

Invocation (*remain standing*)
Hope Luckie
University Chaplain

Welcome
Richard F. Wilson
President

Greetings from the Student Senate
Andrea Ambrosia '09
President, Student Senate

Special Music
"To son l'umile ancella" from Adrianna Lecouvreur
Francesco Cilèa
(1866-1950)

Professor Carren Moham, soprano
Professor R. Kent Cook, piano

Introduction of Speaker
Beth Cunningham
Provost and Dean of the Faculty

Address
"Decoding the World Through the Unique Perspective of Autism"
Temple Grandin

Alma Wesleyana
(*please stand and join in singing led by Mallory Roberts '09*)
Brass Ensemble

NATIONAL HYMN
George William Warren
(1828-1902)

From hearts aflame, our love we pledge to thee,
Where'er we wander, over land or sea;
Through time unending, loyal we will be—
True to our Alma Mater, Wesleyan.
When college days are fully past and gone,
While life endures, from twilight gleam til dawn,
Grandly thy soul shall with us linger on—
Star-crowned, our Alma Mater, Wesleyan.
—*Professor W. E. Schultz (1935)*

Benediction (*remain standing*)
Chaplain Luckie

Recessional (*remain standing*)
Hornpipe from The Water Music
Brass Ensemble
George Frideric Handel
(1685-1759)



photo by Angus Bremmer of Bremmer Photo

DR. TEMPLE GRANDIN

Acclaimed author, celebrated speaker, noted scientist—it is with good reason that Temple Grandin is said to be one of the most accomplished and well-known adults with autism in the world. Since her first book *Emergence: Labeled Autistic* debuted in 1986, her ability and willingness to give voice to the inner lives of autistic individuals has disproved medical assumptions and refined expectations for their achievement.

Diagnosed in 1950 when she was three and half years old, Dr. Grandin has described her personal struggle with autism as “groping from the far side of darkness.” From bestselling memoirs,

such as *Thinking in Pictures: And Other Reports From My Life with Autism* (1995), to contributions in practical guides, such as *Developing Talents: Careers for Individuals with Asperger Syndrome and High Functioning Autism* (2004), Dr. Grandin’s writings have informed and inspired a generation of autism awareness advocates.

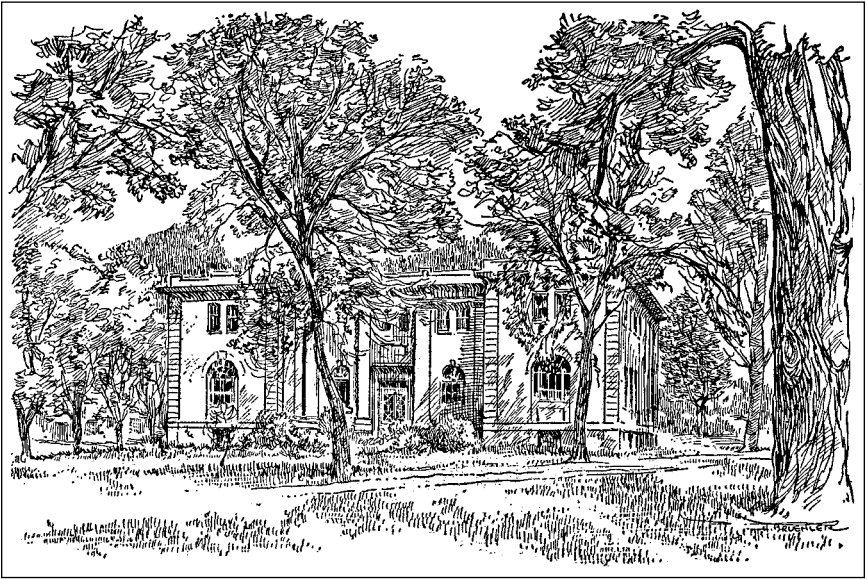
Most recently, her *Unwritten Rules of Social Relationships: Decoding Social Mysteries Through the Unique Perspectives of Autism* was selected as the winner of the prestigious Foreword Book of the Year Award for 2006. Additionally, she has published multiple books on the subject of animal science, including *Animals in Translation: Using the Mysteries of Autism to Decode Animal Behavior* (2004).

Dr. Grandin has been featured on major television programs, such as *ABC’s Primetime Live*, the *Today Show*, *Larry King Live*, *48 Hours* and *20/20*, as well as in national publications, such as *Time* magazine, *People* magazine, *Forbes*, *U.S. News and World Report*, and the *New York Times*. She has spoken on National Public Radio, and has contributed to a series of videos for Future Horizons, an organization dedicated to providing helpful, up-to-date information on autism and Asperger’s Syndrome to individuals, families and professionals.

Traveling the world on speaking engagements, Dr. Grandin promotes both autism awareness and humane treatment for livestock. The author of over 300 articles published in scientific journals and livestock periodicals on animal welfare, her work on the principles of grazing animal behavior is credited with helping reduce the stress on livestock during handling. She is the designer of livestock handling facilities used internationally, and nearly half of the operating facilities in North America are of her design.

Currently, Dr. Grandin is a professor of animal science at Colorado State University. She earned a bachelor’s degree in psychology in 1970 at Franklin Pierce College in Rindge, N.H. and a master’s degree in animal science in 1975 from Arizona State University. In 1989, Dr. Grandin earned a Ph.D. in animal science from the University of Illinois at Urbana-Champaign.

SCIENCE HALL



From a 1931 booklet of pen sketches:

*“THIS BUILDING WAS MADE POSSIBLE LARGELY
BY A GIFT OF ANDREW CARNEGIE IN 1910 AND
HAS CONSTANTLY BEEN KEPT MODERN IN
EVERY RESPECT DURING THE PAST TWENTY
YEARS. CHEMISTRY, BIOLOGY, ZOOLOGY, AND
PHYSICS DEPARTMENTS ARE QUARTERED IN
THIS ATTRACTIVE BUILDING.”*

*The Edgar M. Stevenson Hall of Nursing, formerly known
as Science Hall, was dedicated on October 9, 1965.*

Please turn off phones and electronic devices



*Program distribution provided by members of
The IWU Autism Social Group and Psychology 332: Autism Seminar.*