



Spring 2-17-2010

Founders' Day Convocation (2010 Program)

Illinois Wesleyan University

Follow this and additional works at: https://digitalcommons.iwu.edu/founders_day_docs

Recommended Citation

Illinois Wesleyan University, "Founders' Day Convocation (2010 Program)" (2010).

Founders' Day. 12.

https://digitalcommons.iwu.edu/founders_day_docs/12

This Article is protected by copyright and/or related rights. It has been brought to you by Digital Commons @ IWU with permission from the rights-holder(s). You are free to use this material in any way that is permitted by the copyright and related rights legislation that applies to your use. For other uses you need to obtain permission from the rights-holder(s) directly, unless additional rights are indicated by a Creative Commons license in the record and/ or on the work itself. This material has been accepted for inclusion by faculty at Illinois Wesleyan University. For more information, please contact digitalcommons@iwu.edu.

©Copyright is owned by the author of this document.

Illinois Wesleyan University

FOUNDERS' DAY CONVOCATION



Westbrook Auditorium
Presser Hall
February 17, 2010
11:00 AM

PROGRAM

President Richard F. Wilson, *Presiding*
Professor Michael C. Seeborg, the Robert S. Eckley Professor of Economics,
Mace Bearer

PRELUDE AND PROCESSIONAL <i>(please stand during Processional)</i> Fugue in 3b Major	Doris Hill <i>Organist</i> J.S. Bach <i>(1685-1750)</i>
INVOCATION <i>(remain standing)</i>	Hope Luckie <i>University Chaplain</i>
FOUNDERS' DAY REMARKS	Richard F. Wilson <i>President</i>
SPECIAL MUSIC No Weapon	Wesleyan Chapel Gospel Choir Stefan Riley '12, <i>Director</i> <i>Fred Hammond</i> <i>(b. 1960)</i>
INTRODUCTION OF SPEAKER	Beth Cunningham <i>Provost and Dean of the Faculty</i>
REMARKS "Environment, Social Justice, and the Challenge of Sustainability"	Dorceta E. Taylor
ALMA WESLEYANA <i>(please stand and join in singing)</i>	Ms. Hill NATIONAL HYMN <i>George William Warren</i> <i>(1828-1902)</i>
From hearts aflame, our love we pledge to thee, Where'er we wander, over land or sea; Through time unending, loyal we will be — True to our Alma Mater, Wesleyan. When college days are fully past and gone, While life endures, from twilight gleam til dawn, Grandly thy soul shall with us linger on — Star-crowned, our Alma Mater, Wesleyan.	— <i>Professor W. E. Schultz (1935)</i>
BENEDICTION <i>(remain standing)</i>	Chaplain Luckie
RECESSIONAL <i>(remain standing)</i> Toccata	Ms. Hill <i>Eugene Gigout (1844-1925)</i>

Dorceta E. Taylor

**Associate Professor of Environmental Justice
and of Afroamerican and African Studies,
University of Michigan, and
Director of the Multicultural Environmental
Leadership Development Initiative**



Dr. Dorceta Taylor has spent her career shedding light on the connections between nature, race and gender, making her a pioneer in the study of environmental racism and an activist for environmental justice. Named in 2007 to “Who’s Who Among American Teachers and Educators,” Dr. Taylor is not only a long-time advocate for the environmental movement, but also of inclusion within the movement.

Dr. Taylor participated in the landmark 1990 environmental justice conference at the University of Michigan’s School of Natural Resources and Environment (SNRE) known as the “Race and the Incidence of Environmental Hazards,” and contributed to the book that evolved from the conference titled *Race and the Incidence of Environmental Hazards: A Time for Discourse* (Westview Press, 1992).

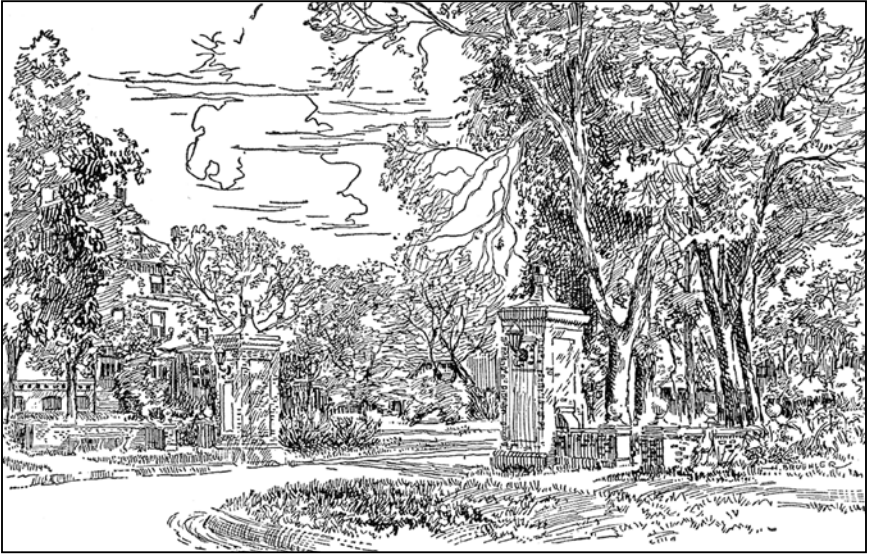
In 2005, she held a National Summit on Diversity in the Environmental Field at the SNRE, and convened an international Faculty Diversity and Environmental Justice Research Symposium at the University of Michigan in 2007 to discuss diversity in the environmental field and the state of environmental justice research.

The author of three ground-breaking books that explore race and gender within the environmental movement, Dr. Taylor’s latest work is *The Environment and People in American Cities, 1600s-1900s: Disorder, Inequity, and Social Change* (Duke University Press, 2009). The book provides a previously unexplored perspective of problems such as overcrowding, pollution and urban poverty in the context of environmental racism. She is also the author of *Race, Class, Gender, and American Environmentalism* (Diane Publishing, 2003) and *Ethnic Leisure Pursuits* (Mellen University Press, 1992).

Dr. Taylor earned joint doctorates in sociology and forestry and environmental studies from Yale University in 1991, to which she returned in 2005 as the Edward P. Bass Distinguished Visiting Environmental Scholar at the Institute for Biospheric Studies. She earned master’s degrees from Yale in sociology and forestry and environmental studies in 1988 and in forest science in 1985. Her undergraduate degrees from North-eastern Illinois University are in environmental studies and biology.

Dr. Taylor is currently an associate professor of Environmental Sociology and Afroamerican and African Studies at the University of Michigan, where she helped to develop one of the nation’s first environmental justice programs at the university. Along with teaching courses at the University of Michigan in environmental politics and justice, women and the environment, and gender development and equality, Dr. Taylor is the Program Director of the Multicultural Environmental Leadership Development Initiative (MELDI), which is aimed at enhancing career development skills and leadership opportunities for students of color and minority professionals in the environmental field.

FOUNDERS GATES INSCRIPTION



From a 1931 booklet of pen sketches of Illinois Wesleyan University

WE STAND IN A POSITION OF INCALCULABLE RESPONSIBILITY TO THE GREAT WAVE OF POPULATION OVERSPREADING THE VALLEY OF THE MISSISSIPPI. DESTINY SEEMS TO POINT OUT THIS VALLEY AS THE DEPOSITORY OF THE GREAT HEART OF THE NATION. FROM THIS CENTER, MIGHTY PULSATIONS, FOR GOOD OR EVIL, MUST IN THE FUTURE FLOW, WHICH SHALL NOT ONLY AFFECT THE FORTUNE OF THE REPUBLIC, BUT REACH IN THEIR INFLUENCE OTHER AND DISTANT NATIONS OF THE EARTH.

FOUNDERS OF ILLINOIS WESLEYAN

Peter Cartwright	W. H. Allin	Thomas P. Rogers
C. W. Lewis	W. C. Hobbs	John W. Ewing
J. C. Finley	John E. McClun	Lewis Bunn
John S. Barger	John Magoun	E. Thomas
James Leaton	Thomas Magee	Isaac Funk
John Van Cleve	William Wallace	James Allin
James F. Jaquess	Charles P. Merriman	D. Trimmer
William J. Rutledge	James Miller	Kersey H. Fell
C. M. Holliday	William H. Holmes	Silas Watters
W. D. R. Trotter	Linus Graves	Reuben Andrus