



8-2-2018

The International Perspective

Sevyn Liu

Theo Bantas

Veer Gulia

Cathy Peng

Follow this and additional works at: https://digitalcommons.iwu.edu/odi_sep



Part of the [Higher Education Commons](#)

Recommended Citation

Liu, Sevyn; Bantas, Theo; Gulia, Veer; and Peng, Cathy, "The International Perspective" (2018). *Summer Enrichment Program*. 13.

https://digitalcommons.iwu.edu/odi_sep/13

This Article is protected by copyright and/or related rights. It has been brought to you by Digital Commons @ IWU with permission from the rights-holder(s). You are free to use this material in any way that is permitted by the copyright and related rights legislation that applies to your use. For other uses you need to obtain permission from the rights-holder(s) directly, unless additional rights are indicated by a Creative Commons license in the record and/ or on the work itself. This material has been accepted for inclusion by faculty at Illinois Wesleyan University. For more information, please contact digitalcommons@iwu.edu.

©Copyright is owned by the author of this document.

The International Perspective

Sevyn Liu, Theo Bantas, Veer Gulia, Cathy Peng

Overview

- ❑ Admissions and Recruitment
- ❑ Initial Stage Support
- ❑ International Student Issues
- ❑ Campus Resources



Romania



Number of international students on campus

Freshman Orientation and events

Campus services and support



Academic year 2013- 2014:

Number of applications last year:	3,796	(International: 490)*
Number accepted last year:	2,156	(International: 188)
New students:	571	(International: 49)

***Number of countries represented: 84**

Academic year 2014- 2015:

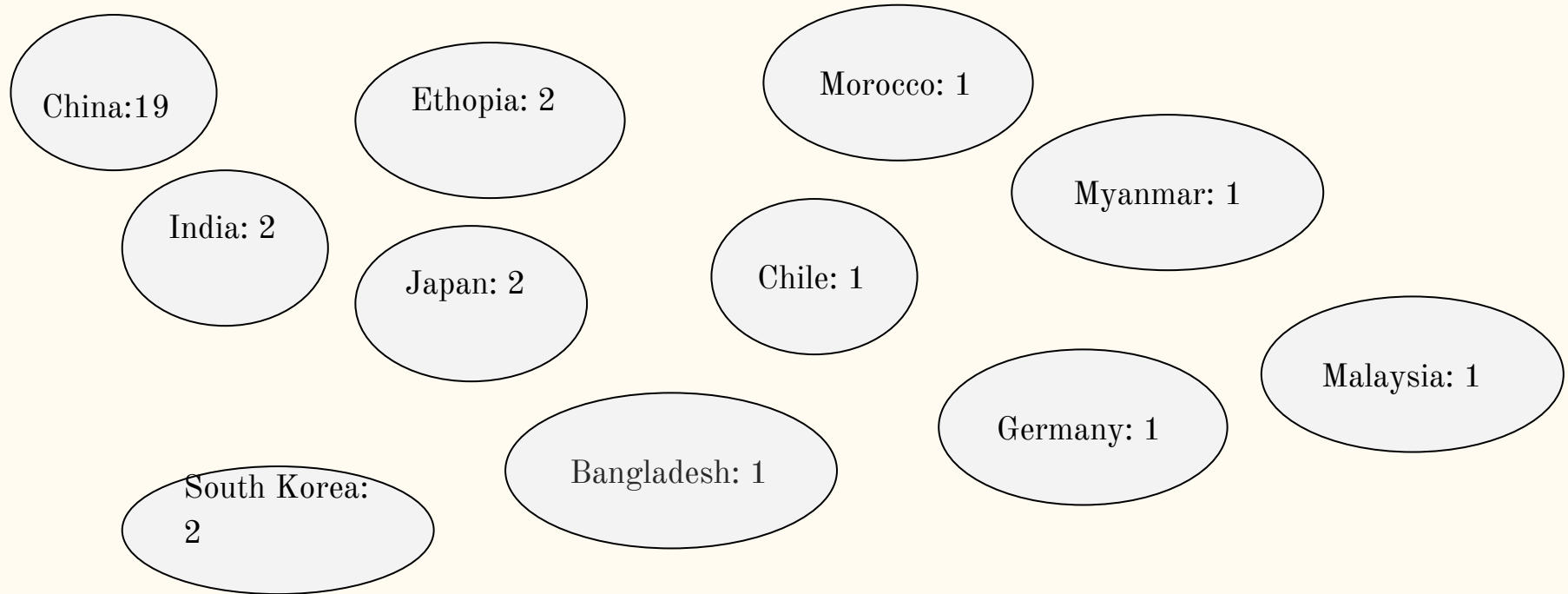
Number of applications last year:	3,599	(International: 551)*
Number accepted last year:	2,145	(International: 260)
New students:	506	(International: 76)

***Number of countries represented: 68**

Source: International
Admissions Profile

In 2016, we had 33 international students attend pre-Orientation. One extra student decided not to attend. Among these 34 students, 5 of them were exchange students.

Nationalities demographics :



Freshman Orientation and Events

❑ MALANA Pre-Orientation

(Multiracial, African-American, Latino-Hispanic, Asian-American and Native American students): introduces first-year students to our diverse community and connects them with returning students as well as students who are participating in International Orientation and Engaging Diversity Pre-Orientation.

❑ Summer Enrichment Program

❑ Titan Talk



Campus Resources



STUDENT RESOURCES





Initial Stage Support

What we have (but not limited to) that can be improved:

- ❑ Titan Talk - Encouragement and training and expansion
- ❑ Continuation - Event for Titan Talk Partners to meet up
- ❑ Events for professors
- ❑ IEW Essay Contest



17	Add lines 15 and 16. This is your total tax			17
18a	Federal income tax withheld from Form(s) W-2 and 1099-R	18a		
b	Federal income tax withheld from Form(s) 1042-S	18b		
19	<u>2017 estimated tax payments and amount applied from 2016 return</u>	19		
20	Credit for amount paid with Form 1040-C	20		
21	Add lines 18a through 20. These are your total payments			21

17	Add lines 15 and 16. This is your total tax			17
18a	Federal income tax withheld from Form(s) W-2 and 1099-R	18a		
b	Federal income tax withheld from Form(s) 1042-S	18b	0	
19	2016 estimated tax payments and amount applied from 2015 return	19	0	
20	Credit for amount paid with Form 1040-C	20	0	
21	Add lines 18a through 20. These are your total payments			21

Remember to staple a copy of your W-2(s) here.

Box 2 on your W-2, may be 0.

Did you earn more than \$259,400 in 2017? No, then don't worry about the Itemized Deductions Worksheet.

Line 19—2017 estimated tax payments. Enter any estimated federal income tax payments you made using Form 1040-ES (NR) for 2017. Include any overpayment that you applied to your 2017 estimated tax from:

- Your 2016 return, or
- An amended return (Form 1040X).

Suggestions

1. Have a legal representative
2. Hold OPT/CPT information sessions
3. Raise the awareness



Coming to a Liberal Arts University

- I imagined being free from any social stigmas
- A place which is genuinely very inclusive and diverse.
- Where the university makes sure to cater to the needs of all students.

Ideally

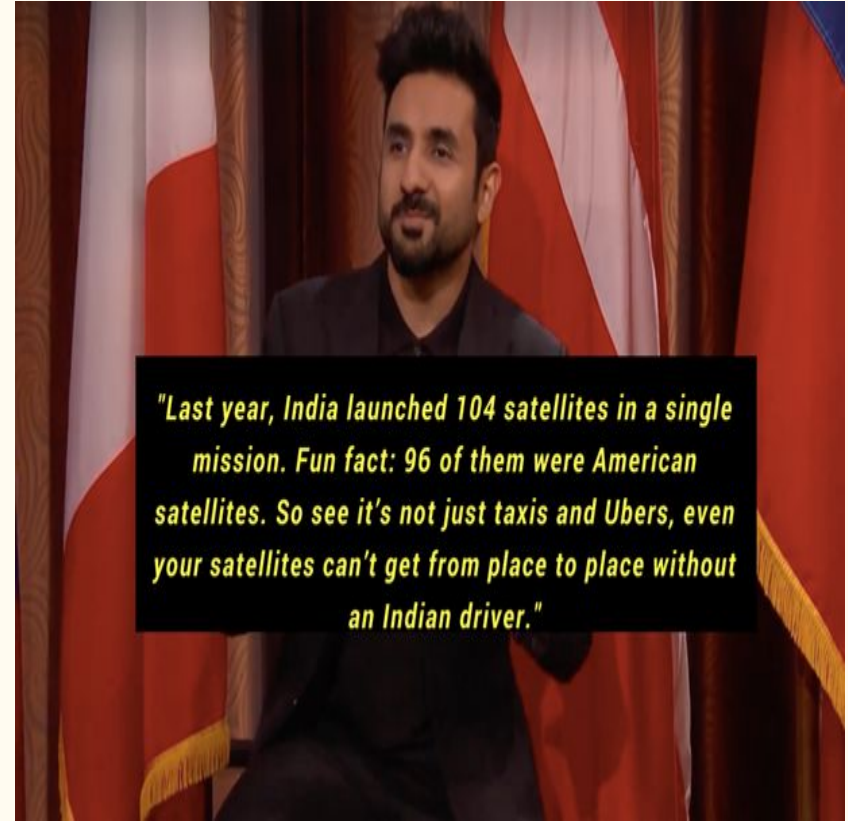
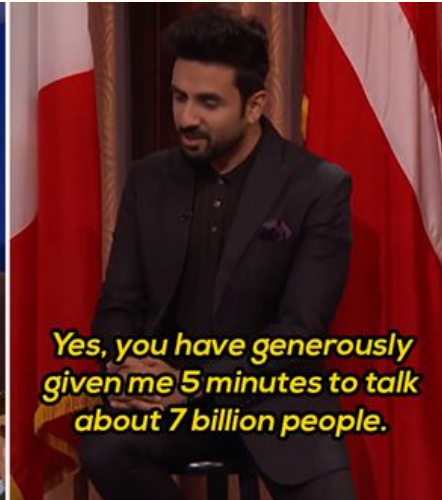


What it feels like..



FUN, LOW- PRESSURE EDUCATION ON (some?)GLOBAL AFFAIRS

- STAND UP COMEDY OR SUCH EVENT BY AN INTERNATIONAL
- DURING TURNING TITAN-30 MINUTES



Last but not least

We should not be painted under one brush, we are all unique.

We should not only be accepted into Wesleyan just to meet your diversity quotas.

We thank you for this opportunity.

Thanks for your time!