



Fall 9-23-1987

President's Convocation (1987 Program)

Illinois Wesleyan University

Follow this and additional works at: https://digitalcommons.iwu.edu/presidents_docs

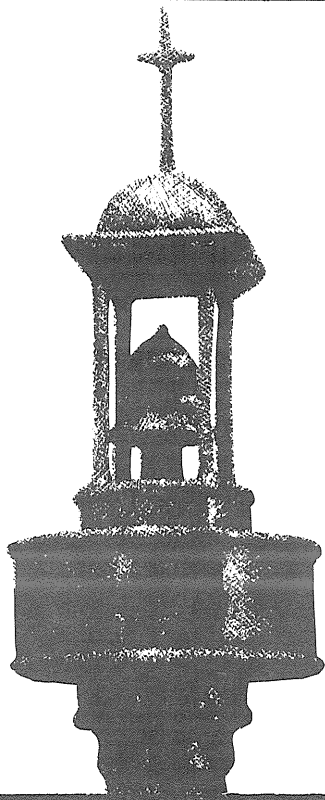
Recommended Citation

Wesleyan University, Illinois, "President's Convocation (1987 Program)" (1987). *President's Convocation*. 23.

https://digitalcommons.iwu.edu/presidents_docs/23

This Article is protected by copyright and/or related rights. It has been brought to you by Digital Commons @ IWU with permission from the rights-holder(s). You are free to use this material in any way that is permitted by the copyright and related rights legislation that applies to your use. For other uses you need to obtain permission from the rights-holder(s) directly, unless additional rights are indicated by a Creative Commons license in the record and/ or on the work itself. This material has been accepted for inclusion by faculty at Illinois Wesleyan University. For more information, please contact digitalcommons@iwu.edu.

©Copyright is owned by the author of this document.



Illinois Wesleyan University

PRESIDENT'S CONVOCATION

Westbrook Auditorium

Presser Hall

September 23, 1987

11:00 a.m.

- Organ Prelude Professor David Gehrenbeck, *Organist*
Tocatta in E, BWV 566 *Johann Sebastian Bach*
Partita on the Hymntune ST. ANNE *Paul Otto Manz*
- Invocation Chaplain William White
- Welcome President Wayne Anderson
"Our Responsibilities for This Year and Beyond" Kurt Bergland
President, Student Senate
- Special Music Professor Vadim Mazo, *Violin*
Preludium and Allegro *Fritz Kreisler*
Accompanist: Professor Robert Bankert, *Pianist*
- Presidential Scholars and
Anderson Physics Scholarship Dean Jerry M. Israel
- Awarding of Honorary Degree President Wayne Anderson
Provost Wendell W. Hess
- "By Trial and Error" Dr. Martin Marty
Fairfax M. Cone Distinguished Service Professor and
Professor of the History of Modern Christianity
University of Chicago Divinity School

Alma Wesleyan

From hearts aflame, our love we pledge to thee,
Where'er we wander, over land or sea;
Through time unending loyal we will be—
True to our Alma Mater, Wesleyan.

When college days are fully past and gone,
While life endures, from twilight dream till dawn.
Grandly thy soul shall with us linger on—
Star-crowned, our Alma Mater, Wesleyan!

- Organ Postlude Professor David Gehrenbeck, *Organist*
Improvisation on the Hymntune CWM RHONDDA *Paul Manz*

