



Fall 9-10-1986

President's Convocation (1986 Program)

Illinois Wesleyan University

Follow this and additional works at: https://digitalcommons.iwu.edu/presidents_docs

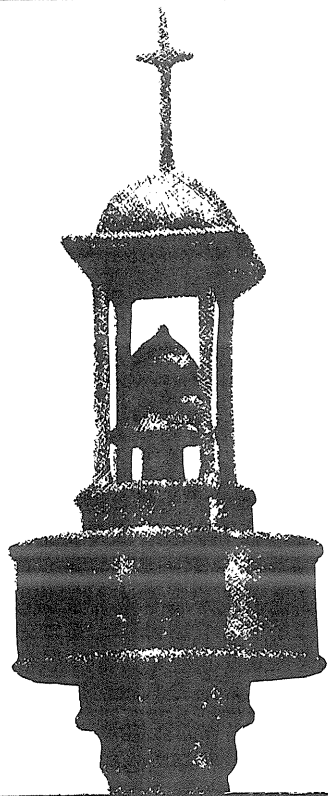
Recommended Citation

Wesleyan University, Illinois, "President's Convocation (1986 Program)" (1986). *President's Convocation*. 22.

https://digitalcommons.iwu.edu/presidents_docs/22

This Article is protected by copyright and/or related rights. It has been brought to you by Digital Commons @ IWU with permission from the rights-holder(s). You are free to use this material in any way that is permitted by the copyright and related rights legislation that applies to your use. For other uses you need to obtain permission from the rights-holder(s) directly, unless additional rights are indicated by a Creative Commons license in the record and/ or on the work itself. This material has been accepted for inclusion by faculty at Illinois Wesleyan University. For more information, please contact digitalcommons@iwu.edu.

©Copyright is owned by the author of this document.



Illinois Wesleyan University

PRESIDENT'S CONVOCATION

Westbrook Auditorium

Presser Hall

September 10, 1986

11:00 a.m.

Organ Prelude Professor David Gehrenbeck, *Organist*
Grand Choeur Dialogue *Eugene Gigout*

Invocation Sister Helen Carey
Order of St. Benedict

“Piecing Together the Old and the New” Jill Volk
President, Student Senate

Robert S. Eckley Professorship President Wayne Anderson

Special Music Professor Robert A. Kvam, *Tenor*
Professor C. Lawrence Campbell, *Accompanist*

I'll Sail Upon the Dog-Star
from *A Fool's Preferment* (1688) *Henry Purcell*

Wohin?
from *Die Schöne Mullerin*, Op. 25 *Franz Schubert*

“Freshman Class Profile” James R. Ruoti
Director of Admission

Presidential Scholars and
Anderson Physics Scholarship President Wayne Anderson

“From Rocky Top to Thunderhead—
Climbing to the Top” President Wayne Anderson

Alma Wesleyana

From hearts aflame, our love we pledge to thee,
Where'er we wander, over land or sea;
Through time unending loyal we will be—
True to our Alma Mater, Wesleyan.

When college days are fully past and gone,
While life endures, from twilight dream till dawn.
Grandly thy soul shall with us linger on—
Star-crowned, our Alma Mater, Wesleyan!

Organ Postlude Professor David Gehrenbeck, *Organist*
Fugue in G, BWV 577 *Johann Sebastian Bach*

