



Fall 9-7-1983

## President's Convocation (1983 Program)

Illinois Wesleyan University

Follow this and additional works at: [https://digitalcommons.iwu.edu/presidents\\_docs](https://digitalcommons.iwu.edu/presidents_docs)

---

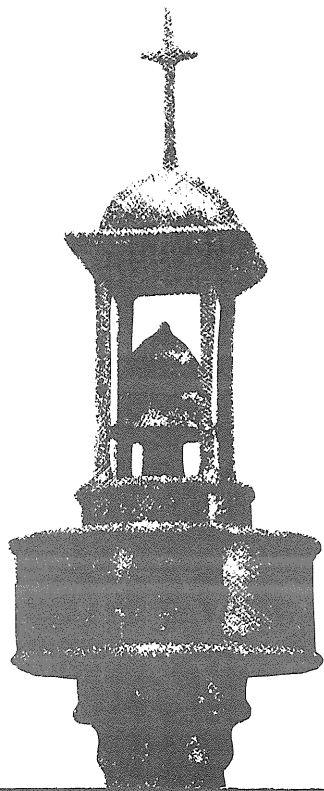
### Recommended Citation

Wesleyan University, Illinois, "President's Convocation (1983 Program)" (1983). *President's Convocation*. 19.

[https://digitalcommons.iwu.edu/presidents\\_docs/19](https://digitalcommons.iwu.edu/presidents_docs/19)

This Article is protected by copyright and/or related rights. It has been brought to you by Digital Commons @ IWU with permission from the rights-holder(s). You are free to use this material in any way that is permitted by the copyright and related rights legislation that applies to your use. For other uses you need to obtain permission from the rights-holder(s) directly, unless additional rights are indicated by a Creative Commons license in the record and/ or on the work itself. This material has been accepted for inclusion by faculty at Illinois Wesleyan University. For more information, please contact [digitalcommons@iwu.edu](mailto:digitalcommons@iwu.edu).

©Copyright is owned by the author of this document.



Illinois Wesleyan University

# PRESIDENT'S CONVOCATION

Westbrook Auditorium

Presser Hall

September 7, 1983

11:00 a.m.

Prelude . . . . . Professor David Gehrenbeck, *Organist*  
Fantasia on "Ein feste Burg ist unser Gott" (op. 27) . . . . . *Max Reger*  
(in honor of the quincentennial of the birth [November 10, 1483] of Dr. Martin Luther)

Invocation . . . . . Chaplain William L. White  
Having a Mid-Life Crisis at Illinois Wesleyan . . . . . Don Mizerk  
President, Student Senate

An Apple for/as the Teacher: The Role of the  
Computer in Education . . . . . Professor David N. Bailey

## Special Music

Sonata ("Appassionata") in F minor, Opus 57 . . . . *Ludwig van Beethoven*  
I. Allegro assai

Professor Lawrence Campbell, *Pianist*

"Cast a Cold Eye" . . . . . President Robert S. Eckley

## Alma Wesleyana

From hearts aflame, our love we pledge to thee,  
Where'er we wander, over land or sea;  
Through time unending loyal we will be—  
True to our Alma Mater, Wesleyan.

When college days are fully past and gone,  
While life endures, from twilight dream till dawn.  
Grandly thy soul shall with us linger on—  
Star-crowned, our Alma Mater, Wesleyan!

Postlude . . . . . Professor David Gehrenbeck, *Organist*  
Improvisation on the Welsh hymntune CWN RHONDDA . . . . . *Paul Manz*

