



Fall 9-9-1981

## President's Convocation (1981 Program)

Illinois Wesleyan University

Follow this and additional works at: [https://digitalcommons.iwu.edu/presidents\\_docs](https://digitalcommons.iwu.edu/presidents_docs)

---

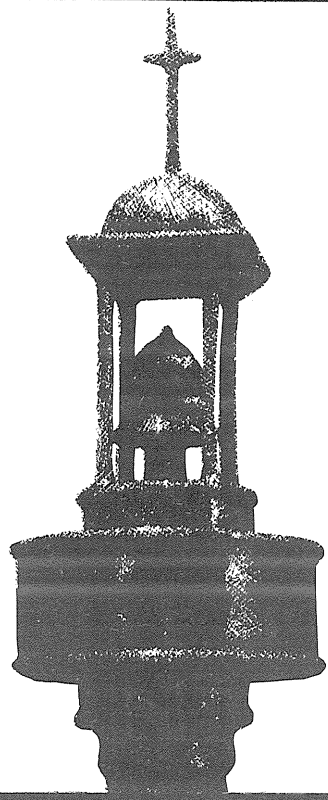
### Recommended Citation

Wesleyan University, Illinois, "President's Convocation (1981 Program)" (1981). *President's Convocation*. 17.

[https://digitalcommons.iwu.edu/presidents\\_docs/17](https://digitalcommons.iwu.edu/presidents_docs/17)

This Article is protected by copyright and/or related rights. It has been brought to you by Digital Commons @ IWU with permission from the rights-holder(s). You are free to use this material in any way that is permitted by the copyright and related rights legislation that applies to your use. For other uses you need to obtain permission from the rights-holder(s) directly, unless additional rights are indicated by a Creative Commons license in the record and/ or on the work itself. This material has been accepted for inclusion by faculty at Illinois Wesleyan University. For more information, please contact [digitalcommons@iwu.edu](mailto:digitalcommons@iwu.edu).

©Copyright is owned by the author of this document.



Illinois Wesleyan University

# PRESIDENT'S CONVOCATION

Westbrook Auditorium

Presser Hall

September 9, 1981

11:00 a.m.

Prelude.....Professor David Gehrenbeck, *Organist*

Sonata I: Allegro moderato, e serioso ..... *Felix Mendelssohn*

Invocation.....Chaplain William L. White

Special Music.....Rico McNeela, *violin*; Robert Luke, *cello*;

Lawrence Campbell, *piano*

Piano Trio in G, Opus 1, No. 2 .....*Ludwig von Beethoven*

The Liberal Arts Egg: A Lesson in Relevance.....Lynn Folsie

President, Student Senate

Everything is Beautiful at the Ballet,

or Whose Life is It, Anyway?.....Professor Carole Brandt

April is *Not* the Cruellest Month.....President Robert S. Eckley

Alma Wesleyana

From hearts aflame, our love we pledge to thee,

Where'er we wander, over land or sea;

Through time unending loyal we will be—

True to our Alma Mater, Wesleyan.

When college days are fully past and gone,

While life endures, from twilight dream till dawn,

Grandly thy soul shall with us linger on—

Star-crowned, our Alma Mater, Wesleyan!

Postlude .....Professor David Gehrenbeck, *Organist*

Sonata VI: Fuga..... *Felix Mendelssohn*

