



Spring 2012

## Theme and Variations for Solo Violin

Qingfan Jiang  
*Illinois Wesleyan University*

Follow this and additional works at: [https://digitalcommons.iwu.edu/music\\_compositions](https://digitalcommons.iwu.edu/music_compositions)

---

### Recommended Citation

Jiang, Qingfan, "Theme and Variations for Solo Violin" (2012). *Compositions*. 42.  
[https://digitalcommons.iwu.edu/music\\_compositions/42](https://digitalcommons.iwu.edu/music_compositions/42)

This Article is protected by copyright and/or related rights. It has been brought to you by Digital Commons @ IWU with permission from the rights-holder(s). You are free to use this material in any way that is permitted by the copyright and related rights legislation that applies to your use. For other uses you need to obtain permission from the rights-holder(s) directly, unless additional rights are indicated by a Creative Commons license in the record and/ or on the work itself. This material has been accepted for inclusion by faculty at Illinois Wesleyan University. For more information, please contact [digitalcommons@iwu.edu](mailto:digitalcommons@iwu.edu).

©Copyright is owned by the author of this document.

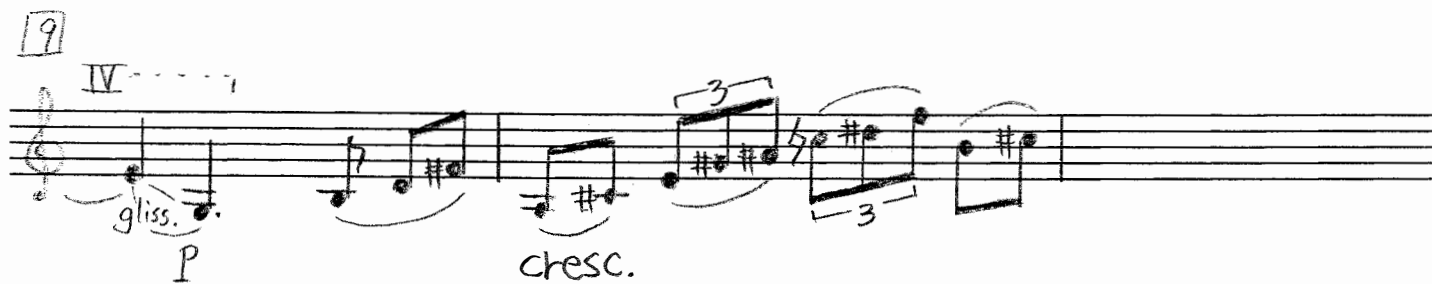
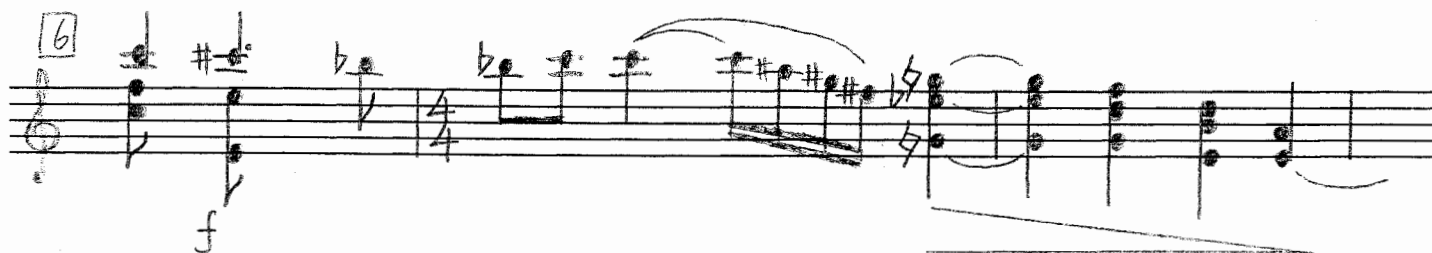
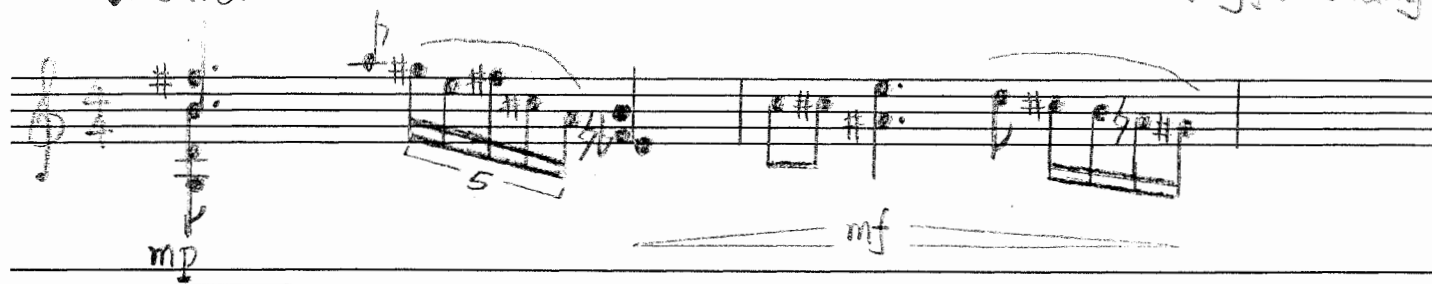
# Theme and Variations for Solo Violin

by Qingfan Jiang

♩=ca.60

# Theme

Qingfan Jiang



13

III gliss.

p

# Variation I

15

$\bullet = \text{ca. } 80$

mp

mf

17

II gliss.

p

19

p

mf

[21]

poco a poco cresc.

[23]

ff

[25]

f mf dim

II gliss.

[27]

p Rit.

II gliss.

[29]

senza vibrato

mf pp sub.

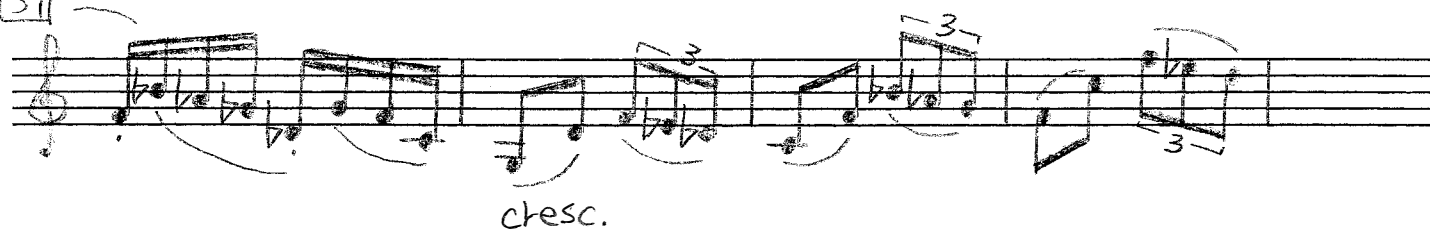
# Variation II

Qingfan Jiang

[31] ♩ = ca. 120



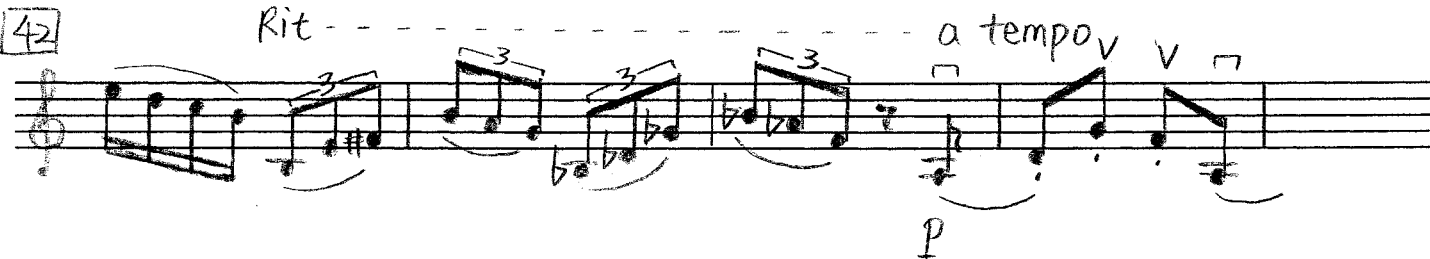
[34]



[38]



[42]



[46]



51

ff

56

dim.

59

p mf p mf cresc.

63

f

# Variation III

[65] ♩ = ca. 144 pizz. throughout.

Handwritten musical notation for measures 65-68. The notation is on a single staff in treble clef. Measure 65 starts with a piano (*p*) dynamic. Measure 66 has a sharp sign ( $\sharp$ ) above the first note. Measure 67 has a crescendo hairpin leading to a mezzo-forte (*mf*) dynamic. Measure 68 returns to a piano (*p*) dynamic.

Handwritten musical notation for measures 69-72. The notation is on a single staff in treble clef. Measure 69 has a mezzo-forte (*mf*) dynamic. Measure 70 has a mezzo-piano (*mp*) dynamic. Measures 71 and 72 continue the melodic line.

Handwritten musical notation for measures 73-76. The notation is on a single staff in treble clef. Measure 73 has a mezzo-forte (*mf*) dynamic. Measure 74 has a piano (*p*) dynamic. Measures 75 and 76 continue the melodic line.

Handwritten musical notation for measures 77-80. The notation is on a single staff in treble clef. Measure 77 has a sforzando (*sf*) dynamic. Measure 78 has a piano (*p*) dynamic. Measures 79 and 80 continue the melodic line.

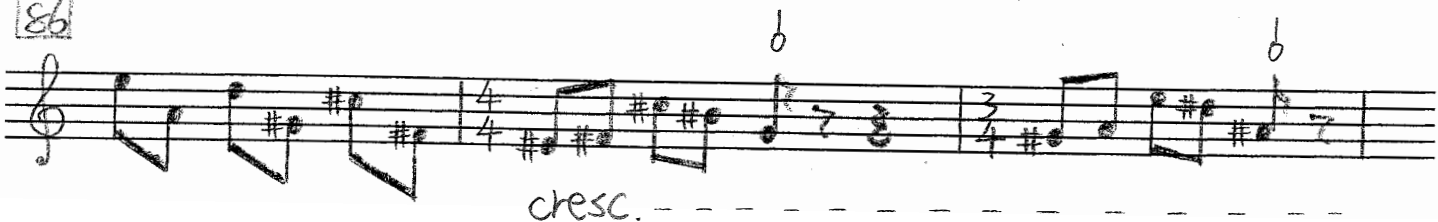
Handwritten musical notation for measures 81-84. The notation is on a single staff in treble clef. Measure 81 has a sforzando (*sf*) dynamic. Measure 82 has a piano (*p*) dynamic. Measure 83 has a brief dynamic marking. Measure 84 continues the melodic line.



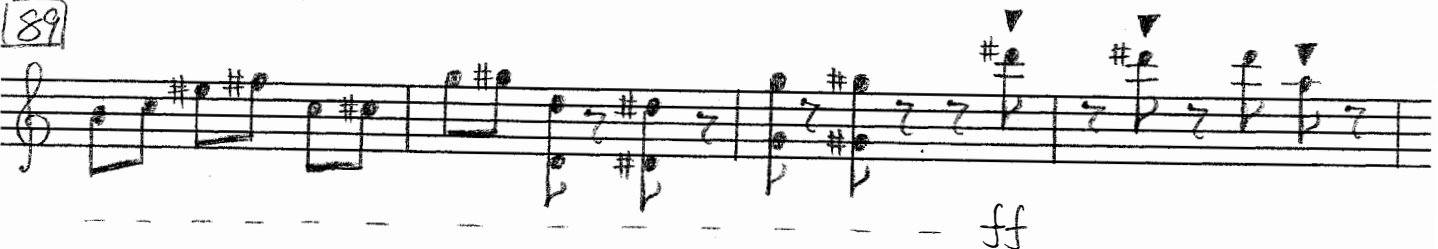
83



86



89



93



97



100

non rit.

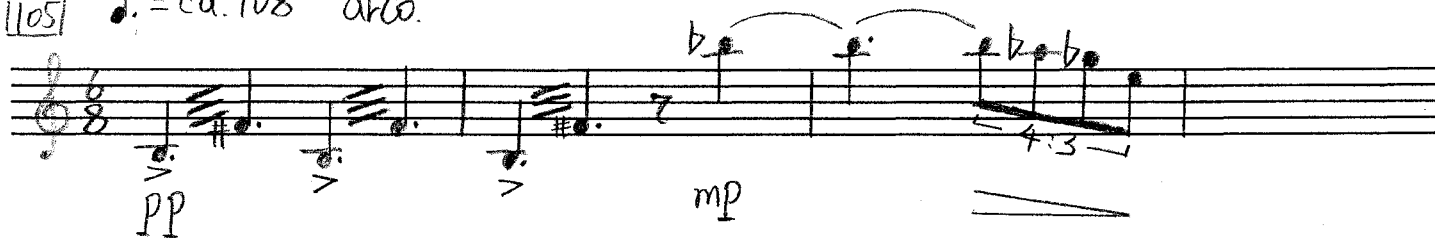


103

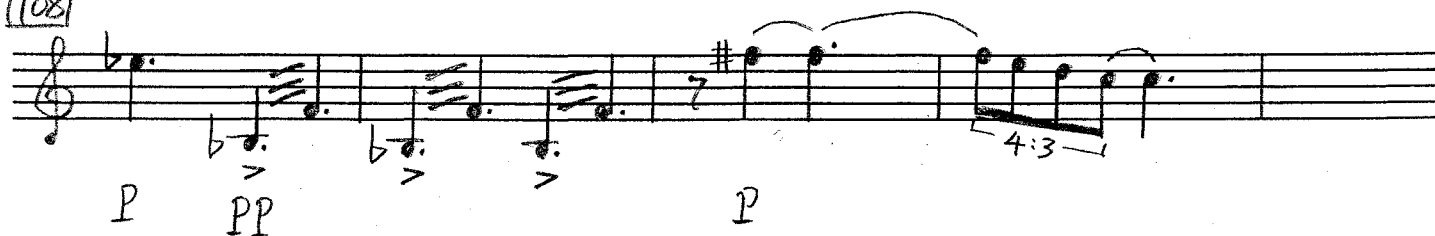


## Variation IV

105 ♩ = ca. 108 arco.



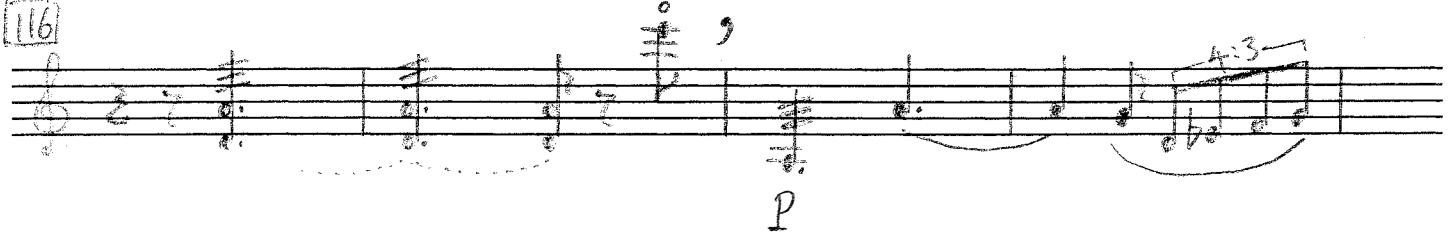
108



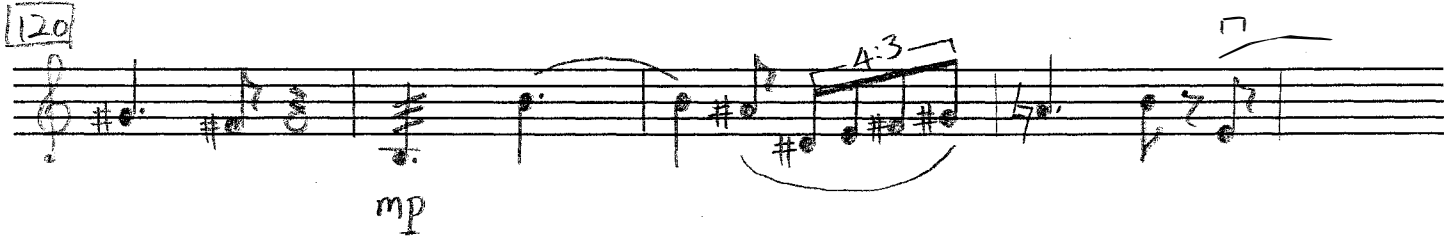
112



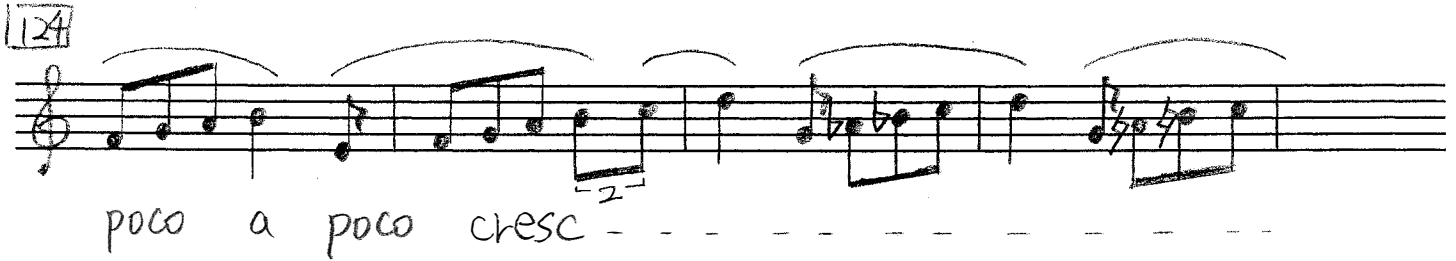
116



120



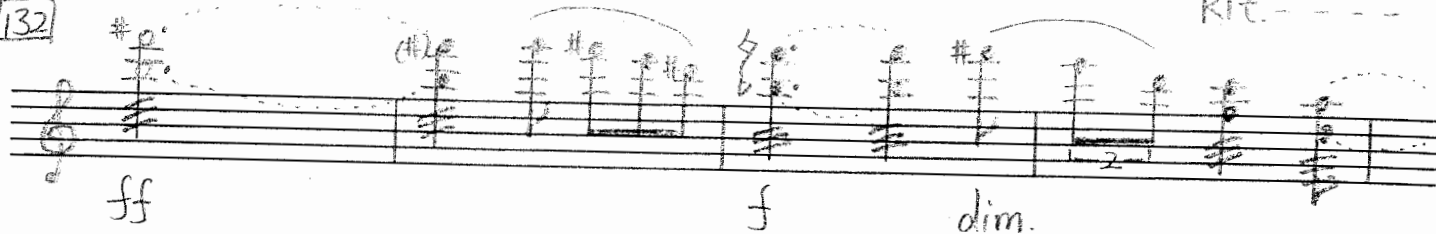
124



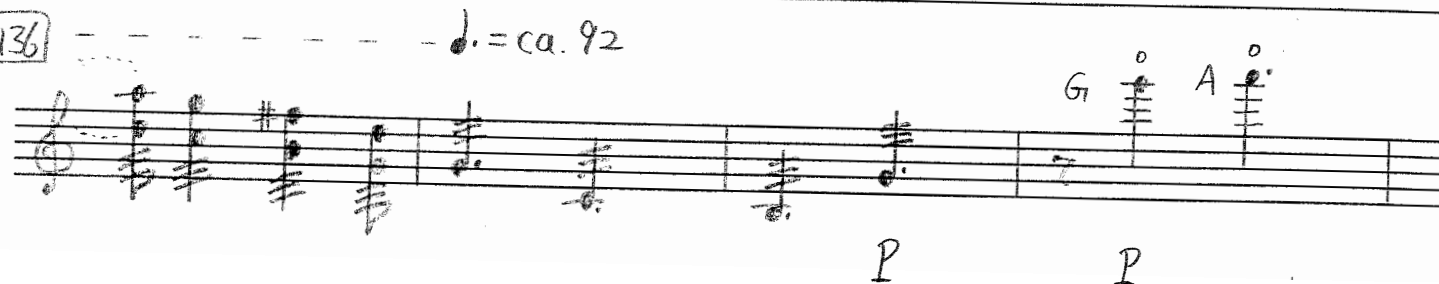
128



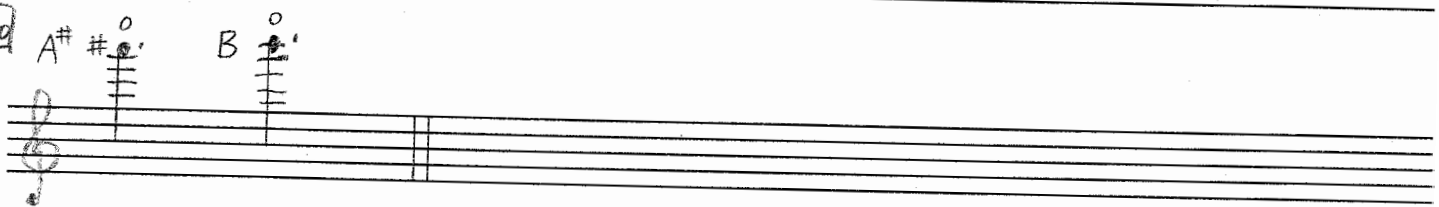
132



136

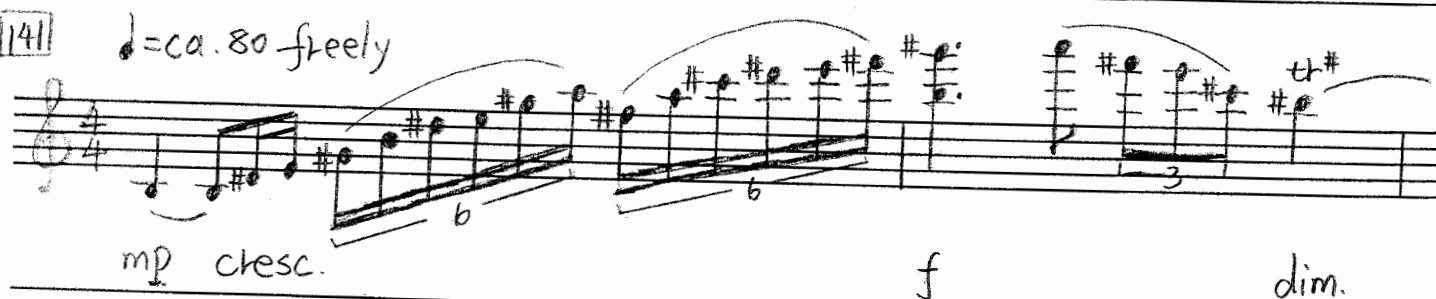


140



# Variation V

141



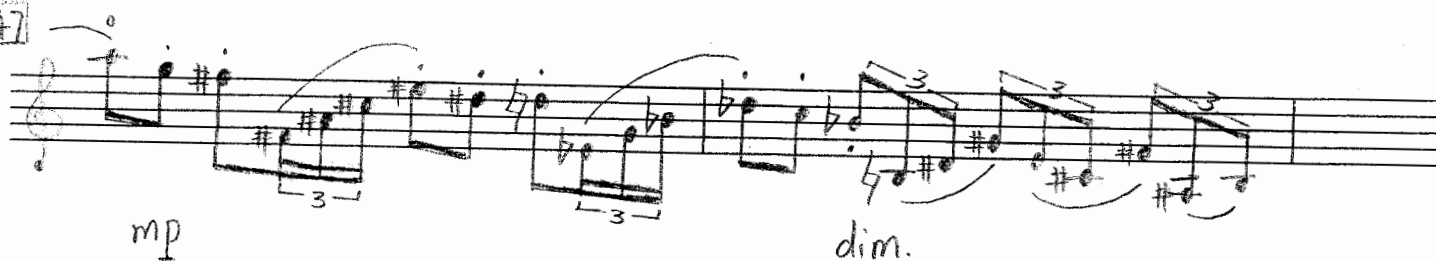
143



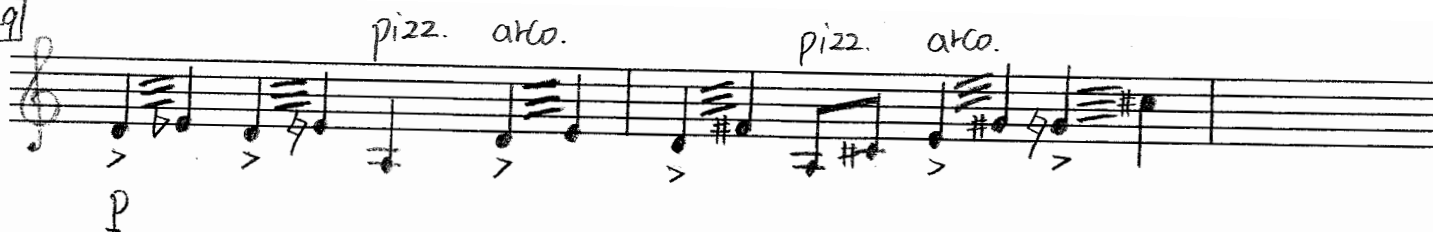
145



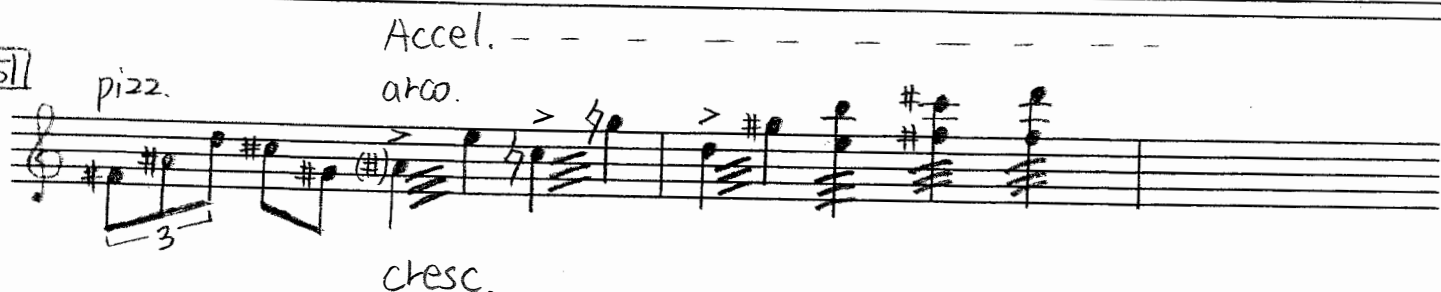
147



149



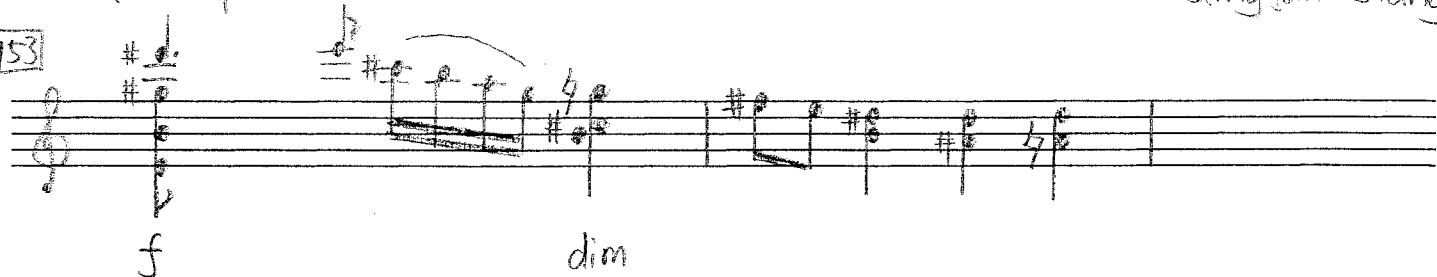
151



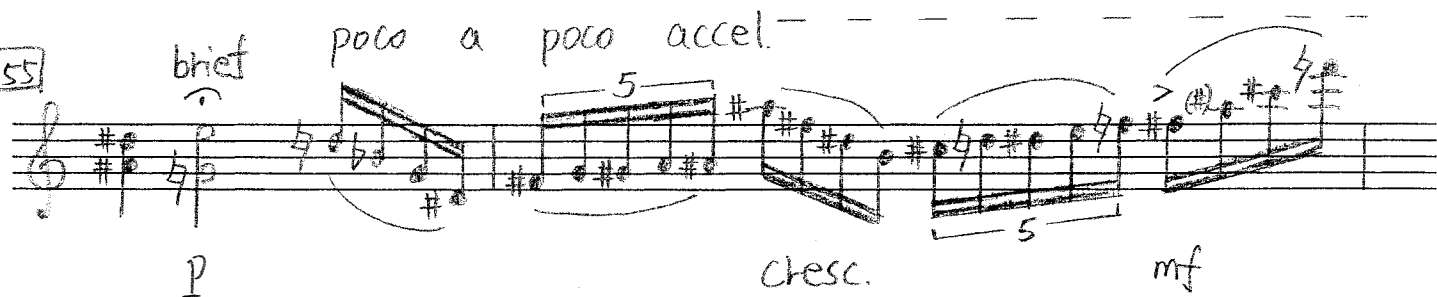
a tempo

Qingfan Jiang

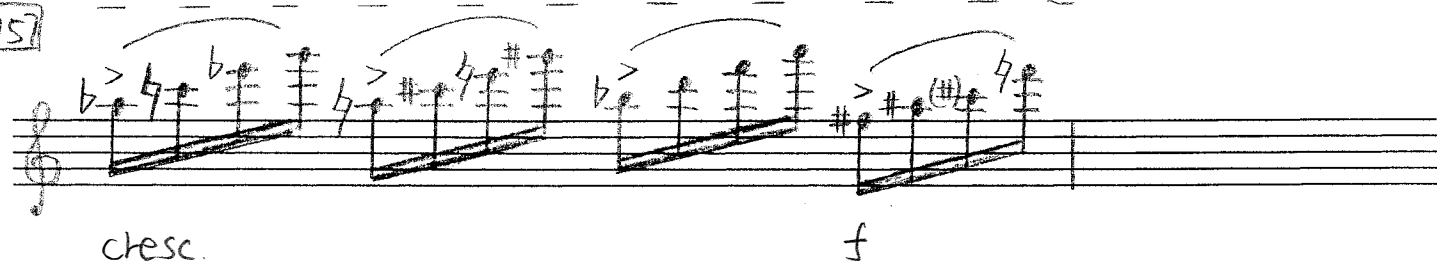
153



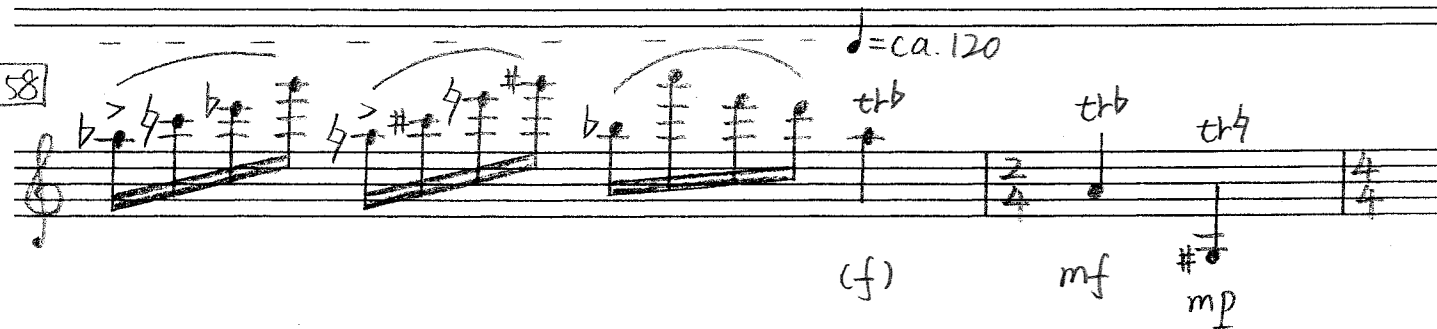
155



157



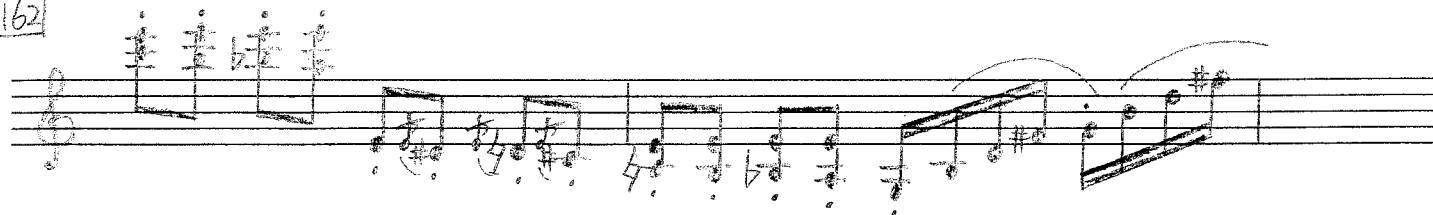
158



160

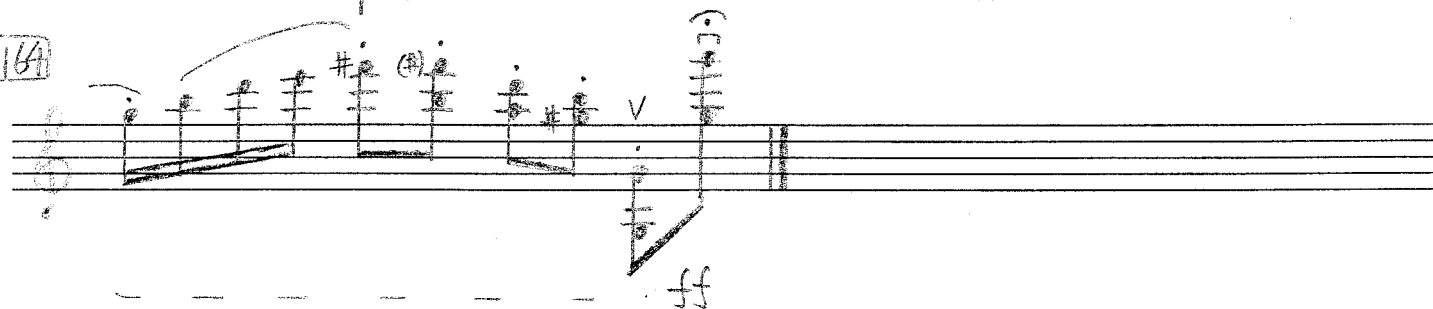


162



poco rit.

164



Total Duration: ca. 5 minutes