



Spring 5-3-2015

Commencement 2015 (Program and video)

Illinois Wesleyan University

Follow this and additional works at: https://digitalcommons.iwu.edu/commencement_docs

Recommended Citation

Illinois Wesleyan University, "Commencement 2015 (Program and video)" (2015).
Commencement. 62.

https://digitalcommons.iwu.edu/commencement_docs/62

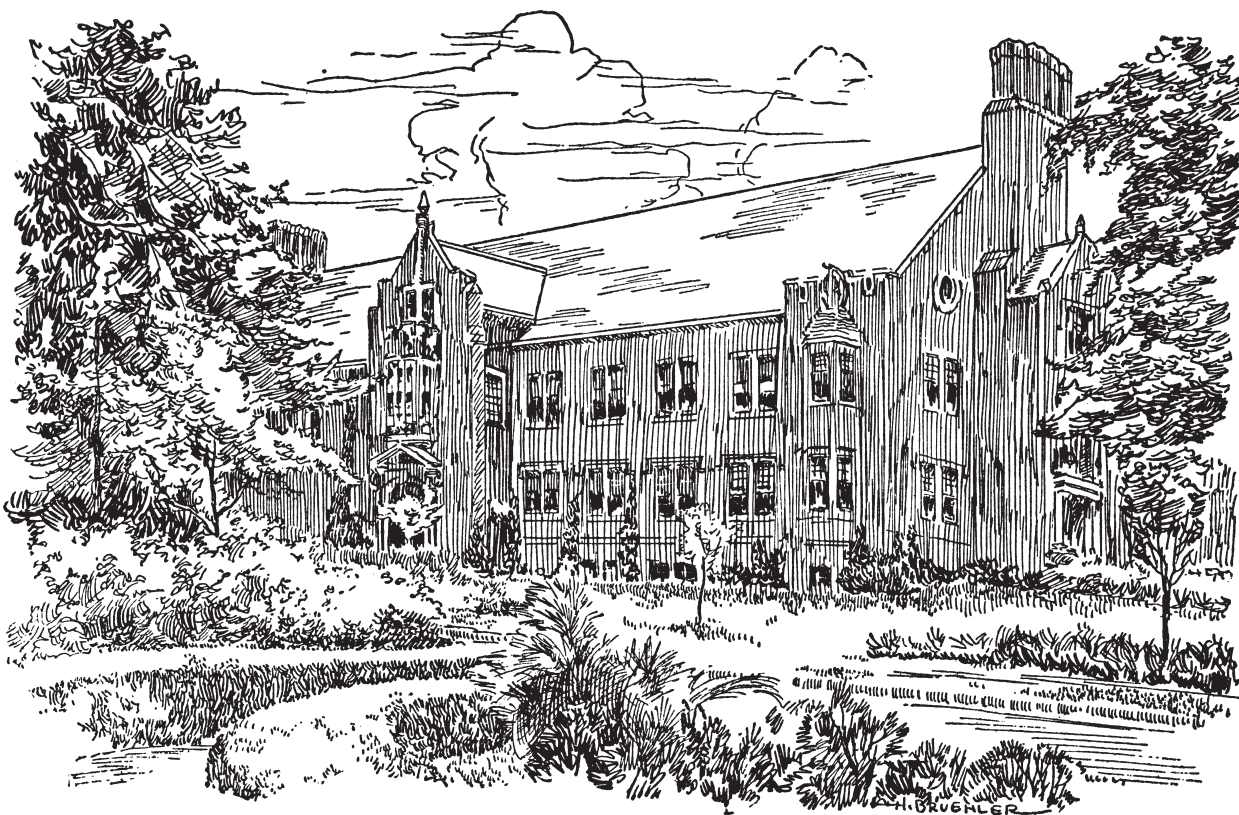
This Article is protected by copyright and/or related rights. It has been brought to you by Digital Commons @ IWU with permission from the rights-holder(s). You are free to use this material in any way that is permitted by the copyright and related rights legislation that applies to your use. For other uses you need to obtain permission from the rights-holder(s) directly, unless additional rights are indicated by a Creative Commons license in the record and/ or on the work itself. This material has been accepted for inclusion by faculty at Illinois Wesleyan University. For more information, please contact digitalcommons@iwu.edu.

©Copyright is owned by the author of this document.

Commencement

IN OUR *165th Year*

— 1850 — 2015 —



May 3, 2015

THE GLENN AND ROZANNE P. KEMP COMMENCEMENT PLAZA
AT STATE FARM HALL



ILLINOIS WESLEYAN
UNIVERSITY

COVER ILLUSTRATION: Presser Hall is home to the School of Music, which this year is celebrating its sesquicentennial anniversary. In 1925, the Theodore Presser Foundation provided a \$75,000 matching gift for the construction of a new music building. In 1930 the School of Music moved into its new Presser Hall home, which originally sat along University Avenue before the street was closed. Presser Hall houses the 550-seat Westbrook Auditorium, studios, practice rooms, classrooms, listening rooms and faculty offices.



Founded in 1850 by 30 civic and Methodist Church leaders, Illinois Wesleyan today is among the nation's leading private liberal arts institutions. Clinton W. Sears, was the University's first president and in 2004 Richard F. Wilson became Illinois Wesleyan's 18th chief executive. The 2015 Commencement will be President Wilson's final graduation ceremony, before retiring.

The University's first graduate was James H. Barger, son of founder Rev. John S. Barger, who received his bachelor of science degree July 3, 1853. Hannah I. Shur, the first woman to enroll at Illinois Wesleyan, earned her degree in 1872. In 1880, Gus A. Hill earned a degree from the former school of law, 13 years after the Board of Trustees invited enrollment of African-Americans. Two Japanese students, Y. Osawa and K. Tanaka, became the University's first international graduates in 1890.

The central portion of the University's 82-acre campus was acquired in 1854. Wesleyan's first building, Old North Hall, was erected in 1856 and served for 110 years before it was replaced by Sheean Library. In 2011, Sheean was razed and State Farm Hall now occupies this historic site.

Old Main, the second campus building, was built in 1870 and renamed Hedding Hall in 1931, after Illinois Wesleyan absorbed Hedding College during the Great Depression. The upper floors of Hedding Hall were destroyed by fire in 1943 with the ground floor, renamed Duration Hall, continuing as a classroom building until 1965. The Hedding College bell can be found atop a stone marker on the south end of the Eckley Quadrangle.

The Memorial Center, located on the west end of the quad, was dedicated in 1947 to Wesleyan men and women who served in World War II. The oldest building on campus is Stevenson Hall, which was built in 1910 as the University's first science building and now serves as home to the School of Nursing.

The Eckley Quadrangle, on which Commencement takes place, honors the University's 15th president, the late Robert S. Eckley, and his wife, Nell, who served from 1968 until 1986. Degrees are conferred on the Kemp Commencement Plaza named in honor of alumni Glenn '22 and Rozanne P. Kemp '27, whose family has had strong ties to the University for more than four generations.

Graduates of the Class of 2015 will join more than 21,000 Illinois Wesleyan alumni living in all 50 states, the District of Columbia and 52 countries around the world.

America The Beautiful

O beautiful for spacious skies,
For amber waves of grain,
For purple mountain majesties
Above the fruited plain!

America! America!
God shed his grace on thee,
And crown thy good with brotherhood
From sea to shining sea.

— *Katherine Lee Bates*
(1859-1929)

Alma Wesleyana

From hearts aflame our love we pledge to thee,
Where'er we wander over land or sea;
Through time unending loyal we will be —
True to our Alma Mater Wesleyan.

When college days are fully past and gone,
While life endures from twilight dream till dawn,
Grandly thy soul shall with us linger on —
Star-crowned our Alma Mater Wesleyan!

— *Professor W. E. Schultz*
(1887-1964)

Program

President Richard F. Wilson, Presiding
William B. Jaeckle, the 2014 Student Senate Professor of the Year, Mace Bearer

Prelude	Illinois Wesleyan Wind Ensemble Lev Ivanov, <i>Conductor and</i> <i>Visiting Assistant Professor of Music</i>	Awarding of Honorary Degree	Elizabeth A. Robb '78 President Wilson Provost Green Mr. Vinyard
Music For a Festival	<i>Gordon Jacob</i>	Address	Judge Robb
Overture	(1895-1984)	"The Power of Connection"	
Intrada			
Processional (please stand)		Conferring of Degrees	President Wilson
Crown Imperial	<i>William Walton</i> (1902-1983) <i>arr. W.J. Duthoit</i>		Karla Carney-Hall <i>Vice President for Student Affairs / Dean of Students</i>
Pomp and Circumstance	<i>Edward Elgar</i> (1857-1934)		Leslie Betz '93 <i>Registrar</i>
"America The Beautiful"	Natalie J. Howard '15	Bachelor of Science	Victoria N. Folse '86
(please remain standing	MATERNA	in Nursing	<i>Associate Professor and</i>
and join in singing)	<i>Samuel A. Ward</i> (1848-1903)		<i>Director of the School of Nursing</i>
Invocation	Elyse Nelson Winger	Bachelor of Fine Arts	Kevin J. Strandberg
(remain standing)	<i>University Chaplain</i>	<i>Professor and Director of the School of Art</i>	
President's Welcome	Richard F. Wilson		Curtis C. Trout
	<i>President</i>	Bachelor of Music and	Mario J. Pelusi
		Bachelor of Music Education	<i>Professor and</i>
			<i>Director of the School of Music</i>
Trustee Greetings	George A. Vinyard '71	Bachelor of Arts and	Provost Green
	<i>Chair, Board of Trustees</i>	Bachelor of Science	
Remarks of Class President	Sneha Subramanian '15		
Faculty Reflections	R. Given Harper	Closing Remarks	President Wilson
	<i>George C. and Ella Beach Lewis</i>	Alma Wesleyana	Ms. Howard
	<i>Endowed Chair of Biology</i>	(please stand and	NATIONAL HYMN
	<i>The 2015 Student Senate Professor of the Year</i>	join in singing)	<i>George William Warren</i> (1828-1902) <i>arr. Peter Andrew Gilbert '98</i>
Investiture of Endowed Professors			
Irving Epstein	President Wilson	Recessional (remain standing)	Illinois Wesleyan
Gordon J. Horwitz	Mr. Vinyard		Wind Ensemble
James W. Plath	Jonathan D. Green	Procession of the Nobles	<i>Nicolai Rimsky-Korsakov</i> (1844-1908) <i>arr. Erik W.G. Leidzén</i>
	<i>Provost / Dean of the Faculty</i>		
Announcement of Honors	President Wilson		

Please turn off cell phones. Remain seated until all graduates have exited.



Commencement Speaker

The Honorable Elizabeth Robb '78

Chief Circuit Judge, Eleventh Judicial Circuit (Retired)

Recently retired Chief Circuit Judge Elizabeth Robb, Class of 1978, is the first woman to have served as associate judge, circuit judge and chief judge of the Eleventh Judicial Circuit, serving Ford, Livingstone, Logan, McLean and Woodford counties in Illinois.

Appointed to the bench in 1993, Judge Robb served as chief judge for 10 years until her retirement in December 2014. Her pioneering approach to justice has included many innovative programs such as co-founding and chairing the McLean Criminal Justice Coordinating Council, which collaborates with Criminal Justice Partners to improve the criminal justice system in McLean County; obtaining federal and county funding for the creation of the McLean County Drug Court in 2006 and the McLean County Recovery Court in 2010 for defendants with a mental illness; developing the Juvenile Redeploy Illinois program for juvenile offenders; and instituting a pilot program in 2013 for extended media coverage in the courtroom.

In 2008, Judge Robb was elected as Vice Chair of the Conference of Chief Judges, a position she held for six years. She was elected to serve as the first woman Chair of the Conference in 2014. She previously served for nine years on the Illinois Judicial Conference, which suggests improvements to the administration of justice in the state. Judge Robb's many judicial appointments included serving as chair of the Judicial Mentor Committee, which oversees the New Judge Mentor Program and the Peer Judge Mentor Program.

Judge Robb remains active in the criminal justice system. She was recently named to serve on the Illinois State Commission on Criminal Justice and Sentencing Reform, a panel charged with making recommendations to reduce the state's prison population. This statewide panel echoes the local efforts of McLean County's Criminal Justice Coordinating Council. She was also named by Governor Bruce Rauner to serve as the Chair of the Board of the Illinois Criminal Justice Information Authority.

Other current judicial appointments include service on the Illinois Courts' Language Access Advisory Board, member of the ARDC Committee on Character & Fitness, the Juvenile Justice Leadership Council, the Special Supreme Court Advisory Committee for Justice and Mental Health Planning, and Advisory Board of the Illinois Center for Excellence for Behavioral Health and Justice.

A native of Macomb, Illinois, Judge Robb graduated magna cum laude from Illinois Wesleyan in 1978 with a bachelor of arts degree. She earned her law degree from Loyola University in Chicago in 1981. She practiced law in Bloomington for 11 years before becoming associate circuit judge in 1993.

While a judge, she provided internship and mock trial opportunities to Illinois Wesleyan students for more than 20 years. Judge Robb also taught business law for several years as an adjunct faculty member at both Illinois Wesleyan and at Illinois State University. In 2012, Illinois Wesleyan honored Judge Robb as the recipient of the Distinguished Alumna Award for her contributions to society, professional distinction and civic leadership.

Today, we welcome and honor our alumna Judge Elizabeth Robb for her commitment to innovative approaches to justice in the Eleventh Judicial Circuit and throughout the state of Illinois.

Academic Distinctions

Students with excellent final cumulative grade point averages are recognized as:

Summa Cum Laude—with highest honor—3.90 GPA or higher

Magna Cum Laude—with great honor—3.70 GPA or higher

Cum Laude—with honor—3.50 GPA or higher

National Honor Societies

Illinois Wesleyan students are eligible for membership in the nation's two best-known honor societies, Phi Beta Kappa and Phi Kappa Phi. For both societies, eligibility is limited to those students whose academic performance places them in the top 10 percent of their class during their junior or senior year.

ΦBK, Phi Beta Kappa was founded at the College of William and Mary in 1776. It is the nation's oldest national academic honorary society. The society's motto, "Love of learning is the guide of life," represents the society's commitment to the liberal arts and sciences. Now found on 300 college and university campuses, the Illinois Wesleyan chapter was granted a charter in 2001.

ΦKΦ, Phi Kappa Phi was founded at the University of Maine in 1897 and is the oldest all-discipline academic honor society. The society's mission is "to recognize and promote academic excellence in all fields of higher education and to engage the community of scholars in service to others." With chapters on over 300 campuses, the Illinois Wesleyan chapter was chartered in 1922.

Commencement Honors

The Hope Ellen Pape President's Club Award in the Fine Arts is awarded for outstanding accomplishment in Art or Music or Theatre Arts.

The Annabelle Scrogin Anderson '36 Award recognizes distinguished achievement in multiple fields of study.

The John L. Clark Award in Literary Studies honors outstanding academic performance, particularly in historical and theory courses, and evidenced by scholarly ability and participation in the creative activities of the School of Theatre Arts.

The Nikki Kaye Pape President's Club Award for Excellence in Writing is presented for the best selection of writing prepared during the academic year.

The Professor David Bailey Prize in Chemistry honors outstanding achievement in the field of chemistry.

The Harold C. Hodge President's Club Award in Natural Science and Mathematics salutes outstanding achievement in the natural sciences and mathematics.

The Donald R. Koehn Memorial Award is presented for outstanding achievement in the humanities.

The Robert S. Eckley President's Club Award in Social Science recognizes outstanding achievement in the social sciences.

The Caroline F. Rupert Nursing Award salutes outstanding work during four years of undergraduate study in nursing.

The Katherine Riedelbauch Baker Music Award recognizes superiority in general musicianship, including theoretical and historical fields.

The Hester Merwin Ayers Art Achievement Award honors outstanding achievement during four years of undergraduate study in art.

The William T. Beadles Award for Exceptional Achievement in Business Administration recognizes exceptional scholarly accomplishments and professional promise.

The Phi Kappa Phi Award recognizes an outstanding senior student member with exceptional promise for graduate or professional study.

The Jack C. Fields Prize for Excellence in Accounting is presented for exceptional achievement in the study of accounting.

The Larry Shue Drama Award recognizes outstanding potential as a professional artist of the theatre.

Graduation with Research Honors

- Kathryn V. Bulandr, *Psychology*
Anxiety Sensitivity, Stress, and Problematic Drinking Behaviors Among College Students
Project Advisor: Marie Nebel-Schwalm
- Stephanie L. Carlson, *History*
Conflicting Perspectives: Chivalry in Twelfth-Century Historiography
Project Advisor: Michael Young
- Dominique Castle, *International Studies*
Between History and Fiction: Visualizing Contemporary Polish Cultural Identity
Project Advisor: Marina Balina
- Nathan Douglas, *Hispanic Studies*
“Unos seres nacen para vivir” Un análisis psicosocial de *Nada*
Project Advisor: Carmela Ferradans
- Hannah Eby, *Music*
“O! My Son”: Musical Interpretations of a Father’s Grief in the Age of Jacobean Rhetoric
Project Advisor: Adriana Ponce
- Ethan Fischer, *Psychology*
Do Dogs Experience Cognitive Dissonance?
Project Advisor: Ellen Furlong
- Katherine E. Ford, *Psychology*
Domestic Dogs’ (*Canis lupus familiaris*) Evaluation of Moral and Immoral Actors
Project Advisor: Ellen Furlong
- Nikki M. Greenhill, *Psychology*
Examining Whether Body Image Dissatisfaction is a Predictor of Risky Sexual Behavior
Project Advisor: Marie Nebel-Schwalm
- Casie L. Henrikson, *Psychology*
The Impact of Dexamethasone on Behavioral Development in Larval Zebrafish (*Danio rerio*)
Project Advisor: Brad Sheese
- Natalie Hoijer, *Music*
Unleashing Music’s Hidden Blueprint
Project Advisor: Mario Pelusi
- Ryan Holden, *Psychology*
The Effects of Good Limb Training on the Corpus Callosum in C57BL/6 Mice
Project Advisor: Abigail Kerr
- Ene Ikpebe, *Economics*
Economic Analysis of the Labor Market Experience of African Immigrants in the U.S.
Project Advisor: Michael Seeborg
- Michael Kistner, *Political Science*
Explaining Legislative Productivity: Evaluating the Effects of Polarization and Divided Government in a Cross-sectional Study of State Legislatures
Project Advisor: Greg Shaw
- Luke J. McLaughlin, *Music Illinois*
Project Advisor: Daniel Swilley
- Colleen Melone, *Greek and Roman Studies*
Pushing the Limit: An Analysis of the Women of the Severan Dynasty
Project Advisor: Amanda Coles
- Sarah Menke, *Theatre*
Your Story Matters: Theatre for Community in Practice with the Boys and Girls Club of Bloomington-Normal
Project Advisor: Thomas Quinn
- Luke Mueller, *History*
Defying the United States — General Douglas MacArthur
Project Advisor: Michael Weis
- Tung Nguyen, *Mathematics*
Construction of Spline Type Orthogonal Scaling Functions and Wavelets
Project Advisor: Tian-Xiao He
- Tung Nguyen, *Economics*
Intra-regional Currency Linkages and the Evolution of Exchange Rate Regime of the ASEAN Region
Project Advisor: Amit Ghosh
- Thomas Simmons, *Mathematics*
A Computational Study of Icart’s Function
Project Advisor: Andrew Shallue
- Laura Steenberge, *Chemistry*
Synthesis and Screen of a Proline-Rich Combinatorial Library Towards the Identification of Sickle Cell Hemoglobin Polymerization Inhibitors
Project Advisor: Brian Brennan
- Ashley M. Tegge, *Nursing*
Levels of Empathy in Undergraduate Healthcare Professions Students
Project Advisor: Noël Kerr

Daniel Truesdale, *Economics*

Compensated Cadaver Organ Donation: Will a Small Fee Waiver Work?

Project Advisor: Craig Broadbent

Kimberly Wenger Diller, *Mathematics*

Two Rosa-type Labelings of Uniform k-distant Trees and a New Class of Trees

Project Advisor: Daniel Roberts

Michael Wettengel, *English*

Landfall

Project Advisor: Michael Theune

Jessica M. White, *Psychology*

Neural Effects of Varying Levels of Social Re-Inclusion After Varying Periods of Social Exclusion

Project Advisor: Jason Themanson

Academic Colors and Regalia

Like judicial robes, the garments worn on academic occasions such as today's Commencement derive from the ecclesiastical garb of medieval England. The scholar in the Middle Ages, it must be remembered, was a clerk, and therefore required to wear the clerical gown and tonsure. Certainly, at Oxford and Cambridge, at least in the earliest times, the robes were monastic in origin, although the hood was adapted from a lay garment common to both sexes and all classes.

As early as the fourteenth Century, scholars of certain colleges were required by statute to wear "a decent habit" befitting a clerk and no evidence appears that there was much differentiation among undergraduates, bachelor's, master's, and doctoral robes. All were black, commonly of lamb's wool; most were fur-lined for warmth or at least fur trimmed; and the only mark of difference was in the fuller cut and ankle length of the master's gown. The cope, or closed cape, was also black and followed the style of the everyday mantle of the clergy.

Hoods were worn by all and probably had no academical significance at the beginning. By 1330–40 doctors began to adopt scarlet for their hoods, and by 1500, for their robes, with black retained by the masters of arts and bachelors of divinity. An act of Henry VIII in 1533 ratified the wearing of robes of other colors. Hoods were lined with silk and miniver fur, a custom surviving until the late seventeenth Century, but over the years distinctions were created to identify the various ranks and faculties.

Caps evolved in similar manner. The round velvet cap is still worn today in the full dress of doctors (except doctors in theology); the familiar square, or mortar-board, was copied in the early sixteenth Century from the thirteenth Century cap of the University of Paris. A third style also derives from Paris: a squared cap made by sewing four pieces of cloth with seams producing ridged edges, seen in modern times in the biretta of the clergy and the squared velvet cap of doctors of theology. The "who" and "how" of the wearing of caps produced numerous rulings, restrictions, and change.

The Reformation repressed the brilliant silks, gold lace, costly furs, and extravagant cut of academic robes, and the sober and more uniform styles are for the most part what we see today.

However, *the growth* of higher education in the United States during the nineteenth Century, when the great land grant colleges and universities were established under the Morrill Act, created a confusion of conflicting styles and colors. The easy identification of one's academic status by means of cut, fabric, and color was no longer true.

In 1893 an intercollegiate commission presented a uniform code for caps, gowns, and hoods to be worn in the United States. The mortarboard caps are the same for doctoral, master's, and baccalaureate degrees, except that doctors' caps may be of velvet and may have a gold tassel. The bachelor's gown is marked by pointed sleeves, reaching to the knee, while the master's sleeve is squared at the ends, and longer. The doctoral robe is fullest, with rounded bell shaped sleeves marked by three velvet stripes.

The greatest symbolism of the academic costume is borne by the hood, which identifies the level of the degree, the faculty (or department of learning) in which it was earned, and the institution which awarded it. The size of the hood, its shape, and the width of its velvet trim identify the level of the degree, with doctoral hoods naturally being the fullest, widest, and longest. Faculty colors tell us the department.

Today's graduates will be wearing white for the College of Liberal Arts, pink for the School of Music, apricot for the School of Nursing, golden yellow for the sciences, and brown for the fine arts. Faculty members in the processional may be wearing light blue for education, copper for economics, drab for business and accountancy, orange for engineering, purple for law, lemon for library science, green for medicine, apricot for nursing, dark blue for philosophy, sage green for physical sciences, cream for social sciences, and scarlet for theology, among the many available. The colors are mandatory on hoods, but may also be used on the tassels and/or the velvet on doctoral gowns.

The university or college is usually identified by the color of the hood lining. Two colors are frequently used, since there are approximately 2,000 degree-granting institutions in the United States. A few, such as Harvard, Yale, Princeton, and the University of Chicago, use a single color. Illinois Wesleyan's green and white was adopted in 1888.

The Illinois Wesleyan University Mace, first carried at the 1969 inauguration of Dr. Robert S. Eckley as fifteenth president of the University, is also a striking symbol of the institution. Made of bronze for power and endurance and of walnut for organic strength, its cupola represents the bell tower of Old North Hall, Illinois Wesleyan's first building, which was erected in 1856. Old North was demolished in 1966 to make way for Sheean Library and State Farm Hall now occupies this historic site. The bell suggests the Hedding Bell, a campus landmark since 1931, when it was installed on the IWU campus after Hedding College was absorbed by the University during the Great Depression. The staff of the Mace is made from the walnut of Old North Hall, and the names of Illinois Wesleyan's presidents are engraved on its bronze base.

The School of Nursing

Candidates for the degree

BACHELOR OF SCIENCE IN NURSING

David Porter Allen

Emily Alyse Anderson

Elise Louise April

Alexandra Nicole Bantz

Collin Patrick Barr

Ahnalieza Marie Brill, *Summa Cum Laude*

Lauren Ashley Casey, *Cum Laude*

Megan C. DeLong

Megan Marie Dickey

Amanda Lynn Frank

Carole Jean Guffey

Kayla Marie Hanes

Jordan Marie Hartness

Abigail Kathryn Hertz

Emily Diane Johnson

Samantha Rose Lenckos

Holly Lind

Gisel Lopez

Cydnee Ellen Mann

Madalyn Joy Mazur

Shannen Rose McCrory, *Magna Cum Laude*

Alison Ann Novakow

Callie Gabrielle Phipps

Lillian Morgan Poe

Anna Pogue

Daisy Sajuan

Natalie Marie Statham

Alexandria Marie Stevenson

Rachael Kathryn Stevenson

Jane Karen Swafford

Ashley M. Tegge, *Cum Laude*

Sarah Nicole Van Zee

College of Fine Arts

Candidates for the degree

BACHELOR OF FINE ARTS

ART

Maria May Emmons

Eric Novak

THEATRE ARTS

Sydney Anne Achler, *Theatre Design and Technology, Magna Cum Laude*

Elizabeth Anne Albers, *Acting, Summa Cum Laude*

Brittany Caroline Ambler, *Music Theatre, Cum Laude*

Nicholas Walter John Day Carlson, *Theatre Design and Technology*

Nicholas Castellanos, *Acting, Cum Laude*

Casey C. Cudmore, *Acting*

Paige Amy Kinnamon, *Theatre Design and Technology, Magna Cum Laude*

Jordan Wayne Lipes, *Music Theatre*

Debra Anne Madans, *Acting*

Alexandra Janai Meek, *Theatre Design and Technology*

Priscilla Ashley Moy, *Acting*

Halimah Consuelo Nurullah, *Music Theatre*

Heather Lei Ann Priedhorsky, *Music Theatre, Cum Laude*

Ian Fields Stewart, *Music Theatre, Cum Laude*

Aaron Harris Woodstein, *Theatre Design and Technology*

Candidates for the degree

BACHELOR OF MUSIC

Ethan Benjamin Berg

Nora DuComb Buckingham, *Cum Laude*

Rebecca Marie Buechel, *Cum Laude*

John Paul Cossio

William Chambers Greenlee

Olivia Christine Hoff, *Magna Cum Laude*

Natalie Claire Hoijer, *Cum Laude*

Natalie Joy Howard

Jacklyn Ann Klimczak, *Cum Laude*

Ainsley Claire Klug

Sarah Ann Muchlbauer, *Magna Cum Laude*

Lauren Lynne Shafer, *Magna Cum Laude*

Zachary A. Siegel, *Magna Cum Laude*

Emily Jo Stich, *Cum Laude*

Andrea M. Tucci

Candidates for the degree

BACHELOR OF MUSIC EDUCATION

Kathleen Marie Fincher, *Cum Laude*

Gregory Vernon Goeden, *Magna Cum Laude*

Larissa M. Kowal

Brandon C. Moore

Theoni Rebecca Richardson, *Magna Cum Laude*

Jordan L. Riddle

Lauren Alyssa Rupert, *Magna Cum Laude*

Andrew William Seidel, *Magna Cum Laude*

Annaliese Danielle Siegel, *Cum Laude*

Andrew Smelser

Zachary Abram Taylor

Cathryn Sarah Volk, *Summa Cum Laude, ΦΚΦ*

College of Liberal Arts

Candidates for the degree

BACHELOR OF ARTS AND BACHELOR OF SCIENCE

Olive-Kemi Adeleye, <i>International Studies</i>	Cecilia A. Boyd, <i>Biology, Cum Laude</i>
Alyssa Nicole Aiello, <i>Biology</i>	Jordan Shane Bradford, <i>Financial Services</i>
Brooke Lauren Alba, <i>Biology</i>	Brittany Taylor Brady, <i>Environmental Studies, Magna Cum Laude</i>
Anthony J. Albano Jr., <i>Business Administration</i>	Rebecca Brait, <i>Business Administration, Cum Laude</i>
Jeremy L. Albert, <i>Computer Science, Cum Laude</i>	Timothy R. Broederdorf, <i>Chemistry, Cum Laude, ΦBK</i>
Olivia Maureen Anderson, <i>English–Literature, Cum Laude</i>	Laura Davida Brooks, <i>Music</i>
Anthony Angelos, <i>Economics</i>	Mallory Jo Brooks, <i>Psychology</i>
Gabriel Jeffrey Aprati, <i>Business Administration</i>	Mallory Marie Brown, <i>Mathematics</i>
Samuel Louis Aronson, <i>Psychology</i>	James Buebe, <i>English–Literature, History</i>
Catlin Marie Arrington, <i>Religion</i>	Kelsey J. Buerger, <i>Accounting, Summa Cum Laude</i>
Mackenzie M. Astling, <i>Business Administration, Cum Laude</i>	Emily Anne Bugg, <i>English–Writing, Magna Cum Laude</i>
Patricia Avila, <i>Business Administration</i>	Kathryn Victoria Bulandr, <i>Psychology, Cum Laude</i>
Randy Nnamdi Azuogu, <i>Economics</i>	Bradley Bullington, <i>Risk Management</i>
Nicole Bacigalupo, <i>Psychology</i>	Michelle Burke, <i>Business Administration</i>
Sang Joon Bae, <i>Business Administration</i>	Jennifer Marie Laren Burns, <i>Music</i>
Samantha R. Baginski, <i>Chemistry, Cum Laude</i>	Douglas S. Burrichter, <i>Political Science</i>
Courtney Elizabeth Baird, <i>Business Administration</i>	Luis David Cabrales-Vasquez, <i>Sociology</i>
Alyssa Michelle Baker, <i>Biology</i>	Ryan Michael Cairns, <i>Accounting, Magna Cum Laude</i>
Carissa Stefanie Ball, <i>Psychology, Magna Cum Laude, ΦKΦ, ΦBK</i>	Arin Bailey Calamari, <i>Business Administration, Religion</i>
Laura Elizabeth Barham, <i>Sociology</i>	Stephanie Lauren Carlson, <i>Political Science, History, Magna Cum Laude, ΦBK</i>
Christopher Michael Beard, <i>Accounting</i>	Jared James Casey, <i>Environmental Studies</i>
Meridith Ashleigh Beird, <i>French & Francophone Studies, Anthropology, Cum Laude</i>	Tara Marie Casey, <i>Business Administration</i>
Emily Kay Beoletto, <i>Business Administration</i>	Dominique A. Castle, <i>International Studies, Economics, Cum Laude</i>
Craig Ross Berberich, <i>Accounting, Economics</i>	Nicole Marie Catizone, <i>Psychology</i>
Sarah Kim Bergman, <i>Political Science, Summa Cum Laude, ΦKΦ, ΦBK</i>	Hilary Hazel Charlet, <i>Business Administration, Summa Cum Laude, ΦKΦ</i>
Jessica Lee Beringer, <i>Hispanic Studies, Secondary Education, Summa Cum Laude, ΦKΦ, ΦBK</i>	Kyle Michael Chin, <i>Biology, Cum Laude, ΦKΦ</i>
Evan Boyle Berna, <i>Business Administration</i>	Nicole J. Ciemniak, <i>Computer Science, Magna Cum Laude</i>
Nicole Leigh Bialeschki, <i>Sociology, Magna Cum Laude</i>	Jake Anthony Colliander, <i>Environmental Studies, Political Science</i>
Alexandra Adele Bidner, <i>Elementary Education</i>	Jordan Michael Collins, <i>Psychology</i>
Samuel James Birsas, <i>Physics, Cum Laude</i>	Kyle David Connour, <i>Physics, Summa Cum Laude, ΦKΦ, ΦBK</i>
Jennifer Lynn Bjorklund, <i>Chemistry</i>	Emily Considine, <i>English–Writing</i>
John Damiano Blumenreich, <i>Mathematics, Secondary Education, Cum Laude</i>	Timothy Michael Coonan II, <i>Accounting</i>
Rebecca Bock, <i>Business Administration</i>	Philip Arthur Courington, <i>Music, Cum Laude</i>
Abby Boggs, <i>International Studies, Cum Laude</i>	Andrew B. Cox, <i>Biology, Magna Cum Laude, ΦBK</i>
Anthony John Bohner II, <i>Psychology</i>	Cynthia Danielle Cruz, <i>Religion, Sociology</i>
Diana Bonilla, <i>Biology</i>	Andrew Douglas Paul Cullett, <i>Biology, Cum Laude</i>
Allison Jeannette Boudreau, <i>Accounting, Magna Cum Laude</i>	Kaileen Caroline Jeanne Cummings, <i>Accounting</i>
Hannah Lynn Bowen, <i>Interdisciplinary Educational Studies</i>	Sean P. Curtin, <i>Mathematics, Secondary Education</i>

Jameson Atticus Dague, *Business Administration*
 Jennifer Marie Darrow, *Accounting, Cum Laude*
 Taylor Nicole Daum, *Psychology, French & Francophone Studies*
 Dalton Davis, *Financial Services*
 Jessica Davis, *Elementary Education, Cum Laude*
 Amy Kay DeBoer, *Elementary Education*
 Margaret DeMaegd, *Biology*
 Tatum B. DeMay, *Environmental Studies*
 Cassandra Lee Dengler, *Business Administration, Cum Laude*
 Matthew R. DeSalvo, *Sociology*
 Meagan Kathleen DeSalvo, *Elementary Education*
 Donald Michael DeSalvo III, *History, Secondary Education, Cum Laude*
 Hannah Glori Dhue, *English–Writing, Theatre Arts, Magna Cum Laude, ΦBK*
 Crystal Diaz, *Biology*
 Michael Adam Dickinson, *English–Writing*
 Rachel Marie Diessner, *Psychology*
 John William Dillon, *Business Administration*
 Dung Hanh Do, *Business Administration*
 Michelle Dominguez, *Psychology*
 Patrick John Domke, *Business Administration*
 Nathaniel Alexander Douglas, *Hispanic Studies, Secondary Education, Summa Cum Laude, ΦBK*
 Patrick Ryan Dowd, *Business Administration*
 Kathleen Dunaway, *Psychology*
 Bailee Rose Dunlap, *International Business*
 Hannah Julian Eby, *Music, Hispanic Studies, Summa Cum Laude, ΦBK*
 Emaido Edem, *Economics*
 Clara Elizabeth Ann Ehrhart, *Business Administration, Magna Cum Laude*
 Kelsey Emmert, *Art, Business Administration*
 Derek Jeffrey England, *Mathematics, Risk Management, Magna Cum Laude*
 Gary Devon Eppinger, *Computer Science*
 Josephine Elise Fairall, *Biology*
 Justin L. Feng, *Chemistry, Cum Laude*
 Katelyn A. Fink, *Mathematics, Magna Cum Laude, ΦBK*
 Ethan Fischer, *Psychology*
 Jessica Taylor Flach, *Chemistry, Magna Cum Laude, ΦBK*
 Rodolfo Flores, *Psychology*
 Hayden Robert Ford, *Chemistry*
 Katherine Elizabeth Ford, *Psychology, Cum Laude*
 Kathryn Anne Marie Forman, *Biology*
 Gina Lynn Franco, *Financial Services, Magna Cum Laude*
 Daylee Breanne Gabelhausen, *Psychology*
 Niko Angelo Garcia, *Sociology*
 Annmarie G. Gast, *Psychology, Cum Laude*
 Ethan T. Gelke, *Psychology, Magna Cum Laude, ΦBK*
 Jonathan M. Gholson, *Music, Physics, Magna Cum Laude*
 Robert Lawrence Gilbert, *Psychology, Magna Cum Laude, ΦKΦ, ΦBK*
 Laura M. Gisondi, *Theatre Arts, Cum Laude*
 Victoria Lynn Goodale, *Psychology*
 Lauryn K. Gorski, *Psychology*
 Sarah Britt Goth, *Elementary Education*
 Julie A. Govedarica, *Business Administration*
 Meghan Elizabeth Gradle, *Chemistry*
 Kelly Arianna Green, *Philosophy*
 Nicole Marie Greenhill, *Psychology, Magna Cum Laude*
 Madelyn Greybar, *Business Administration*
 Kristen Mary Grisamore, *English–Literature, History, Cum Laude*
 Spencer J. Groessl, *Business Administration*
 Nicholas Hahn, *Business Administration*
 Robert Braden Hails, *Chemistry*
 Matthew Carl Hart, *Accounting*
 Tyler Hatcher, *Economics*
 Jacob L. Heller, *Business Administration*
 Casie Lynn Henrikson, *Psychology*
 Meghan Lane Henwood, *Elementary Education, Cum Laude*
 Kelli Herlitz, *Elementary Education*
 Thomas L. Herrmann, *Biology, Cum Laude*
 Brandon Heyen, *Business Administration*
 Nathaniel Hocker, *Chemistry, Magna Cum Laude, ΦBK*
 Kara Camille Hogan, *Psychology*
 Natalie Claire Hoiyer, *Mathematics, Cum Laude*
 Ryan Christopher Holden, *Psychology*
 Colleen Marie Horner, *Accounting, Magna Cum Laude*
 Jordan Renee Hosier, *International Studies, Cum Laude*
 Morgan Mary Howard, *Sociology*
 August Jeremiah Hozie, *Philosophy*
 Stephanie Marie Huber, *Environmental Studies*
 Connor William Hughes, *Psychology*
 Elisa Aurora Hurtado, *Biology*
 Kyle E. Hyland, *Religion*
 Derek John Idstein, *Psychology*
 Ene Patricia Ikpebe, *Economics, Cum Laude*
 Brexton Todd Isaacs, *Political Science*
 Britta Callaghan Jacob, *Biology*
 Liezl Abrau Jacobson, *Accounting, Magna Cum Laude*
 Karen Elizabeth Jaslow, *Biology, Summa Cum Laude, ΦKΦ, ΦBK*
 Bradley A. Jenisch, *Hispanic Studies, Secondary Education*
 Jeffrey W. Jerome, *Accounting*
 Kristen Vitann Johnson, *Business Administration*
 Maxwell A. Johnson, *English–Literature*

Nicholas Jordan, *Psychology*
Rebecca Jozefiak, *Sociology*
Hannah Lillian June, *Psychology, Summa Cum Laude*
Lizabeth M. Kaeb, *Biology, Cum Laude*
Danielle Nicole Kamp, *English–Writing, Cum Laude*
Nikolay Ivanov Karnev, *Financial Services, Cum Laude*
Nicholas Michael Kasperski, *Economics*
Mallika Sule- Kavadi, *Sociology, History*
Anne Marie Kehler, *Political Science*
Anne Marie Kelly, *History*
Brian N. Kim, *Physics*
Amanda Marian King, *Environmental Studies*
Michael Robert Kistner, *Political Science, Magna Cum Laude, ΦBK*
Connor M. Klein, *Business Administration*
Alycia E. Klika, *Psychology, Cum Laude*
Thaddeus David Kon, *Business Administration*
Jared M. Krebs, *Accounting, Cum Laude*
Francine Krieger, *History*
Michael K. Kronberg, *Accounting*
Erica Ursula Kucharski, *English–Writing, Magna Cum Laude, ΦBK*
Matthew Scott Kussmann, *Computer Science*
Steven Lachowski, *Mathematics, Magna Cum Laude, ΦBK*
Garret Laflamme, *Biology*
Amanda Ann Larmon, *Business Administration*
Jialu Li, *Accounting, Cum Laude*
Amelia Elizabeth Linman, *Business Administration, Magna Cum Laude*
Johanna C. Linman, *Interdisciplinary Educational Studies, Cum Laude*
Licen Liu, *Economics*
Qijia Liu, *Physics, Mathematics*
Steven William Losos Jr., *International Business*
Kathleen Helen Lucas, *History, Magna Cum Laude, ΦBK*
Michelle Lui, *History, Secondary Education, Cum Laude*
Leann Labrecque Lyden, *Environmental Studies, Sociology*
Valerie Mack, *Psychology, Magna Cum Laude*
Alejandro Mancera, *Physics*
Melissa Anne Mariotti, *Elementary Education*
Nicholas Bryan Mark, *Accounting*
John Daniel Marren, *Political Science, Magna Cum Laude*
Corinne Louise Martin, *Psychology, Cum Laude*
Leobanny Martinez, *Business Administration*
Paige Kathleen Maurer, *Biology, Summa Cum Laude, ΦKΦ, ΦBK*
Jonathan Andrew McBride, *Business Administration*
Margaret McCarter, *Physics, Magna Cum Laude, ΦBK*
Ryan McConnell, *Chemistry, Cum Laude*
James Cameron McGlynn Jr., *Business Administration, Cum Laude*
David Lawrence John McGrath, *Risk Management, Cum Laude*
Ian J. McGuire, *Business Administration*
Luke John McLoughlin, *Music, English–Writing, Magna Cum Laude, ΦKΦ, ΦBK*
Kaitlin Ann McManus, *English–Writing, Magna Cum Laude*
Emily Ann Mecartney, *Accounting, Cum Laude*
Colleen Marie Melone, *History, Greek and Roman Studies, Cum Laude, ΦBK*
Sarah Marie Menke, *Theatre Arts, Magna Cum Laude*
Jennifer N. Merrill, *Psychology*
Madeline Frances Minogue, *Psychology, Magna Cum Laude*
Lisa Mishra, *Religion, Economics*
James Mitchell, *Biology*
Stephanie Anne Modert, *Biology*
Chloe Colleen Montgomery, *Accounting*
Ashley Montijo, *Psychology, Magna Cum Laude*
Brian Preston Morefield, *English–Writing*
Chloe Morris, *Business Administration*
Luke G.O. Walker Mueller, *History, Cum Laude*
Madeline E.M. Mueller, *Psychology, Music*
Niall A. Mulcahy, *Mathematics, Secondary Education*
John G. Munyon, *Business Administration*
Taylor Marie Murphy, *Business Administration*
Parker W. Musselman, *Business Administration*
David Guy Myers, *International Business, Cum Laude*
Gwenyth Lenore Naftzger, *Mathematics, Secondary Education*
Madeleine C. Negro, *Environmental Studies, Music*
Chi Nguyen, *Business Administration, Cum Laude*
Linh Khanh Nguyen, *Financial Services, Financial Economics*
Tung Dao Nguyen, *Economics, Mathematics, Summa Cum Laude, ΦBK*
Kyle Lee O’Daniel, *English–Writing, Secondary Education, Magna Cum Laude, ΦBK*
Jehona Osmani, *Psychology, Hispanic Studies*
Jennifer Jean Oswald, *Theatre Arts*
Dylan Overstreet, *Risk Management, Cum Laude*
Danielle Marie Owerko, *Biology, Magna Cum Laude, ΦBK*
Alexandra Marie Partipilo, *Elementary Education*
Stephanie Rose Patton, *Biology, Cum Laude*
Emma Ruth Peck, *Sociology, Summa Cum Laude, ΦKΦ*
Jonathan Perko, *Accounting, Cum Laude*
Allison Marie Perlongo, *Music*
Austin Bradley Peterson, *Computer Science*
Tyler Peterson, *Accounting*
Anh Phan, *Accounting, Magna Cum Laude*
Brian D. Pieroth, *Mathematics*
Ralph Fridson Pacatang Pineda, *Business Administration*

Kevin Piotrowski, *Business Administration, Political Science, Magna Cum Laude*
 John Spencer Pisani, *Accounting*
 Casey Plach, *Political Science, Summa Cum Laude, ΦΚΦ, ΦBK*
 David Edward Podrazik, *Psychology, Magna Cum Laude*
 Rachael Renee Pond, *Business Administration*
 Emily Starr Potosky, *Business Administration*
 Emily Powers, *Psychology, Summa Cum Laude, ΦΚΦ*
 Sara Yates Raffensperger, *English–Writing, Cum Laude*
 Krystal Marie Randazzo, *Mathematics, Secondary Education, Summa Cum Laude, ΦBK*
 Morgan Lynn Ransom, *Political Science*
 Hira Rashid, *Psychology*
 Colin B. Rathe, *History, Secondary Education, Cum Laude*
 Annette E. Rauch, *Hispanic Studies, Sociology, Cum Laude*
 Kasey Jordan Reaber, *Elementary Education*
 Timothy R. Reardanz, *Business Administration, Magna Cum Laude*
 Devon Lynn Redlin, *Art*
 Michael Resurreccion, *Sociology*
 Kenneth M. Richards, *Biology*
 Muhammad Kumbar Rizvi, *Economics*
 Alice Clare Robertson-Smith, *Chemistry*
 Kevin M. Roenitz, *Chemistry*
 Trey B. Rogers, *Business Administration*
 Charles Jacob Ross, *Biology*
 Luke Rossi, *Business Administration*
 Genyl A. Rufino, *Biology, Magna Cum Laude*
 Joseph C. Ruskey, *English–Writing, Cum Laude*
 Alan Russian, *Computer Science, Magna Cum Laude*
 Bethany Hope Salm, *Music, Cum Laude*
 Alexander Samuel, *English–Literature, Secondary Education*
 Angel Sanchez, *English–Literature, Secondary Education, Cum Laude*
 Leslie Sanchez, *Psychology*
 Steven Santucci, *Business Administration, Magna Cum Laude*
 Samuel D. Savignac, *Psychology*
 Madeline Jo Savin, *English–Writing, Cum Laude*
 Alexander C. Scherer, *Chemistry, Physics, Magna Cum Laude, ΦBK*
 Nathaniel Christopher Schmeling, *English–Writing, Computer Science*
 Emma Schmidt, *Biology*
 Michelle Lynn Schoch, *Business Administration*
 Gavin Schroeder, *Business Administration, Cum Laude*
 Rachel Nicole Schuck, *Business Administration, Magna Cum Laude*
 Kinzie Jo Schweigert, *English–Writing, Cum Laude*
 Courtney Elizabeth Sears, *Biology*
 Aneesh Sehgal, *Accounting*
 Adam Seifert, *Business Administration, Cum Laude*
 Breck Christian Seitz, *Business Administration*
 Corin Stephen Sengsay, *Psychology*
 Amy Elizabeth Seter, *Environmental Studies, Cum Laude, ΦBK*
 Connor J. Shanks, *Biology*
 Alyssa Kay Shannon, *Business Administration*
 Yichen Shao, *Accounting, Magna Cum Laude*
 Taylor Mary Jean Sharp, *International Studies, Political Science, Magna Cum Laude*
 Robert T. Shepard, *International Business*
 Brianna Siebert, *Psychology, Magna Cum Laude*
 Daniel Siegert, *Accounting*
 Charlotte Louise Silver, *International Studies, Cum Laude*
 Thomas Franklin Simmons, *Computer Science, Magna Cum Laude, ΦBK*
 Jake Sloan, *Business Administration, Magna Cum Laude*
 Kelli Sarah Sloan, *Biology*
 Amelia Von Gemmingen Smith, *Psychology, Summa Cum Laude, ΦBK*
 Evan A. Smith, *Biology, Cum Laude*
 Jason T. Smith, *Political Science*
 Patrick Edward Sodemann, *Business Administration*
 Daniel Song, *Psychology*
 Samantha Ann Sorenson, *Biology*
 Iris Jullar Sowlat, *Theatre Arts, English–Literature, Cum Laude*
 Elizabeth Claire Specht, *Religion*
 Tyler Stamper, *Financial Services*
 Margaret Victoria Stanielun, *Psychology*
 KiriLi Nan Stauch, *Anthropology, Psychology*
 Laura Helene Steenberge, *Chemistry, Summa Cum Laude, ΦBK*
 Lauren K. Streblo, *Psychology*
 Mark Timothy Streid, *Accounting*
 Sneha Subramanian, *Anthropology*
 Colleen Elizabeth Swanson, *Elementary Education, Cum Laude*
 Lexia Rayona Swope, *Psychology, Sociology*
 Nikki Marie Taylor, *Art*
 Norma Tejeda Sanchez, *Accounting, Cum Laude*
 Nii Akuetteh Kwame Tetteh, *Accounting, Magna Cum Laude*
 Karen C. Thul, *Anthropology, Magna Cum Laude*
 Kathryn Tomaszynska, *Anthropology*
 Jeffrey William Toraason, *Biology*
 Jenna Leigh Tranel, *Business Administration*
 Daniel M. Truesdale, *Economics, Political Science, Magna Cum Laude, ΦΚΦ, ΦBK*
 Ayethaw Tun, *Psychology*

Graice Anna Van Spankeren, *Anthropology, French & Francophone Studies, Summa Cum Laude, ΦΚΦ*
 Emma Leigh Vander Woude, *International Studies, German, Cum Laude*
 Jeannette L. Varley, *Psychology*
 Kelsey VonderHaar, *Theatre Arts, Cum Laude*
 Son Vu Dang, *Business Administration, Cum Laude*
 Edwin Walker-Holzgrafe, *Business Administration*
 Brenden Michael Wall, *Psychology*
 Chen-Hon Wang, *Accounting*
 Sen Wang, *Philosophy, Magna Cum Laude, ΦBK*
 Theresa M. Ward, *English–Writing*
 Emily Warne, *Sociology*
 Patrick Yulei Wen, *Biology, Magna Cum Laude, ΦBK*
 Kimberly Jo Wenger Diller, *Mathematics, Risk Management, Summa Cum Laude, ΦΚΦ*
 Michael Joseph Wettengel, *English–Writing, Magna Cum Laude, ΦBK*
 Brenda Marie Wheeler, *Psychology*
 James J. White, *Business Administration*

Jessica Marian White, *Psychology, Cum Laude*
 Kenneth Joseph Wienckowski, *Business Administration*
 Joshua James Wiggs, *Computer Science*
 Frederick Williams, *Physics*
 Cameron Dennis Wilmington, *Business Administration, Magna Cum Laude*
 Rachel Renee Wimberly, *Sociology*
 Natalie Jo Witter, *Economics, Magna Cum Laude*
 John Worley, *Business Administration*
 Blair Elise Wright, *Psychology, Cum Laude*
 Colton Matthew Wright, *Accounting*
 Tyler David Wright, *Chemistry, Physics*
 Catherine Wu, *Accounting*
 Shanshan Xu, *Accounting, Cum Laude*
 Rebecca Kathleen Yarnot, *Psychology*
 Anqi Zhang, *Mathematics, Magna Cum Laude*
 Bingjie Zhou, *Business Administration, Magna Cum Laude*
 Kaitlyn Nicole Zieman, *Biology*
 Zachary Joseph Zimmer, *Biology*

President's Cabinet

Richard F. Wilson, Ph.D. President
 Jonathan D. Green, D.M.A. Provost and Dean of the Faculty
 Karla C. Carney-Hall, Ph.D. Vice President for Student Affairs/Dean of Students
 Daniel P. Klotzbach, M.B.A. Vice President for Business and Finance
 Matthew O. Kurz, M.B.A. Vice President for Communications
 Martin W. Smith, M.S. Vice President for Advancement
 Tony Bankston '91, B.A. Dean of Admissions
 Robert P. Murray '82, M.S. Dean of Enrollment Management
 Frank A. Boyd, Jr., Ph.D. Associate Provost for Academic Planning and Standards
 Molly Munson-Dryer, Ed.D. Executive Assistant to the President
 Carl F. Teichman '80, M.S. Director of Government and Community Relations
 Michael D. Thompson, Ed.D. Assistant Vice President for Institutional Research, Planning and Evaluation
 Joseph Williams, Ph.D. Chair, Council on University Programs and Policy

Emeriti Professors

Barbara Bowman, Ph.D.	Herman L. Detweiler,	Dennis E. Groh, Ph.D.	Julie Prandi, Ph.D.	Todd M. Tucker, Ph.D.
Susan J. Brandon, M.F.A.	M.S.T.	Shelia Jesek-Hale, Ph.D.	Christopher Prendergast,	Evelyn Wantland, Ph.D.
Robert Bray, Ph.D.	Charles Lynn DeVore,	Donna L. Hartweg,	Ph.D.	Robert Bedford Watkins,
Charlotte Brown, Ph.D.	Ph.D.	Ph.D.	Kathryn Scherck,	Jr., Ph.D.
Jared Brown, Ph.D.	Robert P. Donalson,	Cyril C. Ling, D.B.A.	D.N.Sc.	John D. Wenum, Ph.D.
L. Jane Brue, M.S.N.	D.M.	Mario Mancinelli, M.A.	Roger H. Schnaitter,	John C. Westall,
Paul Bushnell, M.A.	Steven Eggleston, M.M.	John McGrosso, M.Mus.	Ph.D.	M.S.L.S.
George Churukian,	John Ficca, Ph.D.	Sharie Metcalfe, Ph.D.	Sammy Scifres, D.M.A.	William Luther White,
Ph.D.	Ruth Ann C. Friedberg,	D. Paul Miller, Ph.D.	Geoffrey L. Story, Jr.,	Ph.D.
Barbara Cothren, M.S.	M.S.	Carren Moham, D.M.A.	Ph.D.	Raymond G. Wilson,
Bruce B. Criley, Ph.D.	Mona J. Gardner, Ph.D.	William T. Morris, Ph.D.	Thomas Streeter, D.M.A.	Ph.D.
Norma Criley, Ph.D.	Timothy Garvey, Ph.D.	Robert L. Mowery, Ph.D.	Alice Swift, MSN	Nancy Zander, M.S.
Connie Dennis, Ph.D.	David M. Gehrenbeck,	Pamela Muirhead, Ph.D.	Margaret D. Tennis,	
	S.M.D.		Ed.D.	

Professors

Teodora Amoloza, Ph.D.	Linda Farquharson,	Robert Kearney, J.D.	Tari Renner, Ph.D.	Charles Springwood,
Susan Anderson, Ph.D.	D.M.A.	Robin Leavitt, Ph.D.	Timothy Rettich, Ph.D.	Ph.D.
Miles Bair, M.F.A.	J. Scott Ferguson, D.M.A.	Nancy Loitz, M.F.A.	Rebecca Roesner, Ph.D.	Kevin Strandberg, M.F.A.
Marina Balina, Ph.D.	Carmen Ferradans, Ph.D.	Thomas Lutze, Ph.D.	Georganne Rundblad,	Nancy Sultan, Ph.D.
David Bollivar, Ph.D.	Victoria Folse, Ph.D.	Sherilyn McElroy, M.S.	Ph.D.	Daniel Terkla, Ph.D.
Dennis Bridges, M.S.	Linda French, Ph.D.	Ram Mohan, Ph.D.	Karen Schmidt, Ph.D.	Marcia Thomas, M.L.S.
Christopher Callahan,	Sonja Fritzsche, Ph.D.	William Munro, Ph.D.	April Schultz, Ph.D.	Hans-Joerg Tiede, Ph.D.
Ph.D.	Rebecca Gearhart, Ph.D.	Carole Myscofski, Ph.D.	Christopher Schumacher,	Curtis Trout, M.F.A.
Richard Kent Cook,	R. Given Harper, Ph.D.	Carolyn Nadeau, Ph.D.	M.S.	David Vayo, D.M.A.
D.M.A.	Tian-Xiao He, Ph.D.	Kathleen O'Gorman,	Michael Seeborg, Ph.D.	William Walsh, Ph.D.
Robert Delvin, M.L.S.	J. Robert Hippensteele,	Ph.D.	Greg Shaw, Ph.D.	W. Michael Weis, Ph.D.
Zahia Drici, Ph.D.	Ph.D.	Gerald Olson, M.S.	James Sikora, Ph.D.	William West, M.M.
Lynda Duke, M.L.S.	Christina Isabelli, Ph.D.	Mauricio Parra, Ph.D.	James Simeone, Ph.D.	Michael Young, Ph.D.
Norm Eash, M.S.	Narendra Jaggi, Ph.D.	Mario Pelusi, Ph.D.	Gabriel Spalding, Ph.D.	
Irving Epstein, Ph.D.	Melvyn Jeter, Ph.D.	James Plath, Ph.D.		

Associate Professors

Elizabeth Balser, Ph.D.	Teresa Fish, M.S.	Dennis Martel, M.S.	Ilaria Ossella-Durbal, Ph.D.	Kevin Sullivan, Ph.D.
David Barrett, M.S.	Amit Ghosh, Ph.D.	David Marvin, J.D.	Elisabeta Pana, Ph.D.	Scott Susong, M.F.A.
Frank Boyd, Ph.D.	Nina Gordon, D.M.A.	James Matthews, Ph.D.	Thushara Perera, Ph.D.	Susan Swanlund, Ph.D.
Brian Brennan, Ph.D.	Gordon Horwitz, Ph.D.	Vadim Mazo, M.M.	Stephen Press, Ph.D.	Christopher Sweet, M.L.S.
Laurine Brown, Ph.D.	Frederick Hoyt, Ph.D.	Marcia McDonald, M.F.A.	Thomas Quinn, M.F.A.	Jason Themason, Ph.D.
Mary Ann Bushman, Ph.D.	William Jaeckle, Ph.D.	Diego Mendez-Carbajo, Ph.D.	Ronald Rose, M.A.T.	Michael Theune, Ph.D.
Gerald Chapman, Ph.D.	Abigail Jahiel, Ph.D.	Meg Miner, M.L.S.	Alison Sainsbury, Ph.D.	Cesar Valverde, Ph.D.
Mary Coleman, Ph.D.	Tao Jin, Ph.D.	Kathleen Montgomery, Ph.D.	Robert Schultz, Ph.D.	Michael Wagner, M.S.
Stephanie Davis-Kahl, M.L.S.	William Kauth, Ed.D.	Kimberly Nelson-Brown, B.S.	Brad Sheese, Ph.D.	Loni Walker, Ph.D.
Joanne Diaz, Ph.D.	Jean MacFarland Kerr, M.A.	Leah Nillas, Ph.D.	Scott Sheridan, Ph.D.	Joseph Williams, Ph.D.
Robert Erlewine, Ph.D.	Linda Kunce, Ph.D.		Mia Smith, M.S.	David Willis, Ph.D.
Constance Estep, M.F.A.	Seung-Hwan Lee, Ph.D.		Dani Snyder-Young, Ph.D.	

Assistant Professors

Melinda Baur, Ph.D.	Andrew Engen, Ph.D.	Wendy Kookan, Ph.D.	Brandi Reissenweber, M.F.A.
Lydia Bertschi, D.N.P.	Sally Fitzgibbons, M.S.	Edgar Lehr, Ph.D.	Daniel Roberts, Ph.D.
Thomas Blanchard, Ph.D.	Daynali Flores-Rodriguez, Ph.D.	Brenda Lessen, Ph.D.	Molly Robey, Ph.D.
Crystal Boyce, M.L.S.	Ellen Furlong, Ph.D.	Mark Liffiton, Ph.D.	Michael Roche, Ph.D.
Craig Broadbent, Ph.D.	Roger Garrett, M.M.	Katheryn McCreery, M.S.	Stephen Sakowski, Ph.D.
Darryl Brown, Ph.D.	Pennie Gray, Ph.D.	Mignon Montpetit, Ph.D.	Kyle Schauls, M.A.
Meghan Burke, Ph.D.	Jamie-Rose Guarrine, D.M.A.	Marie Nebel-Schwalm, Ph.D.	Lisabeth Searing, Ph.D.
Karen Bussone, M.B.A.	Amanda Hopkins, Ph.D.	Lisa Nelson, Ph.D.	Andrew Shallue, Ph.D.
Nawaraj Chaulagain, Ph.D.	William Hudson, Ph.D.	Kristine Nielsen, Ph.D.	Tamara Thies, Ph.D.
Amanda Coles, Ph.D.	Lev Ivanov, D.M.A.	Kanchana Manori Perera, Ph.D.	Amanda Vicary, Ph.D.
Loralyn Cozy, Ph.D.	Emily Kelahan, Ph.D.	Timothy Pitchford, D.M.A.	Robert Wagner, Ph.D.
Mark Criley, Ph.D.	Abigail Kerr, Ph.D.	Joseph Plazak, Ph.D.	David Wallace, Ph.D.
Bruno deHarak, Ph.D.	Noel Kerr, Ph.D.	Adriana Ponce, Ph.D.	Brian Walter, Ph.D.
Ann Eckhardt, Ph.D.	Min Hyoung Kim, Ph.D.	Ilia Radoslavov, D.M.A.	Adam Woodis, Ph.D.
			Ikuko Yuasa, Ph.D.

Instructors

Jennifer Crider, M.A.	Eva Ferguson, M.M.	Yaping Jing, M.S.	Lindsey Rosecrans, B.A.
Andrew Dahan, M.M.	Gregory Huffaker, B.A.	Robert Mangialardi, M.M.	Amy Yeates, M.S.N.
Saundra DeAthos-Meers, M.M.	Zachary Iannucci, B.S.	Edward Risinger, M.M.	

Prior to and during the Commencement ceremony, the Illinois Wesleyan Alumni Association will sponsor a hospitality beverage tent which is located south of Shaw Hall on the east side of the Eckley Quadrangle. A first-aid station is located near the tent. In the Shirk Center these same services will be available in the lobby.

Before the ceremony, light refreshments may be purchased at Hattie's and Tommy's in the Hansen Student Center and the Coffee Shoppe in Memorial Center. The University Bookstore in the Hansen Student Center offers many items for sale.

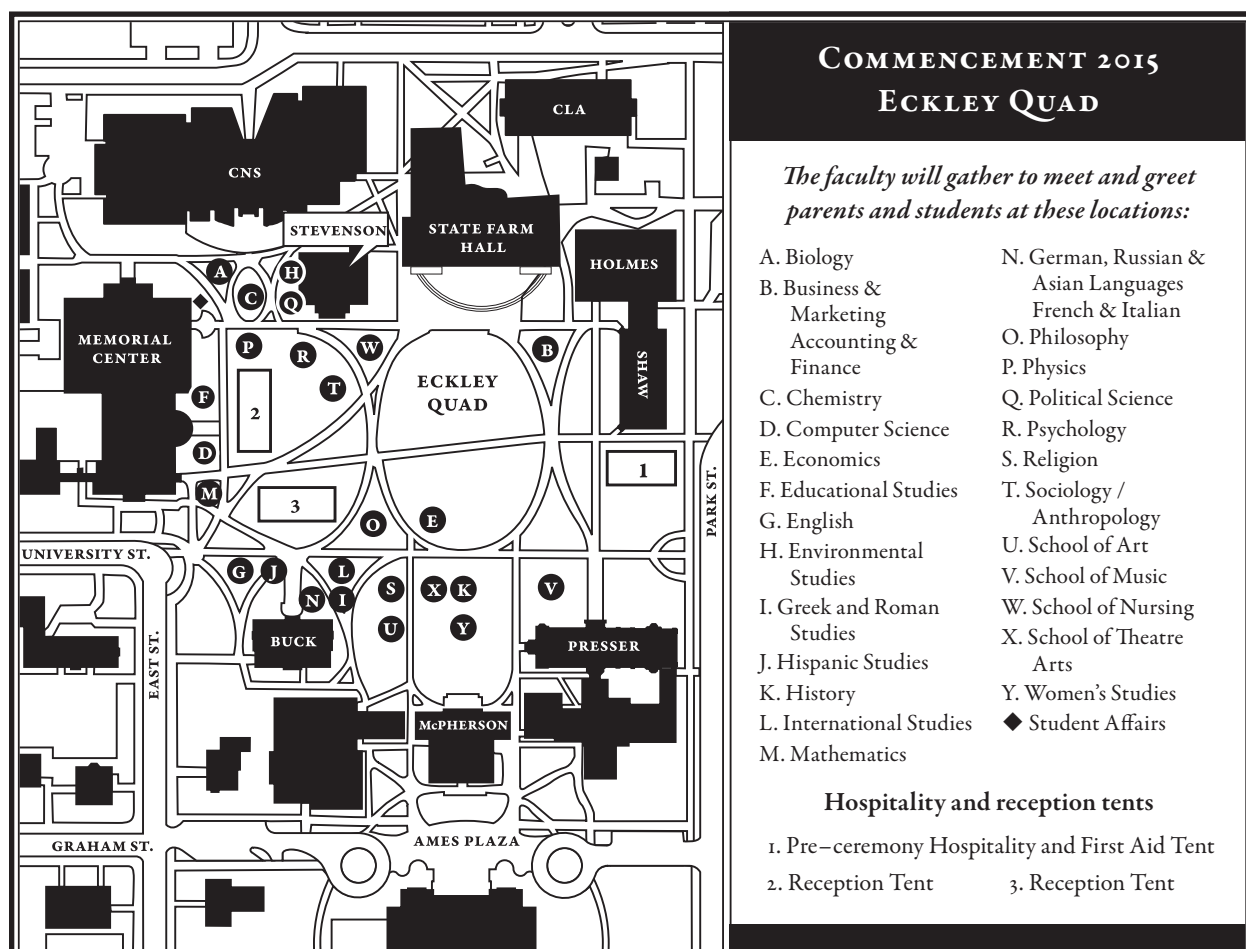
Near the Eckley Quadrangle, restrooms are located on the first floor of the following buildings: Shaw Hall, Center for Liberal Arts (wheelchair accessible), Memorial Center, and Holmes Hall.

In the Shirk Center, the restrooms are located to the north of the lobby.

Following the ceremony, the Illinois Wesleyan Alumni Association invites you to a short reception in the tents on Eckley Quadrangle. If the ceremony is in the Shirk Center, the reception will be in the Activity Center.

Faculty look forward to greeting the graduates and their families during the reception.

Senior marshals for the Commencement ceremony are Professor Rebecca Roesner and Associate Provost Frank Boyd. Student marshals are Jake Thaker '17 and Crystal Ocampo-Fernandez '18 representing the Student Senate Executive Board.





*C Please recycle this program in specially
marked recycle containers.*