



Winter 2-19-1992

Founders' Day Convocation (1992 Program and video)

Illinois Wesleyan University

Follow this and additional works at: https://digitalcommons.iwu.edu/founders_day_docs



Part of the [Higher Education Commons](#)

Recommended Citation

Illinois Wesleyan University, "Founders' Day Convocation (1992 Program and video)" (1992). *Founders' Day*. 60.

https://digitalcommons.iwu.edu/founders_day_docs/60

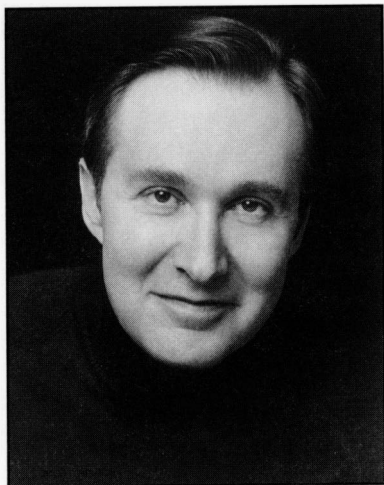
This Article is protected by copyright and/or related rights. It has been brought to you by Digital Commons @ IWU with permission from the rights-holder(s). You are free to use this material in any way that is permitted by the copyright and related rights legislation that applies to your use. For other uses you need to obtain permission from the rights-holder(s) directly, unless additional rights are indicated by a Creative Commons license in the record and/ or on the work itself. This material has been accepted for inclusion by faculty at Illinois Wesleyan University. For more information, please contact digitalcommons@iwu.edu.

©Copyright is owned by the author of this document.



Founders' Day Convocation

February 19, 1992 11:00 a.m.
Westbrook Auditorium, Presser Hall



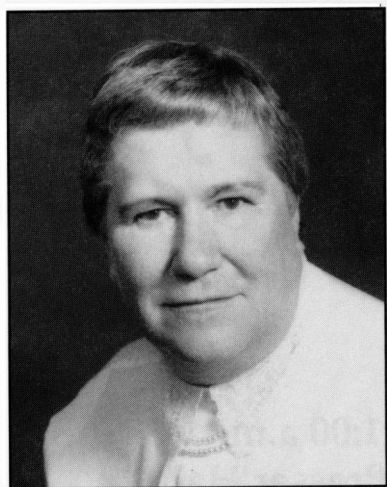
Roger R. Roloff *Baritone*

Roger R. Roloff, a 1969 graduate of Illinois Wesleyan University, is an internationally acclaimed baritone, who has won accolades for performances in demanding Wagnerian operatic roles.

He won the 1984 Richard Tucker Award, one of the music world's greatest honors. The Richard Tucker Music Foundation observed, "It was unanimous that in Mr. Roloff the Award Committee had found a world-class talent . . . Mr. Roloff stands on the threshold of a career that can encompass all the great baritone literature, from the most demanding Wagnerian helden-baritone roles to the suavity and subtleties of Mozart."

More recently, Mr. Roloff has performed in *Lohengrin* for L'Opéra de Nice and *Otello* for the Kentucky Opera. He has recorded for the Telarc label and appeared with the Calgary Opera, the Munich Opera, New York City Opera, the Los Angeles Music Center Opera, the Houston Grand Opera, the San Antonio Symphony, the Boston Lyric Opera, the Hawaii Opera, and the Seattle Opera.

Mr. Roloff's road to international opera stardom was unusual. He majored in English literature at Illinois Wesleyan in preparation for a career as a teacher—although he studied voice with Dr. David Nott as an undergraduate. While working on a doctorate at the State University of New York, Stony Brook, almost 20 years ago, he became involved in opera workshops—an activity that led him to major vocal competitions that helped launch his career on the international opera stage.



Betty M. Vetter *Demographer*

Betty M. Vetter is a leading national authority on trends in U.S. science and engineering manpower. Her pioneering studies, conducted over three decades, have given government policymakers, business leaders, and educators vital information needed to help the United States maintain a competitive edge in science and technology.

Mrs. Vetter has served as executive director of the Washington, D.C.-based Commission on Professionals in Science and Technology (formerly the Scientific Manpower Commission) since 1963. Her work has focused on providing accurate information about the characteristics of and opportunities for U.S. scientists and engineers, as well as encouraging excellence in the education of scientists and engineers. Mrs. Vetter's landmark studies have chronicled the ups-and-downs in demand and supply of scientists and engineers, their salaries, career opportunities, and demographic characteristics. Among her 150 published reports and articles are landmark studies focusing on women and minorities in science and engineering. Much of Mrs. Vetter's research has been supported by groups such as the National Science Foundation, U.S. Army, and the Ford Foundation.

Mrs. Vetter earned a bachelor's degree in chemistry at the University of Colorado and a master's degree from Stanford University. She has done graduate work at the University of California, Berkeley, and has a certification in meteorology from the U.S. Navy Meteorology School.

Illinois Wesleyan University

President Minor Myers, jr., *Presiding*
Professor Alice E. Swift, *Mace Bearer*

PROCESSIONAL

Prelude to *Lohengrin**Richard Wagner*
(1813-1883)

The Illinois Wesleyan Orchestra
Professor Vadim Mazo, *Conductor*

INVOCATION.....Chaplain William White

WELCOME.....President Minor Myers, jr

AWARDING OF HONORARY DEGREESProvost Ellen S. Hurwitz and
President Minor Myers, jr

Mrs. Betty M. Vetter, Executive Director
Commission on Professionals in Science and Technology

Mr. Roger R. Roloff, Class of 1969
E. Melba Johnson Kirkpatrick Visiting Fellow in the Arts

PERFORMANCE

"Wotan's Farewell" from *Die Walküre*.....*Richard Wagner*
Mr. Roger R. Roloff '69
Baritone

The Illinois Wesleyan Orchestra
Professor Steven W. Eggleston, *Conductor*

REMARKS.....Mr. Roger R. Roloff '69

ALMA WESLEYANA

From hearts aflame, our love we pledge to thee
Where'er we wander, over land or sea;
Through time unending loyal we will be –
True to our Alma Mater, Wesleyan.

When college days are fully past and gone,
While life endures, from twilight dream til dawn
Grandly thy soul shall with us linger on –
Star-crowned, our Alma Mater, Wesleyan!

Professor W.E.Schultz
(1887-1964)

RECESSIONAL.....*Richard Wagner*

Prelude to *Die Meistersinger von Nürnberg*

The Illinois Wesleyan Orchestra
Professor Vadim Mazo, *Conductor*