



1-12-2022

## Founders' Day Convocation (2022 Program, video and slides)

Illinois Wesleyan University

Follow this and additional works at: [https://digitalcommons.iwu.edu/founders\\_day\\_docs](https://digitalcommons.iwu.edu/founders_day_docs)



Part of the [Higher Education Commons](#)

---

### Recommended Citation

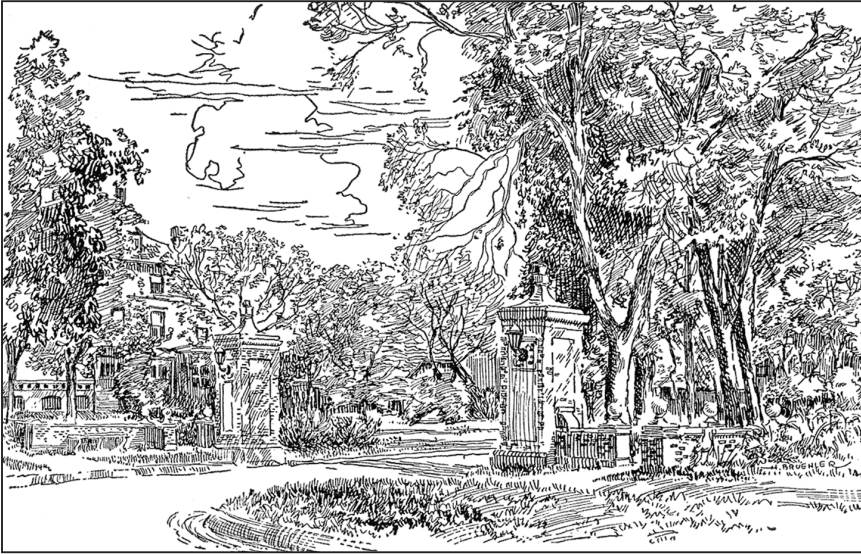
Illinois Wesleyan University, "Founders' Day Convocation (2022 Program, video and slides)" (2022). *Founders' Day*. 85.

[https://digitalcommons.iwu.edu/founders\\_day\\_docs/85](https://digitalcommons.iwu.edu/founders_day_docs/85)

This Article is protected by copyright and/or related rights. It has been brought to you by Digital Commons @ IWU with permission from the rights-holder(s). You are free to use this material in any way that is permitted by the copyright and related rights legislation that applies to your use. For other uses you need to obtain permission from the rights-holder(s) directly, unless additional rights are indicated by a Creative Commons license in the record and/ or on the work itself. This material has been accepted for inclusion by faculty at Illinois Wesleyan University. For more information, please contact [digitalcommons@iwu.edu](mailto:digitalcommons@iwu.edu).

©Copyright is owned by the author of this document.

## FOUNDERS' GATE INSCRIPTION



*From a 1931 booklet of pen sketches of Illinois Wesleyan University*

*WE STAND IN A POSITION OF INCALCULABLE RESPONSIBILITY  
TO THE GREAT WAVE OF POPULATION OVERSPREADING THE VALLEY  
OF THE MISSISSIPPI. DESTINY SEEMS TO POINT OUT THIS VALLEY  
AS THE DEPOSITORY OF THE GREAT HEART OF THE NATION.  
FROM THIS CENTER, MIGHTY PULSATIONS, FOR GOOD OR EVIL,  
MUST IN THE FUTURE FLOW, WHICH SHALL NOT ONLY AFFECT  
THE FORTUNE OF THE REPUBLIC, BUT REACH IN THEIR INFLUENCE  
OTHER AND DISTANT NATIONS OF THE EARTH.*

### THE FOUNDERS OF ILLINOIS WESLEYAN UNIVERSITY

Peter Cartwright	W. H. Allin	Thomas P. Rogers
C. W. Lewis	W. C. Hobbs	John W. Ewing
J. C. Finley	John E. McClun	Lewis Bunn
John S. Barger	John Magoun	E. Thomas
James Leaton	Thomas Magee	Isaac Funk
John Van Cleve	William Wallace	James Allin
James F. Jaquess	Charles P. Merriman	D. Trimmer
William J. Rutledge	James Miller	Kersey H. Fell
C. M. Holliday	William H. Holmes	Silas Watters
W. D. R. Trotter	Linus Graves	Reuben Andrus

Illinois Wesleyan University

# FOUNDERS' DAY CONVOCATION



January 12, 2022

## PROGRAM

President Georgia Nugent, *Presiding*

PRELUDE: Beethoven Piano Sonata in E major,  
Opus 109, second movement  
Franklin Larey, *pianist*

*Ludwig van Beethoven*  
(1770–1827)

INVOCATION  
Rev. Walt Wiltschek  
*University Chaplain*

WELCOME  
Georgia Nugent  
*President*

INTRODUCTION OF SPEAKER  
Mark Brodl  
*Provost*

FOUNDERS' DAY REMARKS  
“Mimicking nature to create new technology”  
William Murphy '98

POSTLUDE  
Mozart Piano quartet in G minor,  
third movement  
Franklin Larey, Farida Bacharova,  
Paula Gabriel, and Kristiyan Chernev

*Wolfgang Amadeus Mozart*  
(1756–1791)

## Bill Murphy '98

Professor Murphy is the Harvey D. Spangler Endowed Professor of biomedical engineering/orthopedics & rehabilitation at the University of Wisconsin-Madison. Bill is the principal investigator of the Murphy Group Bioinspired Materials Laboratory, which seeks to build innovative biomaterials to address significant challenges in biology and medicine. Bill's research has been prolific and has produced 180 journal publications and 23 U.S. Patents. He also has an additional 30 pending U.S. Patents and has founded four start-up companies.

After graduating from IWU in 1998 with a double major in physics and math, Bill completed his M.S. and Ph.D. in biomedical engineering from the University of Michigan. His post-doctoral research was completed in the department of chemistry at the University of Chicago.

Bill was previously the Director of the University of Wisconsin-Madison Stem Cell and Regenerative Medicine Center. Currently, Bill is a Fellow for the Wisconsin Institute of Discovery, Director of the Human MAP's Center, and Biomanufacturing Thrust Leader for the Grainger Institute for Engineering. Most recently, he was named Director of the Forward BIO Institute, which seeks to expedite the transformation of innovative technologies into healthcare solutions with broad societal impact. He is the recipient of the National Science Foundation Career award (2008). In 2019, Bill was inducted as a Fellow in the National Academy of Inventors.

