



Fall 9-25-2013

Faculty Biennial Exhibition at Merwin and Wakeley Galleries

Tia Patsavas
Illinois Wesleyan University

Follow this and additional works at: <https://digitalcommons.iwu.edu/news>

Recommended Citation

Patsavas, Tia, "Faculty Biennial Exhibition at Merwin and Wakeley Galleries" (2013). *News and Events*. 2115.

<https://digitalcommons.iwu.edu/news/2115>

This Article is protected by copyright and/or related rights. It has been brought to you by Digital Commons @ IWU with permission from the rights-holder(s). You are free to use this material in any way that is permitted by the copyright and related rights legislation that applies to your use. For other uses you need to obtain permission from the rights-holder(s) directly, unless additional rights are indicated by a Creative Commons license in the record and/ or on the work itself. This material has been accepted for inclusion by faculty at Illinois Wesleyan University. For more information, please contact digitalcommons@iwu.edu.

©Copyright is owned by the author of this document.

Faculty Biennial Exhibition at Merwin and Wakeley Galleries

Sept. 25, 2013

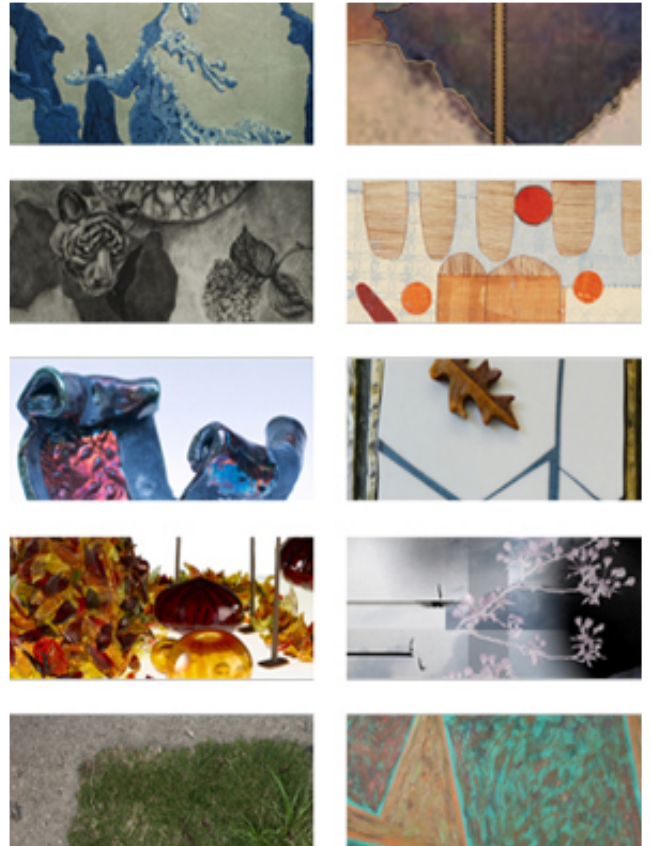
BLOOMINGTON, Ill.— Illinois Wesleyan's Merwin and Wakeley Galleries in the Joyce G. Eichhorn Ames School of Art building (6 Ames Plaza West, Bloomington) will feature the Faculty Biennial Series, an exhibition by full-time and part-time faculty in the School of Art, from October 1 through October 30.

Gallery hours are Monday through Friday, 12 to 4 p.m., Tuesday evening, 7 to 9 p.m. and Saturday and Sunday, 1 to 4 p.m. For Homecoming Weekend, the gallery will be open from 11 a.m. to 5 p.m. on both Saturday October 12 and Sunday, October 13. The gallery will be closed on Friday, October 18 for fall break. All events at the galleries are free and open to the public.

A reception will be held on Thursday, October 3 from 4 to 6 p.m. From 3 to 4:30 p.m. on Saturday, October 12, a special reception for IWU Alumni will be held in the galleries.

The series will feature all areas of Illinois Wesleyan's studio art program: painting, drawing, printmaking, graphic design, photography, ceramics, sculpture and glass. Featured faculty members will include: Miles Bair, Constance Estep, LJ Douglas, Marie-Susanne Langille, Carmen Lozar, Sherri McElroy, Thérèse O'Halloran, Spencer Sauter, Kevin Strandberg and Brain Sullan.

For additional information about the Merwin and Wakeley Galleries, contact Carmen Lozar, director of the galleries, at (309) 556-3391.



Contact: Tia Patsavas '16 (309) 556-3181, univcomm@iwu.edu