



Fall 9-3-2013

Most Distinguished, Outstanding and Loyal Alumni to be Honored at Homecoming

Hannah Dhue
Illinois Wesleyan University

Follow this and additional works at: <https://digitalcommons.iwu.edu/news>

Recommended Citation

Dhue, Hannah, "Most Distinguished, Outstanding and Loyal Alumni to be Honored at Homecoming" (2013). *News and Events*. 2104.
<https://digitalcommons.iwu.edu/news/2104>

This Article is protected by copyright and/or related rights. It has been brought to you by Digital Commons @ IWU with permission from the rights-holder(s). You are free to use this material in any way that is permitted by the copyright and related rights legislation that applies to your use. For other uses you need to obtain permission from the rights-holder(s) directly, unless additional rights are indicated by a Creative Commons license in the record and/ or on the work itself. This material has been accepted for inclusion by faculty at Illinois Wesleyan University. For more information, please contact digitalcommons@iwu.edu.

©Copyright is owned by the author of this document.

Most Distinguished, Outstanding and Loyal Alumni to be Honored at Homecoming

Sept. 3, 2013

BLOOMINGTON, Ill.— Illinois Wesleyan University will honor the 2013 recipients of its annual alumni awards at the Alumni Awards Lunch at 11:30 a.m. on Saturday, October 12 at the Shirk Center Performance Gym (309 Emerson St., Bloomington). The program will feature a live performance from IWU's co-ed a capella group, *Silence Interrupted*. Bob Page, Class of 1979, will receive the Distinguished Alumni Award, Chad Maxwell, Class of 2002, the Robert M. Montgomery Outstanding Young Alumnus Award and Alice (Fairchild) Heath, Class of 1952, the Loyalty Award.

Illinois Wesleyan presents the Distinguished Alumni Award to an alumnus/a who has made a distinguished contribution to society, has achieved professional distinction or has demonstrated civic leadership. From his rise to administration in 2007, president and chief executive officer of the University of Kansas Hospital, Page has played an integral role in gaining the facility Magnet recognition. Under his leadership, the hospital has been named to *U.S. News & World Report's* Best Hospitals list for the past seven years. It ranks number three in quality and accountability among academic medical centers by the University Health System Consortium and 10 of its specialties ranked among the nation's top 50.

Page used his accounting degree from IWU to become a certified public accountant for Pricewaterhouse (now PricewaterhouseCoopers). From public accounting, Page moved into internal auditing for Jewish Hospital in St. Louis, Mo., and Page has remained the health care field ever since.

In gratitude to his mother for supporting his studies at Illinois Wesleyan, Page has recently endowed a scholarship in accounting.

As part of the Homecoming festivities, he will teach a Back to College class titled, "How to Transform an Under Performing Culture" on Friday, October 11 at 4 p.m. on the lower level of The Ames Library in Beckman Auditorium (1 Ames Plaza, Bloomington).

The Robert M. Montgomery Outstanding Alumnus Award is named for 1968 alumnus and former IWU alumni director in recognition of alumni who display outstanding professional achievement within 15 years of their graduation. After 11 years, Maxwell earned the title of Starcom's senior vice president of the Integrated Insights, Human Experience Intelligence Group. At Starcom, an agency that develops communication strategies Maxwell and his team develop research strategies to understand changing consumer behavior and attitudes.

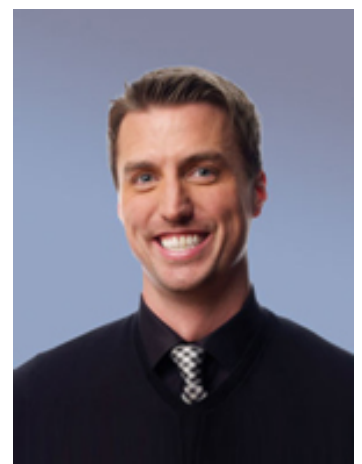
Prior to Starcom, Maxwell led Razorfish's Research practice, a digital design and marketing consultancy. During his tenure, he directed user research where he increased research revenue over 500 percent. Before Razorfish, he led Q-Squared Research, a boutique ethnographic consultancy practice.

While at IWU, Maxwell studied Spanish and cultural anthropology and was initiated

Bob Page



Chad Maxwell



into the national collegiate Hispanic honor society, Sigma Delta Pi in 2001. His writing appeared in IWU's *"Undergrad Review Journal,"* and he performed in the Illinois Wesleyan Wind Ensemble and Civic Orchestra. Maxwell, who earned a master's degree in applied anthropology from the University of Florida, continues to devote himself to encouraging other IWU students through his involvement with the Hart Career Center and the anthropology department.

Maxwell will also teach a Back to College course "Ones and Zeros Cultural Considerations in the Era of Big Data and Analytics" on Friday, October 11 at 2 p.m. in Beckman Auditorium. On the closing day of Homecoming, Sunday, October 13 he will give a lecture titled "Curing 'less than': Sharing Your Authentic Self in Micromoments to Create Change" at the Pride Alumni Communications (PAC) brunch held in the Memorial Center Turfler Room at 11 a.m. (104 E. University Ave., Bloomington).

The Loyalty Award is reserved for alumni and friends who have benefited IWU through their service to the University or strong financial support. Heath is deeply devoted to community involvement and has been a consistent donor to the Wesleyan Fund for over 15 consecutive years. As a chair of her 60th class reunion, last year she reached out to every member of her class to encourage them to attend Homecoming and acted as mistress of ceremonies for the Golden Titans Reunion Dinner.

Attending Illinois Wesleyan has been a Fairchild family tradition for generations. Heath joined three of her uncles, her mother and her sister as part of IWU where she studied sociology and psychology. While attending the University, she met her late husband, Bob Heath, Class of 1949. Like 13 of her relatives, Heath was an active member of IWU's chapter of the social sorority, Kappa Kappa Gamma (KKG). She served as president of the Rockford KKG Alumni Chapter for two years.

Alice (Fairchild) Heath



Heath received certification as volunteer administrator through the National Association of Volunteer Administrators, and served on the Steering Committee for Rock Valley College Curriculum Development Human Services Department. In addition, she is past president of the Northern Illinois Southern Wisconsin Association of Volunteer Administrators and she was named Volunteer Coordinator of the year by Northern Illinois Southern Wisconsin Association of Volunteer Coordinators.

She was president of the Rockford Chapter Lyric Opera Chicago and is the deputy voter registrar for the League of Women Voters and president of the Winnebago/Boone Counties Genealogical Society. Heath received the ATHENA Award in 1994 and was honored as Senior Citizen of the Year by the Rockford Area Council on Aging. She continually promotes Illinois Wesleyan to young people she encounters through her numerous volunteer activities.

For more information on the award winners or Homecoming events, link to the Homecoming webpage at <http://www.titanpride.org/homecoming13>. For certain events, toll-free reservations are accepted at 1-888-498-2586.

Contact: Hannah Dhue '15 (309) 556-3181, univcomm@iwu.edu