



Spring 4-26-2006

IWU Galleries to Host Ceramic, Painting, Photography Exhibits

Rebecca Welzenbach
Illinois Wesleyan University

Follow this and additional works at: <https://digitalcommons.iwu.edu/news>

Recommended Citation

Welzenbach, Rebecca, "IWU Galleries to Host Ceramic, Painting, Photography Exhibits" (2006). *News and Events*. 3447.
<https://digitalcommons.iwu.edu/news/3447>

This Article is protected by copyright and/or related rights. It has been brought to you by Digital Commons @ IWU with permission from the rights-holder(s). You are free to use this material in any way that is permitted by the copyright and related rights legislation that applies to your use. For other uses you need to obtain permission from the rights-holder(s) directly, unless additional rights are indicated by a Creative Commons license in the record and/ or on the work itself. This material has been accepted for inclusion by faculty at Illinois Wesleyan University. For more information, please contact digitalcommons@iwu.edu.

©Copyright is owned by the author of this document.

IWU Galleries to Host Ceramic, Painting, Photography Exhibits

April 26, 2006

BLOOMINGTON, Ill. - The Illinois Wesleyan University School of Art's Merwin and Wakeley galleries will present *Twenty Dirty Hands: Recent work by a cooperative of ceramic artists who live in and around Galena, Illinois, and Place as Transition*, a combination exhibit of large photographs and small paintings by John Faier and Lynn Webster. The galleries are located in the Joyce Eichhorn Ames School of Art (6 Ames Plaza West, Bloomington).

The exhibitions, which are free and open to the public, begin Wednesday, May 3 and continue until Sunday, May 21. Gallery hours are as follows: Monday - Friday 12-4 p.m., Tuesday evening 7-9 p.m., Saturday and Sunday 1-4 p.m.

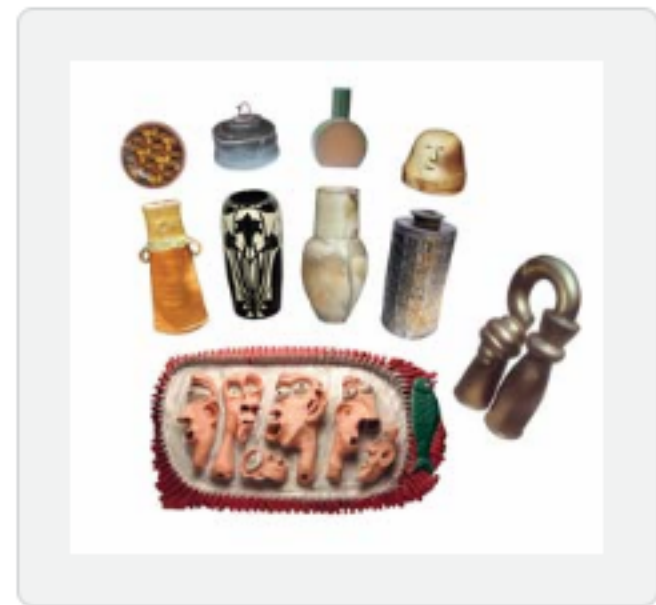
A group discussion involving all featured artists will take place at 2 p.m. on Sunday, May 21, in the galleries, followed immediately by a reception at 3 p.m.

On display in the Merwin Gallery will be *Twenty Dirty Hands: Recent work by a cooperative of ceramic artists who live in and around Galena, Illinois*, which will highlight a diverse range of techniques, materials and processes in ceramic works from functional pottery to sculpture. The featured artists, Ken Bichell, Paul Eshelman, Chales Fach, Bill Farrell, Delores Fortuna, Ron Hahlen, Kent Henderson, Stephanie O'Shaughnessy, Doug Reynolds and Adrienne Seagraves, are bound together by a love of small-town life. Every October in Galena, the group hosts an annual event with studio tours, special kiln firings and demonstrations.

The Wakeley Gallery will showcase *Place as Transition*, an exhibition displaying the large photographs of John Faier and the small paintings of Lynn Webster. The two artists met at Northwestern University's Department of Fine Arts in 1978 and have held a continued dialogue about their work ever since. Faier's photography uses techno colors and contrasts to create a transformed representation of natural environments.

Webster's paintings are framed or rearranged by borders and inspired by her study of Native American art.

For additional information, contact Jennifer Lapham, director of the Merwin and Wakeley galleries, at (309) 556-3391.



Contact: Rebecca Welzenbach, (309) 556-3181