



Fall 9-27-2007

## Merwin and Wakeley Galleries To Host Faculty Biennial

Sehaj Sethi  
*Illinois Wesleyan University*

Follow this and additional works at: <https://digitalcommons.iwu.edu/news>

---

### **Recommended Citation**

Sethi, Sehaj, "Merwin and Wakeley Galleries To Host Faculty Biennial" (2007). *News and Events*. 3063.

<https://digitalcommons.iwu.edu/news/3063>

This Article is protected by copyright and/or related rights. It has been brought to you by Digital Commons @ IWU with permission from the rights-holder(s). You are free to use this material in any way that is permitted by the copyright and related rights legislation that applies to your use. For other uses you need to obtain permission from the rights-holder(s) directly, unless additional rights are indicated by a Creative Commons license in the record and/ or on the work itself. This material has been accepted for inclusion by faculty at Illinois Wesleyan University. For more information, please contact [digitalcommons@iwu.edu](mailto:digitalcommons@iwu.edu).

©Copyright is owned by the author of this document.

Merwin and Wakeley Galleries To Host Faculty Biennial

September 27, 2007

BLOOMINGTON, Ill. – Illinois Wesleyan’s Merwin and Wakeley Galleries will host the Faculty Biennial Exhibition, showcasing work by faculty of the IWU School of Art. The exhibition will be held from Oct. 9 to Nov. 8, and will open with a reception on Tuesday, Oct. 9 from 4 to 6 p.m. in the galleries (6 Ames Plaza West, Bloomington).

The exhibition is free and open to the public. [See more examples.](#)

Gallery hours are 12 to 4 p.m. Monday through Friday and Tuesday evenings from 7 to 9 p.m. Saturday and Sunday hours are 1 to 4 p.m. There will be extended hours for Homecoming weekend, Oct. 20 and Oct. 21, from 11 a.m. to 5 p.m.

Faculty exhibitors are: Miles Blair, director of the School of Art; Carmen Lozar, director of the Merwin and Wakeley Galleries; Timothy Garvey, professor of art history; professors of art Constance Estep, Marie-Susanne Langille, Sherrilyn McElroy, Therese O’Halloran, and Kevin Strandberg. The mediums of work on display will range from photography to flame-worked glass to woodcarving.

The collection will demonstrate the various interests of the faculty. Estep describes her monoprints as a reflection on the dynamism and complexity of familial relationships, “Like collage, with one layer of truth on top of another, it becomes difficult to decipher what the real truth of the matter really is, or how many truths exist within a given situation.”

Strandberg feels his work with glass sculpture speaks of his youth during the Cold War. He highlights elements of culture that affected him as a youngster such as arcade games and cars.

McElroy’s digital prints are her personal accounts with nature, “The experience of planting, tending, burning, and living with a prairie influences my work,” she said.

For additional information contact Carmen Lozar, director of the Merwin and Wakeley Galleries, at (309) 556-3391, or visit the Merwin and Wakeley Galleries Web site at <https://www.iwu.edu/art/galleries/>.

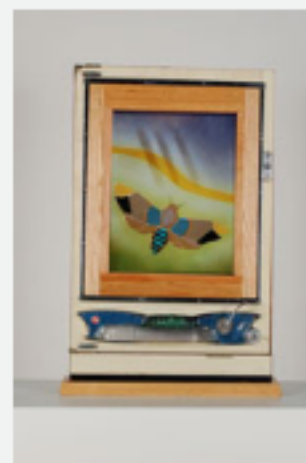
Contact: *Sehaj Sethi, (309) 556-3181*



Carmen Lozar  
*Crocodile Tears*



Constance Estep  
*Behind the Hedges*



Kevin Strandberg  
*Unsafe – A Hobo’s Warning*